

## Purpose

To establish a strategic framework for the regeneration of the Chesterfield Canal between Chesterfield and Kiveton Park.

## Vision

*Chesterfield Canal corridor will be reclaimed as a place for the local community to live, enjoy, and be employed; for tourists and visitors to come, play and stay; for new and existing businesses to grow and prosper; and for nature and biodiversity to thrive.*

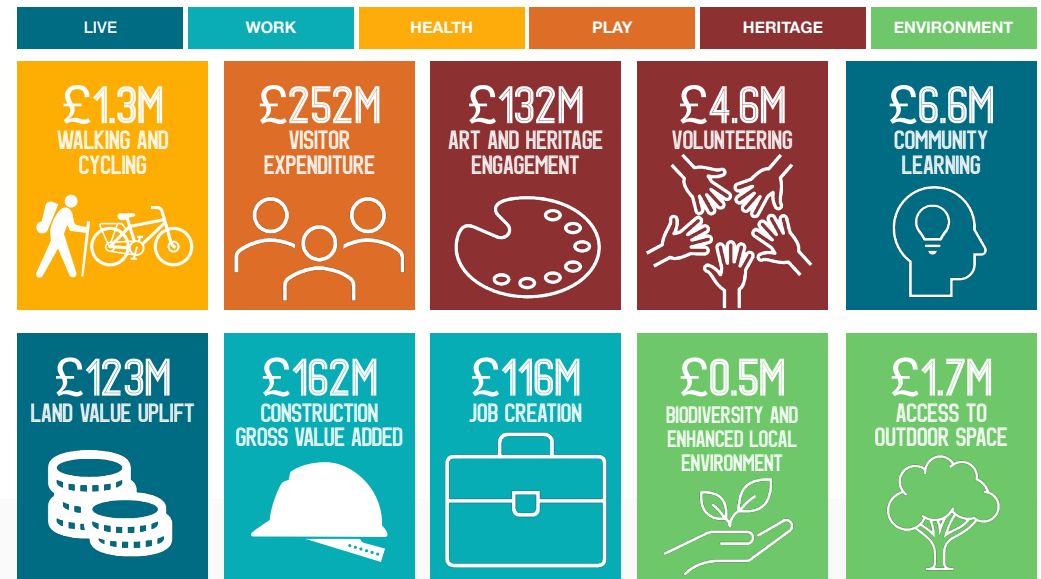
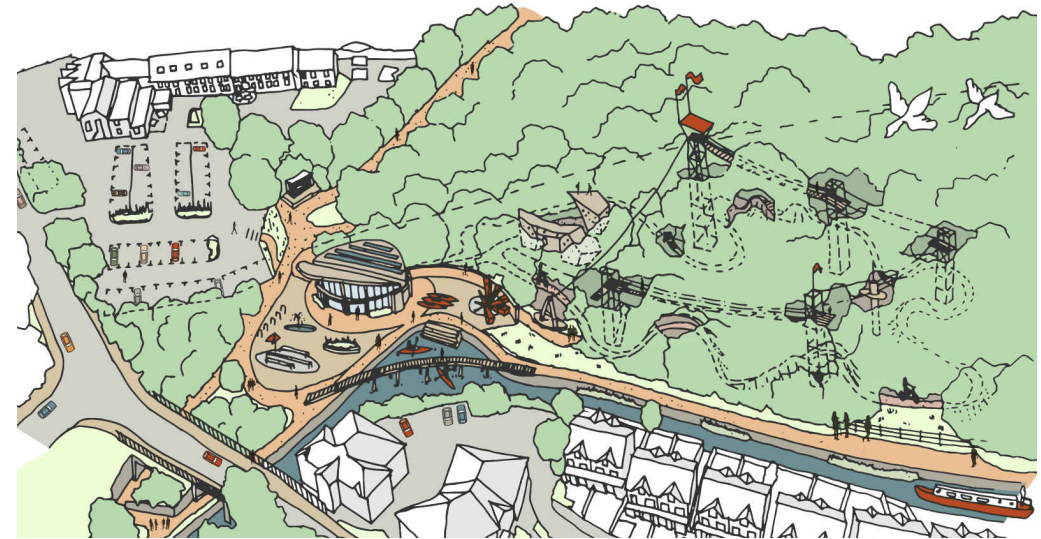
## Process

The Strategic Outline Case has been developed for the whole corridor between Chesterfield and Kiveton Park, focusing on the strategic fit and case for change. This has been done through stakeholder consultation, data analysis, strategy and policy review, comparator analysis and site analysis.

An Outline Business Case develops more detailed site proposals within the North East Derbyshire local authority area.

## Drivers for Change

A detailed analysis of local policy and socio-economic data and consultation with stakeholders has identified six key drivers for change for the Chesterfield Canal Corridor Project: Live, Work, Health, Play, Heritage and Environment.



<https://chesterfield-canal-partnership.co.uk/restoration/masterplan/>

