

# Clarborough & Welham

## Newsletter Summer 2019

### Neighbourhood Plan Challenges

How do Government  
plans affecting our  
Plan? Pages 12-13

### Head Teacher appointed at Clarborough Primary School.

Page 8



## In this issue:

### Forthcoming Events

Bassetlaw Museum at Christmas	20
Bassetlaw Youth Council meeting dates	24
Clarborough Festival	3
Retford Library Family & Local History	24
Retford 'Square' Events	23
Dates for your diary	23

### Local Groups

British Naturalist Association	3
Clarborough & Welham IT Group	6
Clarborough & District W.I.	20
The Bells! The bells! Clarborough church	23

### History

Clarborough Parish used to be bigger	16
Pilgrim Roots – are they deep enough?	16
Queen Victoria's 200 <sup>th</sup> birthday	7
Why do Financial Years start in April?	15

### Online

Open source software	4
----------------------	---

### News

Aurora Centre: Be Cancer Safe	19
Bassetlaw District Council's draft Strategic Plan and potential effects	12
Bassetlaw Action Centre's Stroke/Neuro Centre Service	4
Bassetlaw Museum's Spring events	22
Broad Gores Housing development news	12
Bassetlaw District Councillor Kath Sutton	15
BCH's Fourth Religious Tolerance Forum	10
Cancer Research UK needs volunteers	6
Clarborough & District W.I.	20
Clarborough & Welham Allotment Association Spring update.	11
Clarborough Primary School news	8
Going Green in 2019 – thoughts from John Mann MP	22
Letter to the Editor – local speeding	22
Notts. County Councillor Tracey Taylor	24
Parish Pasture update	12
Retford Business Forum donates to Bassetlaw Hospice	9
Working Win trials	23
Worksop Priory Tours	18

### Law & Order

Latest from Paddy Tipping & Dave Airey	18
--	----

Editor: Greg Herdman (01777) 700 918  
clarboroughwelham@gmail.com

Advertising: Val Waring (0177) 708 181



Produced by Clarborough & Welham IT Group with generous support from Clarborough & Welham Parish Council and distributed by our tireless team of volunteers.

Material published in this Newsletter does not necessarily represent opinions of the Editors. Material submitted without full contact details will not be published. All publication decisions remain the responsibility of the Editor alone.

Contents subject to Copyright © 2019

## From the Editor

Here we are, another packed issue with, hopefully, summer days about to begin!

This issue once again shows that we have lots to look forward to in our local scene, whether it is our own Clarborough Festival, weekly events at Clarborough Village Hall, church and W.I. programmes or those in our Primary School.

Retford is also inaugurating a programme of 'On the Square' events on Sundays through the coming months. These are being co-ordinated by Retford Business Forum and are designed to provide entertainment in the town square to pull people into Retford – see **Dates for your Diary** below.

Retford Hub also has a range of events planned along with more on an exciting music event by *Sons of Pitches* (see page 20). Don't forget Bassetlaw Museum (page 22) or *Barnum* at the Majestic (page 7) as well. Want to get away for a while? See Bassetlaw Action Centre's minibus trips (page 19) – also suitable for those with mobility issues.

Hard up against my editorial deadline came a most disturbing letter (see page 22) which I have to say did not come as a surprise. With a number of very young families as neighbours I am constantly worried by the reckless speed that one or two 'locals' use to drive round blind bends – a child on a bike in the road, or an older person using a mobility device would have little chance if met by someone late for work – or even on their phone!

The letter referred to above also raises the issue of on-street parking and it might be appropriate to remind readers of an article that we published some years ago which pointed out that cars parked in such a way as to prevent access by emergency vehicles would be deemed in breach of road traffic regulations and, in extreme case, would be moved by force. In that case, damage would be most unlikely to be covered by vehicle insurance!

Regular readers will have notice that pressure on space has meant departure of previously regular pages including *Local Contacts* and *Village Hall weekly bookings*. Both of these are still available on our community website (see foot of front page). For weekly Village Hall bookings, go to **Local Groups ► CDCA – Village Hall** where you will find a link to the weekly programme to the right of the hall photo. The full page of **Local Contacts** is to be found as a sub-page of **Finding us** from our site's home page menu.

While we are talking about community website – if you simply type *clarborough* into a Google search our site usually comes up in the top two or three 'hits'. Our homepage then gives an easy local weather report – just click on the sun! This is usually your editor's first online check to start the day.

### Dates for your Diary

28<sup>th</sup> April: Retford St.George's Celebrations  
6<sup>th</sup> May: Retford Charter Day  
19<sup>th</sup> May: Clarborough Festival  
26<sup>th</sup> May: Retford "Square Fete"  
6<sup>th</sup> June: *Sons of Pitches* at St.Swithun's  
30<sup>th</sup> June: Retford "Square Wheels"  
28<sup>th</sup> July: Retford "Square Deal"



### Clarborough Festival

Our Festival will soon be here – put Sunday 19<sup>th</sup> May into your diaries!

Regulars will know that Clarborough's Festival is one of the biggest events in this part of the world with events and displays to grip the whole family. This opens at 10:00 with a huge range of attractions both inside Clarborough Village Hall and also outside on the Hall field.

Current planning for our 2019 Festival includes:

- A wide range of stalls selling cakes and sweets as well as other artisan products.
- Barbecue with a range of burgers and other products.
- Indoor refreshments care of St. John the Baptist church.
- Local school and dance group displays.
- Annual Dog Show.
- Beer tent.
- Classic Cars show including Jaguar Car Club.
- Drop-in by local Fire Service with their engine!



Add to these a range of children's attractions, ice creams, etc. plus raffles and, of course, the concluding stage of Clarborough's Scarecrow Competition...



Entry is free, so come and have a great afternoon.

### The British Naturalists' Association



(Retford Group) in association with the Canal and River Trust and the Nottinghamshire Wildlife Trust

With spring and summer coming on, we can look forward to our canal and riverside walks being enhanced by the sight of various butterflies and birds. So far only Brimstone butterflies and Speckled Wood have come out, with a few overwintering Peacocks and Tortoiseshells. With our rich array of summer butterflies we have much to look forward to.

In February, we were visited by Steven Rutherford, the BNAs new national Chairman who also runs our South Yorkshire Branch, and Catlin Hayman, Ecologist for the Canal and River Trust. This was their first visit to our canal side base at Drakeholes.

Otters (*lutra lutra*) we found a few tracks off this quite illusive mammal on the mud-banks by the River Trent. If you walk by the Trent at low tide keep an eye open for any traces of these animals, but take care not to get bogged down in the mud. If you can, take a camera with you, because only recorded details can go on the national records. A lot of confusion takes place between the otter and the American mink, but the prints of mink are much smaller.

We start moth trapping at dusk on the first Thursday of April at Drakeholes, and monthly thereafter. Why not pop along and watch us at work.

Small Mammal trapping will be starting in April at the Idle Valley Reserve, and other Wildlife Reserves in this locality. Dates are fixed as we go along due to weather conditions.

Bat detecting will be carried out throughout the Spring and Summer months normally on reserves or by the canal side.

If you are interested in what we are doing please contact me, or come along to any of our meetings. Please record what you see and where, if possible with a grid reference.

Telephone: 01777 948 369

E Mail: [drrobert.tansey@talktalk.net](mailto:drrobert.tansey@talktalk.net)

**Dr Robert Tansey F.L.S., M.B.N.A.**

### Latest FTTP for Welham

Better Broadband for Nottinghamshire's notice for properties in Welham is now available. Fttp – Fibre to the premises. See your community website's **ICT Site** page for this and Clarborough generally.

**Editor**



## Open source software – Free?

*Source* in the above title refers to the underlying computer code that drives computer applications – its *source code*. In the early days of computing, programmers shared such code to help learning and development but, as commercialisation developed through the 1970s and 1980s, this was replaced by commercial secrecy and copyright protection. This regime will be familiar to many; copyright warnings on packaging and screens warning that copying or distributing commercial applications such as Microsoft Office or Adobe Photoshop will be subject to legal proceedings.

If we wind back to the early days of computing and the free sharing of code and ideas, we have the origins of open-source – a concept now more widespread from engineering to pharmaceuticals. In terms of computer software the concept now sports a multitude of applications which are all freely available for download from the internet under a number of licences. Although these vary



somewhat, generally they allow or even encourage users to share (copy) applications, modify them, re-distribute modifications etc. A common feature of these licences is that they prohibit adaptations or developments from being distributed under a different licence – so developers can't use open source code to create commercial products!

So, what's in it for me? Well, let's start with a quick look at the applications currently in use by our own local **Clarborough & Welham IT Group**. We will start with a pair of very closely related office applications, **Apache Open Office** and **Document Foundation's Libre Office**. The Newsletter you are now holding was created using Apache Open Office.

Both of these applications ('Apps') have much the same contents as Microsoft's Office – i.e. word processor, spreadsheet, presentation, database and can read and write Microsoft format files. The major difference between them is that Libre Office has greater 'comfort' with the latest Microsoft Office file formats (such as .docx, xlsx etc). Thus either open source package can create, for instance, a Microsoft Word document for attachment to e-mails to ensure the widest possible end-user access.

Office applications are, however, just the beginning. Image editing is another hugely important area – whether for your holidays photos or for commercial advertising. Here the undoubted front runner for open source apps is **Gimp**. By the time you read this the first short course on use of Gimp by our IT Group will have finished. Watch this space for forthcoming opportunities!

Our previous issue had a brief introduction to colourising monochrome images – a topic made famous by the recently coloured World War 1 video but that just scratched the surface of what can be achieved using Gimp.

Many users will be familiar with Mozilla's Firefox web browser – yet another open source app but have you met **Audacity**, a remarkably powerful sound editing and recording app or **VideoLan's VLC** Media player – another powerful tool?

Download sites – versions for Windows, Mac and Linux are all available:

**Open Office:** <https://www.openoffice.org/download/>

**Libre Office:**

<https://www.libreoffice.org/download/download/>

**Gimp:** [www.gimp.org](http://www.gimp.org)

**Audacity:** <https://www.audacityteam.org/download/>

**Firefox:** <https://www.mozilla.org/en-GB/firefox/new/>

If you'd like to get your hands on any of these apps in a friendly, supportive, environment then get it touch with Clarborough & Welham IT Group. You can bring your own laptop or use one of the Group's Windows 10 machines. Contact: (01777) 700 918 or [clarboroughwelham@gmail.com](mailto:clarboroughwelham@gmail.com)

Editor



## Bassetlaw Action Centre's Stroke/Neuro Information Service...

...is available to provide advice, information and support to stroke

survivors, people with a neurological condition, their families and carers for as long as it is needed.

See your community website's **Health & Welfare** page or Bassetlaw Action Centre's contact details at the bottom of their page 19 *Minibus Trips* article, or e-mail Jane Bullock on: [jbullock@bassetlawactioncentre.org.uk](mailto:jbullock@bassetlawactioncentre.org.uk)

# USED:

**Furniture  
White Goods  
Nik-Naks  
Bits & Bobs**

**Now incorporating  
WeLoveltShop, home of  
Shabby Chic & Upcycling**

**FULL & PART**

**HOUSE CLEARANCES**

**TEL 01777 702779**

**OR TXT: 0755 000 2242**

**South Street Business Centre, Beehive Street  
Retford, DN22 6JE**



# SIGNAL ELECTRONIC SERVICES

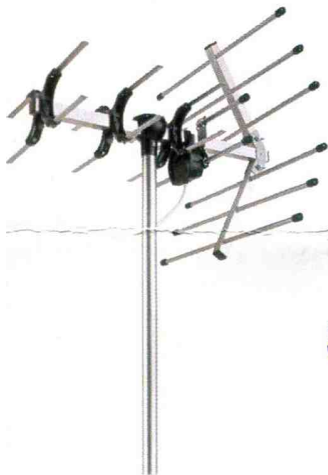


Make sure you're ready for 2011



sky+ skyHD

All Sky Services Supplied and Installed



Satellite and Aerial Installations  
Digital Switchover services -  
Free Quotes for all Aerial Upgrades

*Closed Circuit TV  
Installed and Serviced*

Full Plasma Installations -  
Sets mounted on walls/brackets etc.

*Cameras and Lighting*

Telephone Points and Extensions

*Specialist in Multi-point Systems*

All Work Guaranteed 1 Year



*Domestic, Commercial, Contract & Insurance Work*

Free Site Survey, Free Digital Meter Test, Free Call Out, Free Advice  
If you would be happy with this level of service *Reward Us With The Job!*

**Contact Philip Stringer (Proprietor) at the Signal Office on:  
(01777) 870 665 or 07889 833 410**

*Over 25 Years Experience in the Electronics & TV Industry*



## Clarborough & Welham IT Group

Your community IT Group has been providing classes covering a wide range of skills and applications for well over 10 years. However, traditionally these have taken place during daytime slots – currently either Tuesday afternoons (13:30-15:00) or Wednesday mornings (10:00-11:30). This has meant that membership is essentially restricted to retired individuals although occasionally we have hosted people seeking back-to-work skills or experience.

We are currently exploring the possibility of running a Tuesday evening class in Clarborough Village Hall from mid-September, 2019. Current timing is envisaged at 19:00-20:30 although this would depend on demand.

The thinking behind this move is to offer topics that are more appropriate to those in employment with work around basic accounting in spreadsheets coming high on the list. Having said that, image editing as it might interest commercial photographers as well as poster productions might also be of interests. Add to that some of the more sophisticated tools for online searching as well as commercial use of e-mail systems.

Finally, we also have experience in development of websites – take a look at our IT Group website ([www.cwitgroup.btck.co.uk](http://www.cwitgroup.btck.co.uk)) which is produced using BT's Community Kit. This is dedicated to the voluntary and not-for-profit sectors for which it is completely free. On the other hand, the commercial package that is used by our IT Group to manage Clarborough & Welham's

community website ([www.clarborough-welham.org.uk](http://www.clarborough-welham.org.uk)) provides an example of a fully commercial application using separate server, domain name registration and website creation tools.

If you are interested in possible membership of this Tuesday evening development, please do get in touch since we would need a group of at least 6 to make it viable in September.

**Clarborough & Welham IT Group also has a number of Windows 10 laptops for disposal.** All bar one\* of these have integral CD/DVD drives and have received regular Windows 10 updates. All come with a range of open source applications that include Apache Open Office, Gimp image editor as well as Firefox web browser and Cleaner. Other open source applications described in our page 4 article can be installed free of charge if requested. These are currently priced at just £100 to a good home (\*one that lacks a CD/DVD drive is available at just £75). Interested? Contact Greg on (01777) 700 918 or e-mail: [clarboroughwelham@gmail.com](mailto:clarboroughwelham@gmail.com)

Greg Herdman



CANCER  
RESEARCH  
UK

**Retford's  
shop needs  
more  
volunteers**

Contact (01777) 860 904 or drop in for a chat at :  
25, Carolgate, Retford DN22 6BZ

## The Kings Arms Clarborough

*Bingo every Monday from 19:00*

*Quiz Night every Wednesday from 20:00-22:00*  
with regular Raffle

**Regular special events too – drop-in to find out more!**

*Good food, good drinks and good company  
come and find out more!*

**We have ample car parking too!**



We are a traditional village pub located on Main Street just a short walk from the Chesterfield Canal with ample parking. We have an open fire, traditional pub games and cask ales (changed regularly) as well as lagers, wines plus hot and cold drinks. Food is served Tuesdays to Saturdays 12:00 - 20:00 plus Sunday lunch 12:00 - 16:00



The Kings Arms, Main Street, Clarborough, Retford DN22 9LN  
(01777) 708 845 or [mzawarta@hotmail.co.uk](mailto:mzawarta@hotmail.co.uk)



**The Kings Arms Clarborough**



## 200<sup>th</sup> Anniversary of Queen Victoria's birth

Did you know that Queen Victoria was named *Alexandrina* Victoria in Kensington Palace when born on 24<sup>th</sup> May, 1819. She was daughter of Prince Edward, Duke of Kent and Strathearn, the fourth son of King George III. Although from the 'royal' family, until her late teens she would not have expected to rise to the monarchy even though both the king and her father had died in 1820. She inherited the throne in 1837 at the age of 18 after her father's three elder brothers had all died, leaving no surviving legitimate children.

Victoria's childhood was extremely controlled by her mother after her father died in 1820. She was just 18 when King William IV died at the age of 71 on 20<sup>th</sup> June, 1837. Her coronation followed on 28<sup>th</sup> June, 1838 at Westminster Abbey after which she became the first sovereign to occupy Buckingham Palace.

[Below] Coronation portrait



Because she was a single woman, social convention required her to live with her mother, something that Victoria detested; she consigned her mother to a remote apartment in Buckingham palace and refused to see her. However, over a number of years she had become friendly with Prince Albert of Saxe-Coburg and Gotha which led to her proposing marriage (as sovereign she was allowed to!) to Albert on 15<sup>th</sup> October, 1839. They were married on 10<sup>th</sup> February, 1840. Albert immediately became Victoria's primary adviser.

Interestingly, in the light of future examples (and particularly the assassination of Archduke Franz Ferdinand of Austria-Hungary in 1914 that precipitated World War 1) Victoria was the target for a number of attempted street pistol

assassinations between 1840-1850.

The Victorian era was to become the UK's greatest period with rapid industrialisation leading to world economic dominance coupled with expansion of the British Empire.

Editor

## Don't Miss Out On 'THE Greatest Show On Earth'

Tickets are available via the Majestic Box Office or on the website for the Retford Operatic Society's next production 'Barnum' from 9<sup>th</sup> to 11<sup>th</sup> May. Visit [www.majesticretford.org](http://www.majesticretford.org) or call 01777 706 866

This exhilarating musical follows the irrepressible imagination and dreams of Phineas T Barnum, America's Greatest Showman. The story of his life and his marriage to Chairsty, reveals a couple who looked at the world from opposite sides of the spectrum, and also reveals that she was the practical one, who made his dreams come true.

We follow the legendary showman's life as he lit up the world with the colour, warmth and excitement of his imagination and finally teamed up with J A Bailey to create 'Barnum and Bailey's Circus – the Greatest Show on Earth'.

Cy Coleman's wonderfully exuberant score includes the hits 'Come Follow the Band', 'The Colours of My Life' and 'There's a Sucker Born Ev'ry Minute'.

**Don't delay, book your tickets today!**

A vibrant, colorful poster for the musical 'Barnum'. The title 'BARNUM' is written in large, bold, yellow letters with a red outline, set against a blue background with white stars. Below the title, it says 'The Musical' in a smaller font. The dates '9th - 11th May 2019' are prominently displayed in yellow. At the bottom, it says 'THE MAJESTIC THEATRE'. The poster features illustrations of a clown, a circus tent, and a lion. Text at the top reads 'COME FOLLOW THE BAND TO THE GREATEST SHOW ON EARTH!'. Credits for the music, lyrics, and book are listed. A logo for the Retford Amateur Operatic Society (RAOS) is in the bottom right corner. The box office information is at the very bottom.





## Head teacher appointment

We are so thrilled to be able to announce that Mrs Cowell-Clark has now been appointed our

permanent Head Teacher.

As you know, Mrs Cowell-Clark has been our Acting Head Teacher for seventeen months now, but after 2 days of rigorous interviews and tasks, on 4<sup>th</sup> April Governors selected Mrs Cowell-Clark from a very competitive group of candidates to continue as permanent Head Teacher. Both staff and children alike are so happy to have Mrs Cowell-Clark as our Head and know that she will continue her amazing work within our school and community.

## Class 1 and 2 visit to the church

Year 1 and Year 2 had a lovely time at church at the end of March. Reverend Mark Cantrill, Mrs Lesley Keating and two kind ladies called Sandra and Beryl were there to meet us. We learned a song about growing seeds and love in the Spring time. Mark and Lesley told us the Easter Story and the children helped to make an Easter garden. Then we drew round our hands on some felt. Mark gave all the children a palm leaf cross, and Sandra gave out chocolate eggs as well.



## Scholastic Book Fayre

Thank you to everyone who supported our Scholastic Book Fayre. It was great to see so many children so enthusiastic about buying a book. We hope the children have enjoyed reading them. We raised £372.54 (50% of the takings) for school and will be using it to buy new books for our library.



**Donny Dog and Sean from Doncaster Rovers** recently came to do an assembly about the importance of good attendance. If your child has achieved 98% or more this term, they have been given a leaflet which entitles them to a free ticket to watch Doncaster Rovers V Plymouth Argyle on Saturday 13<sup>th</sup> April. It also entitles a parent to attend for the reduced price of £15 and siblings for only £2.

The children also got the opportunity to challenge Donny Dog to some football skills. Both Saffron and Joseph were triumphant in beating Donny Dog, well done children!

## Swimathon

Some of our Key Stage 2 pupils took part in the Retford Rotary Club's Annual Swimathon on 9<sup>th</sup> March. We had 2 teams of children (and Mr Byrom!) who each had 13 minutes to swim as many lengths as they could. Children were asked to get sponsors for either a fixed amount or an amount per length. All of the children swam brilliantly and showed such perseverance and resilience. We are so proud of them all.

The children raised a grand total of £1060, winning the trophy for Junior Team most sponsorship raised. The Rotary Club take a percentage and we donate the remainder to a charity of our choice. Our chosen charity this year was The Sheffield Children's Hospital and we

have been able to send them £637.60.

We are so very proud of Evan Q-B in Year 6 who recently competed in the British Gymnastics Championships in Liverpool, in the Under 12's section. Evan came 10<sup>th</sup> out of 74! He took part in floor, pommel horse, rings, vault, parallel bars and high bar and we were lucky enough in school to watch him live. Evan performed amazingly and the children loved watching him and cheering him on. Awesome work Evan!

**And last, but not least, World Book day on 7<sup>th</sup> March yielded** the staff having great fun dressing up as Dalmatians to Mrs Cowell-Clark's Cruella De Vill!



## Comic relief

A big thank you to everyone that donated for Comic Relief. We raised a grand total of £123 to be sent to the charity.



## LAWNMOWERS Tony Halford



**Plant & Grass  
Machinery  
Specialist**

36 Albert Road, Retford, Notts. DN22 6JB

**Tel: (01777) 860 704  
Mob: 07976 941 407**



## J & J Electrical



For all your Electrical needs

Repairs - Alterations - Additions - Installations  
Inspection and Testing  
Domestic and Commercial  
Anti-condensation systems

No job too small

Email: [ij.james558@hotmail.com](mailto:ij.james558@hotmail.com)

Telephone : 07771 163778



## Retford Business Forum donates £350 to Bassetlaw Hospice

Retford Business Forum (RBF) has again agreed to donate the funds raised from the fair at the Retford Christmas Market in 2018 to Bassetlaw Hospice.

On 7<sup>th</sup> March 2019, Bassetlaw Hospice Community Fund Raising Co-ordinator, Debbie Rawlings, accepted a cheque for £350 from Rick Brand, Chair of Retford Business Forum, outside the Hospice Shop on Retford's Market



Square.

Debbie Rawlings said: "It is great news that Retford Business Forum is continuing to support Bassetlaw Hospice. The Hospice serves everyone in Bassetlaw and we look forward to working closely with Retford Business Forum in the future."

Rick Brand said "Retford Business Forum will soon be announcing some exciting plans for 'Sundays in the Square' in Retford. One of the events being planned is "Square Deal" day on Sunday 28<sup>th</sup> July 2019, with charities and not-for-profit organisations having the opportunity to raise funds and provide entertainment. We will be working with Bassetlaw Hospice to help to make this a really successful event for these organisations." Other events in this series from RBF, supported by North Notts BID and Bassetlaw District Council, are "Square Fete" on Sunday 26<sup>th</sup> May, and "Square Wheels" on Sunday 30<sup>th</sup> June 2019.

Retford Business Forum's Members include a wide variety of businesses, not-for-profit, community and charitable organisations, and individuals who freely give their time to help Retford and its surrounding villages prosper, and continue to be a great place to live.

**The Forum is currently looking for a Treasurer, please contact [chair@retfordbusinessforum.org.uk](mailto:chair@retfordbusinessforum.org.uk) for further details.**

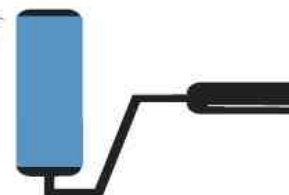
*For further information, please contact Rick Brand at [rickbrand@hotmail.com](mailto:rickbrand@hotmail.com) or 01427 891 376.*

## Recycling at Clarborough School

Did you know that the school collects pens, crisp packets, batteries for recycling? Just taken them to the Office.

# ANDI GRAY

PAINTER & DECORATOR



- INTERIOR & EXTERIOR
- QUALITY PAPER HANGING
- DOMESTIC & COMMERCIAL
- QUICK & QUALITY
- TURNAROUND ON
- RENTAL PROPERTIES

# 07837 370827

[andigraypropertyservices@hotmail.co.uk](mailto:andigraypropertyservices@hotmail.co.uk)

**A LOCAL TRADESMAN ON YOUR DOORSTEP**

*A professional service to a high standard*





## Fourth Retford Religious Tolerance Forum

**"A most thought-provoking and fascinating series of lectures, and we are so glad we came"**

This was just one of the positive comments made about the speakers at the fourth Retford Religious Tolerance Forum held on Saturday 9<sup>th</sup> March 2019.

The event opened with a welcome from **Adrian Gray**, who introduced **Cllr Helen Richards** as the co-ordinator of the day's event.

**Professor Larry Kreitzer** provided new insights into the life of Thomas Helwys (c.1575-c.1616), Nottinghamshire's champion of religious liberty. He discussed whether Helwys died in prison; whether the dates of documents were estimated by Victorian researchers and outlined the Helwys family tree. Larry is from Regent's Park College at the University of Oxford and holds a Research Lectureship within the Faculty of Theology.

**Dr Martin Parsons** outlined the progress of religious liberty in Britain since 1700, including the Test Acts (a series of English penal laws that served as a religious test for public office) and the progress of discrimination against non-conformists and other minorities over time. Martin also gave an insight into the persecution of Christians in other countries and warned against the erosion of liberty. Martin comes from the Barnabas Fund.

**Special Advisor Knox Thames** at the US Department of State in Washington, DC, appeared in a video talking about US efforts to promote religious freedom and interfaith

tolerance. He referred to a common approach to this subject with the U.S. and the UK having similar objectives.

**Cllr Helen Richards** then interviewed **Andrew K of Open Doors** about its work around the world in helping persecuted Christians.

**Dr Calum Miller** addressed the question of whether free speech was really under threat. He gave a reasoned evaluation of the question of whether unpopular views should be heard and whether universities and student unions should act to protect their students from views that may not be generally acceptable. This opened the debate about whether morality is an absolute concept or something that is negotiated within societies and cultures. Calum currently teaches Ethics and Philosophy of Religion at the University of Oxford.

**Adrian Gray** then outlined a potential trail of locations connected with men and women linked to the Lincolnshire and Nottinghamshire area with significant connections to the history of persecution and freedom. Adrian is a local historian and author.

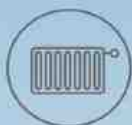
The conclusions of the event could be summarised in the words of George Washington, First President of the United States: "If the freedom of speech is taken away then dumb and silent, we may be led like sheep to the slaughter".

Future BCH Open Network Meetings will be held on  
9<sup>th</sup> May 2019  
18<sup>th</sup> July 2019  
24<sup>th</sup> October 2019

All at 19:45 at the Retford's Grove St Methodist Hall.



*Your local Heating Oil & Oil boiler Servicing supplier*



Heating Oil



Aga Cooker Fuel



K+ Premium  
Heating Oil



Oil Boiler Servicing



Aga Cooker  
Servicing



Fuel Tanks



Oil Boiler Insurance

Contact our friendly team today on Call **01777 279152** or visit **www.rix.co.uk**





## Clarborough & Welham Allotment Association spring update

The allotment is nearing final state, just as we go to press the car park has been surfaced using 60 tons of cleaned road scrapings, we must thank David Hogg for his time and skill with his tractor levelling and rolling it, we couldn't



have done it without him. Watching the site develop is great, and credit is due to the members who have put their time into making this project happen.

Spring has seen a flurry of activity on the plots as people prepare for the new season, with frantic digging and planting taking place as spring suddenly arrives. The site is beautiful at this time of year as hedgerows burst into life and the site is a real bonus to the local bird life with Goldfinches feeding on the Teasels in the wildlife corridor all winter and an occasional visiting barn owl, probably one of the Idle Valley nature reserve birds, Reed buntings have

also been common plus the more usual species. At the time of writing we are looking forward to the imminent arrival of various migrants to complete the picture.

Those who walk across the Parish Pasture project will have noticed the hedge has been laid, this looks drastic but actually is a great way of making a hedge denser and healthier. The main stems are cut partially through and then bent over, this encourages growth from the now upward facing side shoots. This traditional craft was originally developed sometime in the 16<sup>th</sup> century after the enclosure act to help contain livestock, but now is carried out to maintain habitat and improve a hedge aesthetically.

At our last meeting we decided to ban the use of Metaldehyde slug pellets ahead of a government ban next year. Metaldehyde has been linked to poisoning of Hedgehogs and Song Thrushes which are in steep decline, so we continue to do our bit for wildlife, including feeding the local rabbits.

Occupancy levels are good, but with a couple of members too busy to continue there are still a couple of plots available to those who wish to try it, most of the members are new to running an allotment so everyone is welcome and membership includes membership of the allotment association which is a great bonus. If anyone wishes to join us please feel free to contact us using the details on the gate.

The third-rate mind is only happy when it is thinking with the majority. The second-rate mind is only happy when it is thinking with the minority. The first-rate mind is only happy when it is thinking.

*A. A. Milne (1882-1956)*

*English author – Winnie the Pooh.*

## BOOKWORM

**ORDER NEW BOOKS, OLD BOOKS  
DVDS AND CDS**

Free delivery is made by Angela & Paul Meads who ran Bookworm in Retford for over 25 years

All local villages are included in our personal service from Elkesley to Walkeringham, to Rampton, and everywhere inbetween.  
Just phone us on 01777 869 224



Stephen Booth  
will be signing  
his new book in  
Retford Library  
on Thursday,  
15th August at  
11:00.

**YOUR LOCAL  
BOOK  
EXPERTS**  
are only a phone  
call away ...



### Parish Pasture Progress

#### Tree Planting

A further 11 larger trees, including 3 decorative white Birch have been planted. Six Hazel 'whips' have been planted at each end of the footpath, which in time will arch over the footpath. This area is now showing Snowdrops, Primroses, Aconites and Celandines growing through.

Approximately 20 tree whips including Field Maple, Blackthorn, Hazel, Wild Cherry, Hawthorne, Goat Willow and Sycamore have been planted in the rough grass area near the existing Ash tree. This will form a small Wild Woodland with time and will remain in a managed wild state. Old wood piles and long grass will encourage insects and the woodland, with its many tree species, will encourage this too - an oak tree is estimated to act as 'home' for up to 300 insect species. In addition to the insects this will encourage a wide range of both mammal and bird species.

#### Hedge

The length of the old hedge alongside the allotments (80 m) has been professionally laid. This involved partially cutting trunks, bending them down at an angle and then binding them into short vertical posts. This very drastic process encourages the hedge to thicken and grow higher. This in turn produces nesting for a wider variety of bird life. Much of the lower part of the old hedge was too thin for nesting and some species prefer to nest low.

The 'brash' removed was chipped and will be used to renew the surface of the footpath.

#### Public Footpath

Following much correspondence with Via/Nottinghamshire County Council Footpaths Officers a meeting was arranged in Nottingham to discuss financing of a new hard surfaced path - likely to be limestone. Unfortunately the meeting turned out to be fruitless, with Via/County Council informing us that their financial situation will allow only health and safety issues on footpaths to be dealt with for the foreseeable future - stretching into years. The FoPP group has now started looking for grant aided funding.

We know that the current footpath surface, although better than the old muddy footpath, is inadequate for some users in bad weather. We are doing our best to improve it but funding is a very difficult subject in these times of severe cutbacks!

#### Community Orchard

A bid for funding for a Community Orchard has been submitted to the Nottinghamshire County Council Local Improvement Scheme.

**Cllr Paul Willcock**  
**Chairman FoPP Group**

### Broad Gores Housing Development

You will recall that a development of 38 new homes was part of the Neighbourhood Plan and that the Bassetlaw District Council (BDC) land was advertised for sale in February 2017.

The developer which is interested in purchasing the land has submitted a development plan to BDC, specifically for road access.

The Parish Council has responded to this application with a series of detailed comments. As can be seen on the Plan on the facing page, access is proposed along both Smeath Lane and Big Lane. Between the two accesses will be a pedestrianised area centred around the larger existing ash tree.

The accompanying Design Statement detailed the proposals for housing design and style. These showed a variety which, if applied, will produce a good-looking development and be a real asset for the Parish.

*This shows how the Neighbourhood Plan is working for the good of the Parish.*

Further details are available online through the Bassetlaw Planning Portal.

**BDC have yet to decide on the application.**

### Bassetlaw District Council Draft Strategic Plan - effect on our Parish

#### Background

This is the Plan which covers the whole of the Bassetlaw area in a similar way to how our Neighbourhood Plan (NP) covers our Parish. It is superior to all NPs and determines what a NP can contain. The Bassetlaw Plan is scheduled to come into effect in January 2021.

The District Council is required by the government to allocate land for 6,630 houses between 2018 and 2035. Retford, Worksop and Harworth have been allocated 3,853 houses (58%) between them. The 73 larger rural Parishes have been allocated 1777 houses (27%) between them. There are 30 small rural villages (eg Tiln, Little Gringley) which have been allocated no houses. The Plan proposes 2 new 'garden villages' on Gamston Airport and the old Bevercoates Colliery site, which together will provide 1,000 houses (15%) by 2035. This total will expand to 4,000 beyond 2035.

#### Required Housing

It is proposed that the housing in each Parish should increase by a minimum of 10%. In the case of our Parish this works out at 50 houses. The NP has already allocated the Broad Gores site for 38 houses and there are 3 other planning consents granted to give a total of 41 new housing sites. ***This leaves us with another 9 housing sites required.***

#### Housing 'Cap'

In addition to the required housing as outlined above the new Draft Plan from BDC sets a maximum number of houses it will allow in each Parish. This is set at 20% of current housing and works out at 93 new houses for Clarborough & Welham Parish. A maximum of 23 houses would be permitted on any one site. ***This leaves us with another 52 housing site allocations to find! (Including the 9 above.)***

These are the numbers in total by 2035.

#### How does this affect our Neighbourhood Plan?

As our Plan does not meet the Required Housing number of the new Bassetlaw Plan it will not control housing development in the Parish, possibly after 2021 ie in 2 years time.





## Options

The options for the Parish Council are:

- i) Do nothing - let houses be built where ever developers or individuals want up to the maximum (cap) of a further 93 houses. This is called 'windfall' development.
- ii) Re-open the Neighbourhood Plan process to find and allocate the 9 required housing sites.
- iii) Re-open the Neighbourhood Plan process to find and allocate the 52 extra housing sites to the 'cap'.

Options (ii) and (iii) involve a lot of work, is unpaid but brings control of housing development back to the Neighbourhood Plan. There is funding available for this work.

The Parish Council have responded to BDC about their Draft Plan but have not made any decisions as to whether the existing Plan should be up-dated. **This requires volunteers from within the Parish.**

*There is much more in the full Strategic Plan which can be seen online at the Bassetlaw Planning Portal.*

**Paul Willcock - Parish Councillor**

## Muslim Calendars

Regular readers will already have explored a little of the background to our current calendar, the so-called Gregorian calendar which is based on Christian traditions but now universally used across the globe. It may have AD (*anno Domini* – the year of The Lord) or BC (before Christ) attached or use CE (Common Era) or BCE (before common era). The actual year counts and starting dates are now common in each of these.

The Islamic, Muslim or Hijri Calendar (these are alternative names for the same calendar) is fundamentally different to the Gregorian in that it is a *lunar calendar* – it is based on phases of the moon rather than solar which leads to it having a length of 354 or 355 days. Readers may recall that the Roman or Julian Calendar had a similar length! Is this a coincidence?

The Muslim calendar was initiated in 622 AD (during that year, Muhammad and his followers migrated from Mecca to Yathrib, now Medina). With its length and that of the Gregorian calendar not being 'in step', the current year of the Muslim calendar is 1440 AH.

We don't have space to explore more of the Muslim calendar – suffice it to say that Ramadan, the ninth month of the Islamic calendar, will commence at sunset on Sunday, 5<sup>th</sup> May. It is observed by Muslims worldwide as a month of fasting to commemorate the first revelation of the Quran to Muhammad according to Islamic belief. This annual observance is regarded as one of the Five Pillars of Islam.

## Periodic Table of the Elements

2019 is the 150<sup>th</sup> anniversary of the Periodic Table of Chemical Elements and has therefore been proclaimed the *International Year of the Periodic Table of Chemical Elements (IYPT2019)* by UNESCO. See our Autumn issue for more on this!





# Fairways Developments

## Household & Garden Services

**T: 01777 860 665    M: 07889 833410**

Special Rates Available for Senior Citizens



## Domestic & Commercial

Proprietor: P. Stringer

### Tree Felling, Removal & Pruning

### Lawns, Hedges & Borders

### Fencing, Gates & Posts Erected & Repaired

### Small Groundwork Projects

### Pond Projects

### Patios, Paths & Slabs Laid & Maintained

### Driveways Cleaned & Jetwashed

### Gutters Cleared & Repaired

### Conservatories Maintained & Small Garden Buildings Erected

### Leaves Cleared & Winter Maintenance Carried Out

**CALL TODAY FOR A COMPETITIVE QUOTE  
AND A PROFESSIONAL SERVICE**

**01777 870 665 . 07889 833410**

**FREE CALLOUT . FREE SITE SURVEY . FREE ADVICE**  
If you would be happy with this level of service reward us with the job





## Bassetlaw District Councillor Kath Sutton



First of all I would like to thank all who took an interest in my two questions concerning the Wheelwright – Chappell tomb which were mentioned in the last newsletter. We are really fortunate and have been able to make contact with a descendant of the Chappell family and hope that family members will visit us soon. The family were aware of their Clarborough connections but not of the existence of the tomb. The Rev Mark Cantrill is investigating various contacts which might help financially in restoring the tomb to its previous splendour.

We were also successful in identifying the present situation of Welham House, mentioned frequently in our historical sources. It is in fact Welham Park and we hope to contact the present owners so that hopefully the descendants can visit their old family home when they visit.

At one recent Parish Council meeting we had an excellent and informative presentation by Councillor Paul Wilcock on how the latest developments in the Bassetlaw Local Plan affect our housing quota as stated in our Neighbourhood Plan. The 38 initially stated needs to increase by 10% to 50, with a possible requirement of a 20% increase to 93. Much hard work has already been accomplished and now there is a need to allocate more land with all the villagers agreement.

It has recently been announced that in Council car parks both residents and visitors will be able to use a cashless parking Ring Go which is a mobile phone service that allows users to pay by credit or debit card and to top up your stay remotely. Civil Enforcement officers can check your use by using special hand held devices. For more information visit

[www.bassetlaw.gov.uk/paybyphone](http://www.bassetlaw.gov.uk/paybyphone).

Bassetlaw District Council is still concerned over our recycling figures, as we have been the fourth lowest in the country and the lowest in the Midlands. The brown bins have raised our profile a little but extra information is to be produced to help counteract contamination as people still put the wrong items in the bins. Also it is hoped that more bottle banks can be placed to help the situation.

To celebrate the 400th anniversary of the journey of the Mayflower Pilgrims to America, Bassetlaw District Council is working with Sherwood Forest Trust on an exciting Legacy project

The objective of the project is to plant oak trees, many grown from Sherwood Forest acorns, across the District to commemorate the Pilgrims and to provide a legacy for hundreds of years to come.

To that end they are looking to work with local communities, land owners and businesses to identify suitable sites to plant the oaks. If anyone wishes to participate in the project and have a potential site in mind please contact David Armiger for more details on; [david.armiger@bassetlaw.gov.uk](mailto:david.armiger@bassetlaw.gov.uk)

I was very pleased to be able to put forward the Clarborough and District W.I. for an Achievers Award at the Council's March celebration where Mrs Lesley Baines was

presented with their certificate. They work so hard for all of us and fully deserve this award, being, I feel, at the hub of village life. **[Editor's note: See page 20 for a photo!]** Finally (I once read that was the favourite word to see or hear when reading or listening to an account!) I would like to thank you all for your help and support in my 17 years of being your District Councillor. It has been a real pleasure meeting so many of you and being of help whenever I can. I know that whoever succeeds me has the most friendly, cooperative and welcoming ward in the whole of Bassetlaw.

Goodbye and thank you all.

Kath

## Why do financial years start in April?

Regular readers will remember our *Calendar* article from our Spring 2019 issue. Now for a bit about money!

*Lady Day\** was New Year's Day between 1155 and 1752, having been generally recognised as New Year's Day since ancient times. This recognition of the New Year starting at this time is linked to this being the Spring Equinox, the time at which the lengths of day and night are equal.

So why do most current calendars start on January 1<sup>st</sup>?

That is another involved story – but basically goes back to Julius Caesar again – watch this space!

When the Gregorian calendar was adopted in the UK the calendar needed to be advanced 11 days to align with Europe (see our Spring 2019 issue for much more on this). To retain tax income over the transition the tax year was kept as 365 days making the start of the next tax year April 5<sup>th</sup>.

The official start of the year on the Julian calendar used to be Lady Day (25<sup>th</sup> March), and this was also the official start of the tax year. However the introduction of the new calendar and the loss of the eleven days in 1752 meant this date was changed to 5<sup>th</sup> April in 1753, to avoid losing 11 days of tax revenue. Another change was made to the date in 1800, as this would have been a leap year in the Julian calendar but not in the new Gregorian calendar. So again the tax year was extended and the date changed to 6<sup>th</sup> April where it remains to this day.

\**Lady Day*, in Western Liturgical tradition, commemorates Angel Gabriel's announcement to Mary that she would give birth to the Christ.

Editor

### ReNew Carpet & Upholstery Cleaning

- High Powered Portable Equipment
- Commercial & Domestic Services
- Stain Removal / Reduction
- Satisfaction Guaranteed
- Dry in Hours NOT Days
- 'One Off' or Regular Cleans
- Fully Insured & Experienced CRB Checked Operators

Please Call Mob: **0755 000 2242**  
Tel: **0177 770 2779**

*"The bitterness of poor quality service lingers long after the sweetness of price is forgotten"*

## Pilgrim Roots – are they deep enough?

Readers will probably be aware that work is underway to transform a redundant council building into a fabulous new Gallery at Bassetlaw Museum in Retford, celebrating the life of one of the District's most famous sons.

The Pilgrims Gallery is part of a £750,000 Heritage Lottery funded project which commemorates the 400<sup>th</sup> anniversary of the Mayflower's voyage to America in 1620. When completed, the Gallery will feature a recreation of William Brewster's study, where visitors can learn more about the academic life of Brewster who lived at Scrooby Manor. The Study part of the gallery includes a combination of high-tech digital elements including augmented reality film and more hands-on activities for children such as block printing and writing with a quill and ink, echoing Brewster's history of running a printing press in Leiden.

The Mayflower 400 partnership is a transatlantic organisation co-ordinating events leading up to 2020 celebrations of the Mayflower Separatists arrival in America. To complement the Mayflower 400 partnership, a regional partnership entitled *Pilgrim Roots* has been established. Members of the Roots group include West Lindsey District Council, Doncaster Metropolitan Borough Council, Nottinghamshire County Council, Boston Town Council and a number of other interested organisations including Bassetlaw Christian Heritage and University of Lincoln. For Pilgrim Roots newsletter, see : <https://pilgrimroots.org/>

The aims of this group are to work with national Mayflower 400 initiatives whilst ensuring that the unique story of the Separatist roots are not overshadowed by the story of the journey of the Mayflower ship.

*Illuminate* is the signature event held, usually, in the 4<sup>th</sup> week of November, coinciding with the Thanksgiving Holiday in United States. This celebrates the arrival of the Mayflower in early November, 1620 having sailed from England some two months previously. Bassetlaw has celebrated *Illuminate* events since 2015, varying the theme and location each year and it is anticipated that the 2019 and 2020 *Illuminate* events will be spectacular.

**Editor:** Readers might like to consider David Marcombe's book at the foot of the facing page, which suggests that Retford and Clarborough had significant movers in the Separatist movement.

## historical background

Clarborough is not what it used to be! Readers who have explored our community website's ([www.clarborough-welham.org.uk](http://www.clarborough-welham.org.uk)) *Local History* pages will be well aware that Clarborough was a much bigger parish in Medieval times. In fact the parish was only cut down to its current size in 1871 when St.Saviour's church became centre of its own parish.

Clarborough parish (or Claueburch or Claireburg as it appears in the Domesday Book) originally extended into central Retford – down Moorgate and Spital Hill.

Through to the 15<sup>th</sup> century Clarborough was almost as

important a centre as East Retford. West Retford, by comparison, was a different authority and much smaller in population than either of these.

As the population of East Retford increased as the Industrial Revolution gathered pace, the population distribution of Clarborough parish became increasingly concentrated at the Retford end, particularly Moorgate and Spital Hill. At that time it was both Ecclesiastical law and employer expectation that everyone would attend church on Sundays which meant that an increasing number of people were having to walk to Clarborough's parish church of St.John the Baptist – a walk of a couple of miles there and back.

By the start of the 19<sup>th</sup> century this issue had risen to the top of local agendas so that moves began for building of a chapel-of-ease on Moorgate so that local people could easily access services. This chapel, St.Saviours, was started in 1828 and consecrated in 1829 but remained under the direct control of St.John the Baptist church on Clarborough's Church Lane.

With the parish realigned in 1871 to represent the more rural parts of the former extended parish, the northern part of the medieval parish that extends down to the edge of current Retford simply became known as the parish of Clarborough. It was only in December 2006 that Welham's place in the local scene was confirmed when the parish was renamed The Parish of Clarborough & Welham.

An excellent source of this and vastly more is to be found in ***English Small Town Life: Retford 1520-1642*** by David Marcombe ISBN 1 85041 068 2. Copies are available from Bassetlaw Museum.

# PENNINGTONS

EURONICS SALES

EURONICS SERVICE

**WE STOCK A WIDE RANGE OF APPLIANCES**

**We also Deliver, Install and Remove**

AEG BOSCH Blomberg SONY belling dyson

PENNINGTONS ELECTRICAL | 66 CAROLGATE | RETFORD | DN22 6EF | E: PENNINGTON01@BTCONNECT.COM  
WEBSITE: WWW.PENNINGTONSELECTRICAL.COM

**WE REPAIR & SERVICE A WIDE RANGE OF APPLIANCES**  
Including: Washing Machines, Tumble Dryers, Electric Cookers, Vacuum Cleaners & more!

**WE ALSO REPAIR & SERVICE BROWN GOODS**  
Including: Televisions, Recorders, Hi-fi Equipment & More!

**CALL US TODAY ON**  
**01777 705551**





# K9 Cuts Dog Grooming

66 Broad Gores, Clarborough DN22 9JX

**Shampoos**  
free from  
chemicals,  
containing 100%  
pure essential  
oils

**Full Grooms**  
**Bath and Blow Dry**  
**Puppy Introductions**  
**Nail Clipping** (including small mammals)  
**Discounts for Assistance Dogs**

Full insured,  
Certified  
Professional  
Groomer  
offering a one to  
one service



## Emmi-Pet Teeth Cleaning

Vibration free without  
brushing. Contact us for  
further information



*Recommend a friend - £5 off a full groom for you and a friend when  
registering as a new customer*

# Tel: 07795 116731

Find us on Facebook and Instagram



@K9CutsDogGroom



@K9CutsDog

## Email TV Licensing scams continue

An ongoing TV Licensing phishing campaign, first identified by the National Fraud Intelligence Bureau (NFIB) in September, 2018, continues to be heavily reported to Action Fraud.

Fraudsters are sending fake TV Licensing emails designed to steal personal and financial information. Since April 2018, Action Fraud has received more than 900 reports with victims losses exceeding £830,000.

You can protect yourself:

- Don't click on the link or attachments in suspicious mails and never respond to messages that ask for your personal or financial details.
- Don't assume that a phone call or email is authentic, even if someone appears to know your basic details, such as name or address. Remember that criminals can spoof phone numbers and email addresses to appear as companies you know and trust, such as TV Licensing.
- Your bank will never call and ask for your PIN, full banking password, or ask you to transfer money out of your account.

## Workshop Priory Tours continue...

Forthcoming tour dates: Wednesdays April 24<sup>th</sup> and May 15<sup>th</sup> (14:00-15:45)

Problems? .....Tel. 01909 475 934

## Law & Order

PCSO Dave Airey's monthly reports are published in full on our community website (**Law & Order ► Local Police Reports**) were Dave lists recent local crimes, trends and also important advice for everyone and also thanks local residents for their vigilance in reporting suspicious matters.



## THE BEAT

Initiatives also include an anti-violence project involving "violence interrupters" who gather at fast food restaurants, trainer outlets and high-end fashion shops in the city frequented by young people. These have already had significant success in diffusing potentially violent group confrontations.

Support also continues for local efforts to eradicate the crime of female genital mutilation. Paddy joined more than 60 survivors and local organisations to sign up to a pledge brought by Nottingham-based campaigners, the Mojatu Foundation, offering my zero-tolerance of this violence.

**Editor's note:** to keep up-to-date with Paddy Tipping's newsletter go to our community website's **Law & Order ► Police & Crime Commissioner** page.

At a county level, Police & Crime commissioner Paddy Tipping's monthly newsletter, *The Beat*, reveals current initiatives focused on knife and gun crime.

Established  
1991



# Tandoori & Balti Restaurant

## 27 years of memorable dining experience

22 Grove Street, Retford DN22 6JR  
Telephone 01777 704 000





Aurora Wellbeing Centre, which is based in the Old Library Building on Memorial Avenue in Worksop, is at the forefront of an initiative which was launched across South Yorkshire,

North Derbyshire and Bassetlaw last year to raise awareness of the signs and symptoms of cancer and the opportunities for screening which ultimately could increase the number of people diagnosed with cancer earlier.

Did you know that in Bassetlaw we have more people diagnosed with cancer than the England average? People in Bassetlaw are less likely to attend for screening, more likely to be diagnosed with cancer at a late stage and, as a consequence, are more likely to die from cancer.

Here at Aurora we are aiming to raise awareness within the local community of these statistics and what we can do to improve them. We have held workshops, manned stalls at local supermarkets and given out leaflets at sports events.

We have been able to gain access to the larger companies in Bassetlaw such as B & Q and Wilko's to name but a few and given talks at local schools and academies, Women's Institutes, Rotary Clubs and U3A groups. If you would like know more about this campaign or about Aurora in general then please contact the Aurora Wellbeing Centre on 01909 470 985 or email [admin@aurorawellbeing.org.uk](mailto:admin@aurorawellbeing.org.uk) or visit [www.aurorawellbeing.org.uk/worksop](http://www.aurorawellbeing.org.uk/worksop)



Aurora offer so much more than advice on cancer screening. If you or a family member has been affected by cancer then we are here to help. Aurora's services are available to anyone living in Bassetlaw. We can provide access to information and advice on wellbeing and counselling, support groups and courses ranging from helping to improve your sleep to nutrition for both cancer patients and the general public. We have beauty therapists



available who can offer up to 6 free beauty treatments to cancer patients as well as holistic therapies such as Reiki and Reflexology. In the Centre you can enjoy a delicious home-cooked meal in Valerie's Tearoom or browse our well-stocked charity shop which is open Mon-Fri 09:00 to 16:00. Come along and see what we do!

**Editor's note:** For more on the Aurora Centre and its local events, see your community website's **Voluntary Sector Links ► Aurora Centre.**

## Summer 2019 Minibus Trips



### NEW Friday 17<sup>th</sup> May

Chesterfield Shopping (including market)  
£12.50 per person

### Wednesday 22<sup>nd</sup> May

Lakeside and Whitby's fish-n-chips  
£11.50 per person

### NEW Tuesday 4<sup>th</sup> June

Matlock Bath and (optional)  
Heights of Abraham  
£11.50 per person

### Tuesday 18<sup>th</sup> June

Skegness  
£17.00 per person

### Wednesday 26<sup>th</sup> June

Springfield Outlet Spalding  
£16.00 per person

### Monday 1<sup>st</sup> July

Bakewell (including market)  
£13.00 per person

### Tuesday 9<sup>th</sup> July

Beverley Shopping and Minster  
£16.50 per person

### NEW Wednesday 17<sup>th</sup> July

Ingoldmells (including market)  
£17.00 per person

### Wednesday 31<sup>st</sup> July

Newark Castle and Shopping  
£12.50 per person

### NEW Monday 5<sup>th</sup> August

Hull shopping OR The Deep  
£17.00 per person

### NEW Wednesday 14<sup>th</sup> August

Downtown & Boundary Mills,  
Grantham  
£10.00 per person



**NB the price of the trip is purely for the travel element and does not include any admission fees.**

**Please note – all trips and prices are correct at time of printing but are subject to change.**

For full booking details together with contact details, see our community website's home page.

Alternatively, contact Bassetlaw

Action Centre on (01777)

709 650 or e-mail [enquiries@actioncentre.org.uk](mailto:enquiries@actioncentre.org.uk)

or drop in at Bassetlaw Action Centre, Canal Street, Retford DN22 6EZ



The whole problem with the world is that fools and fanatics are always so certain of themselves, and wiser people so full of doubts.

**Bertrand Russell (1872-1970)**



## Clarborough & District W.I.

It doesn't seem five minutes since I was writing about our Christmas activities, but spring is here and the last three months have been no less eventful.

We were a little sad when we dismantled our poppy montage in the Church which was our tribute to those who fell in the First World War. Since then the poppies have all had pins attached and will be handed over to the Royal British Legion to be sold for this year's poppy appeal.

At the January meeting we welcomed the Reverend Canon Haydock who shared some of his amusing stories from his life as a country vicar in Nottinghamshire. The ladies also got a bit of a shock when one of our members challenged those who are able to walk 1000 miles in 2019 – that's 1000 miles each! Five people took up their boots and although most of the miles have been walked independently we have enjoyed group walks at the Idle Valley Nature Reserve, Creswell Crags and Clumber Park. With more walks planned things are going well so far... Watch this space!

February's meeting featured Glenis Barrowman who explained how she – an ordinary mum - had ended up as a judge of international curling competitions. She has attended several Olympics, para-Olympics and world championships. It was an inspiring story.

In March our visitor was Cathy Wright, the proprietor of Cathy's Chocolates and Cakes. This is a small local business which specialises in high quality hand made chocolates. Cathy demonstrated how to make simple chocolate truffles and flavoured chocolate whilst sharing tips on how best to store and handle the chocolate. We really enjoyed the samples.



Also in March [above] we were so proud when our President and ex-treasurer, Lesley Baines, accepted an award on our behalf from Bassetlaw District Council. The award is for service to the community and we were nominated by Kath Sutton. Thank you so much!

There are several exciting things in the pipeline for the rest of the spring and summer. The scarecrow group is busy preparing our entry to this year's competition and we'll be on our stall at the village festival. There is a full programme of meeting planned and the September meeting will be a special open meeting so mark the second Monday in your diaries!

For more information about any of our activities you can look at our page on the village website, email [clarbdiswi@hotmail.com](mailto:clarbdiswi@hotmail.com) or phone 01777 949 847.

**[Editor's note: See our community website's *Local Groups* ► *Clarborough W.I.* for a full programme of speakers through to March, 2020.]**

## The Sons of Pitches, One Night Only!



*The Sons of Pitches*, who shot to fame winning Gareth Malone's BBC TV programme 'Naked Choir', are award-winning artists, who usually play to audiences of thousands in such venues as Sheffield City Hall and Birmingham Symphony Hall. They were resident musicians on Sky TV with Cat Deeley, and travel the world to play to their growing fan base. Now they are coming to Retford. Yes, Retford! The group of five brilliant musicians will bring their lively music and banter to St Swithun's, delivering a jaw-dropping cacophony of vocals and instrumentation without any instruments – you will be left wondering 'How do they do that?' Great family entertainment. A performance of a lifetime. Not to be missed.

Thursday 6<sup>th</sup> June 19:00 in St Swithun's. Tickets are available from Retford Hub, Cannon Square, or online at Brown Paper Bag.

([www.brownpapertickets.com/event/4104060](http://www.brownpapertickets.com/event/4104060)) They're selling fast!

For the full range of forthcoming events at Retford Hub, go to our community website's ***Out-and-About* ► Retford Hub** page.

## Goacher's Farm Shop

Wood Lane, North Wheatley



The only traditionally grown  
Wheatley fruit.

Picked and PYO  
**Strawberries, Raspberries, Cherries,  
Plums, Apples, Pears etc**  
Taste the difference!  
Fresh and frozen

Also available;  
**Asparagus, Turkeys, Honey, Jams,  
Chutneys, Potatoes, Vegetables, Eggs,  
Juices and Home baking**

**Now serving hot drinks**

For opening times please

Phone; **01427 880 341**

or [www.goforgoachers.co.uk](http://www.goforgoachers.co.uk)





- **Demonstrations Available**
- **Professional Parts and Servicing back-up**
- **Electric, Petrol and Diesel options available**
- **Ride-ons, Walk Behinds and Robotic Mowers**

**Clarborough Hill, Clarborough, Retford, DN22 9EA**  
**01777 704823 [www.rbmagricultural.co.uk](http://www.rbmagricultural.co.uk)**



## Going Green in 2019 – some thoughts from your MP, John Mann

John says that he receives a lot of contacts from people in Bassetlaw regarding environmental issues.

The following are his current top

tips for ways for families to help their local environments:

### Say goodbye to single-use plastics

In 2018 we saw the issue of single-use plastics hit the headlines. To help the environment this year, I would encourage you all to invest in a durable water bottle to reuse and to take a reusable cup to the coffee shop to get your coffee.



### Shop local



Instead of ordering from overseas, shop local to reduce the number of miles that food and products have travelled. Some food travels thousands of miles adding to air pollution. Shopping local also helps to boost the local

economy.

### Use energy-efficient light bulbs

Light bulbs use a lot of energy which has a knock-on effect on the environment. You can buy energy-saving light bulbs which do not use as much energy and give out a similar amount of light. Please also remember to turn off lights when you do not need them.



### Insulate your home



Insulating your home is a great way to save energy that is needed to heat your home. This will also help you save money in heating bills. The government have a series of grants to help you insulate your home which you may be eligible for. Find out more information at:

<https://www.gov.uk/energy-grants-calculator>

### Change your energy provider and use alternatives to gas

Increasingly, there are more ways of powering your home using renewable technology. To help the environment, you should also consider using alternatives to gas to power the home. This can also save you money. Visit:

<https://www.moneysupermarket.com/gas-and-electricity/green-energy/> to see what your options are.



Contacts: [mannj@parliament.uk](mailto:mannj@parliament.uk) or 01909 506 200

## Bassetlaw Museum's programmes

### Talks

Museum talks featuring objects from the current exhibition 'Mr Wyse and his remarkable collection'

Tuesday 21<sup>st</sup> May, 14:00-14:30

Saturday 25<sup>th</sup> May, 14:00-14:30

'Brief encounter with Chinese blue and white porcelain' and 'Cleaning museum objects. Tricks of the trade.'

Discover a little bit more about objects on display during

these two talks lasting about 15 minutes each.

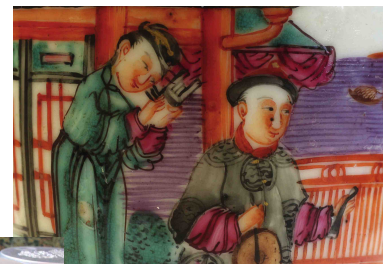
Free. No booking required.

### Exhibitions:

Mr Wyse and his remarkable collection

Friday 8<sup>th</sup> March 2019 – June 2019

Lewis George Wyse



(1867-1955) was a Retford entrepreneur, cycling champion and avid antiques collector.

This exhibition gives an opportunity to see his

eclectic collection of precious porcelain, delicate glassware, artworks and various oddities.

### 'Looking for Colour' by Carol Eason

Saturday 16<sup>th</sup> March – Saturday 11<sup>th</sup> May 2019

Is it possible not to feel moved by colour? How can the process of painting express feelings within its structure? When is it the right brushstroke across a canvas to touch your emotions, to move you from one place to another, a separation of self.

Carol has been exploring this subject through technique and subject matter continuously, this retrospective includes paintings, drawings and prints.

Bassetlaw Museum, Amcott House

40, Grove Street, Retford DN22 6LD

[www.bassetlawmuseum.org.uk](http://www.bassetlawmuseum.org.uk) 01777 713 749

## Dear Editor

As a resident of the village I am appalled at how some fellow villagers and visitors demonstrate little or no respect towards our community with their driving behaviours.

The main concerns I have are the speed at which people are driving through our village, but even more worrying is the speed they are driving around our estates. We have a lot of children and elderly who are vulnerable and this erratic driving cannot be tolerated and only actioned when it is too late. I would also love a better speeding deterrent along Main Street, especially since witnessing an overtaking manoeuvre outside the entrance to our SPAR.

Secondly, local residents and their visitors parking behaviour has become unacceptable and dangerous. I appreciate that the volume of vehicles to household has significantly increased over the years, but when I find myself zig-zagging and squeezing between parked cars, or being forced onto the wrong side of the road on a blind bend I can't help but worry 'what if this was a fire engine or ambulance'?

Combine these factors together and I believe we have a recipe for disaster, hence my appeal for people to take action now and consider that their actions potentially will have a consequence. I certainly wouldn't want a fatality on my conscience.

Please could this be shared & edited in any way you see fit by means of the next available newsletter.

Name & address supplied



## The Bells! The Bells!

Have you ever heard the sound of church bells ringing out over the fields and houses?

Clarborough Church tower originally held just three bells housed in a wooden frame. The smallest reputedly dated from the 15<sup>th</sup> century, the second from the 19<sup>th</sup> century and the largest from 1722. Disaster struck in 1990 when the frame collapsed and an appeal was launched to restore and augment the ring.

It took four years to raise sufficient funds and the work began. Two of the original bells were joined by four more new and second-hand bells in a strong steel frame. The completed peal was dedicated on October 23<sup>rd</sup> 1994 by Bishop Alan of the Southwell Diocese.

However at the time Clarborough didn't have any bellringers! The Churchwarden, Edna Bradley, set out to put that right. Although in her seventies she learned how to ring 'properly' and recruited others to form an active team, some of whom are still part of the current group.



Shortly before her death in 2017, Edna organised and funded the casting and installation of three more bells. With one of the old bells going to join some of its 17<sup>th</sup> century contemporaries in St Mary Le Wigford Church in Lincoln, this brought the Clarborough ring up to eight. The current team of ringers are justly proud of the bells and Edna's legacy. They are a friendly bunch and practise on Thursday evenings (experienced ringers) and Saturday mornings (novices and improvers), and would welcome new recruits. Bellringing can be performed by people of any age from teenagers to retirees looking for a new hobby. Perhaps the whole family could get involved? If you are interested and would like more details please phone 07973 821 311 or email [sewhardie@gmail.com](mailto:sewhardie@gmail.com)

## 2019 Anniversaries

30<sup>th</sup> fall of the Berlin Wall (9<sup>th</sup> November, 1989)  
50<sup>th</sup> first Moon Landing (20<sup>th</sup> July, 1969)  
75<sup>th</sup> D-Day Landing (6<sup>th</sup> June, 1944)  
100<sup>th</sup> Treaty of Versailles (28<sup>th</sup> June, 1919)  
100<sup>th</sup> Election of the UK's first female MP – Lady Nancy Astor (15<sup>th</sup> November, 1919)  
500<sup>th</sup> Death of Leonardo da Vinci (2<sup>nd</sup> May, 1519)  
950<sup>th</sup> *Harrying of the North* by William I (*The Conqueror*) in 1069. Some consider this to have been genocide.

## Groundbreaking trial sees thousands sign up for WorkingWin

Residents from Bassetlaw are signing up to take part in a government funded trial to test a new employment support service called *Working Win*; the health-led employment trial. Launched in May last year, nearly 3,000 people from across Bassetlaw & South Yorkshire are already onboard. What are they testing? One-to-one support with help to find work for those not in employment, and continued support once they have started, benefits advice, help to stay in work for those who are struggling or off sick and support working with health care teams to help manage health conditions at work.

Being a randomly controlled trial means that half of the people taking part receive this new support and half of the people are signposted to existing support services in their area.

If you're interested in taking part, then contact the team on 0114 2900 218 or visit [www.workingwin.com](http://www.workingwin.com)

When one door of happiness closes, another opens; but often we look so long at the closed door that we do not see the one that has been opened for us.

Helen Keller (1880-1968)  
American author

## Clarborough & Welham Parish Council Meetings

13<sup>th</sup> May

17<sup>th</sup> June

22<sup>nd</sup> July

Meetings open 19:00 in Clarborough Village Hall

Agendas are always posted at least a week in advance on notice boards and on our community website where you will also find approved Minutes and meeting dates through to January, 2019.

## Newsletter 2019 deadlines

8<sup>th</sup> July (Autumn issue)

21<sup>st</sup> October (Winter issue)

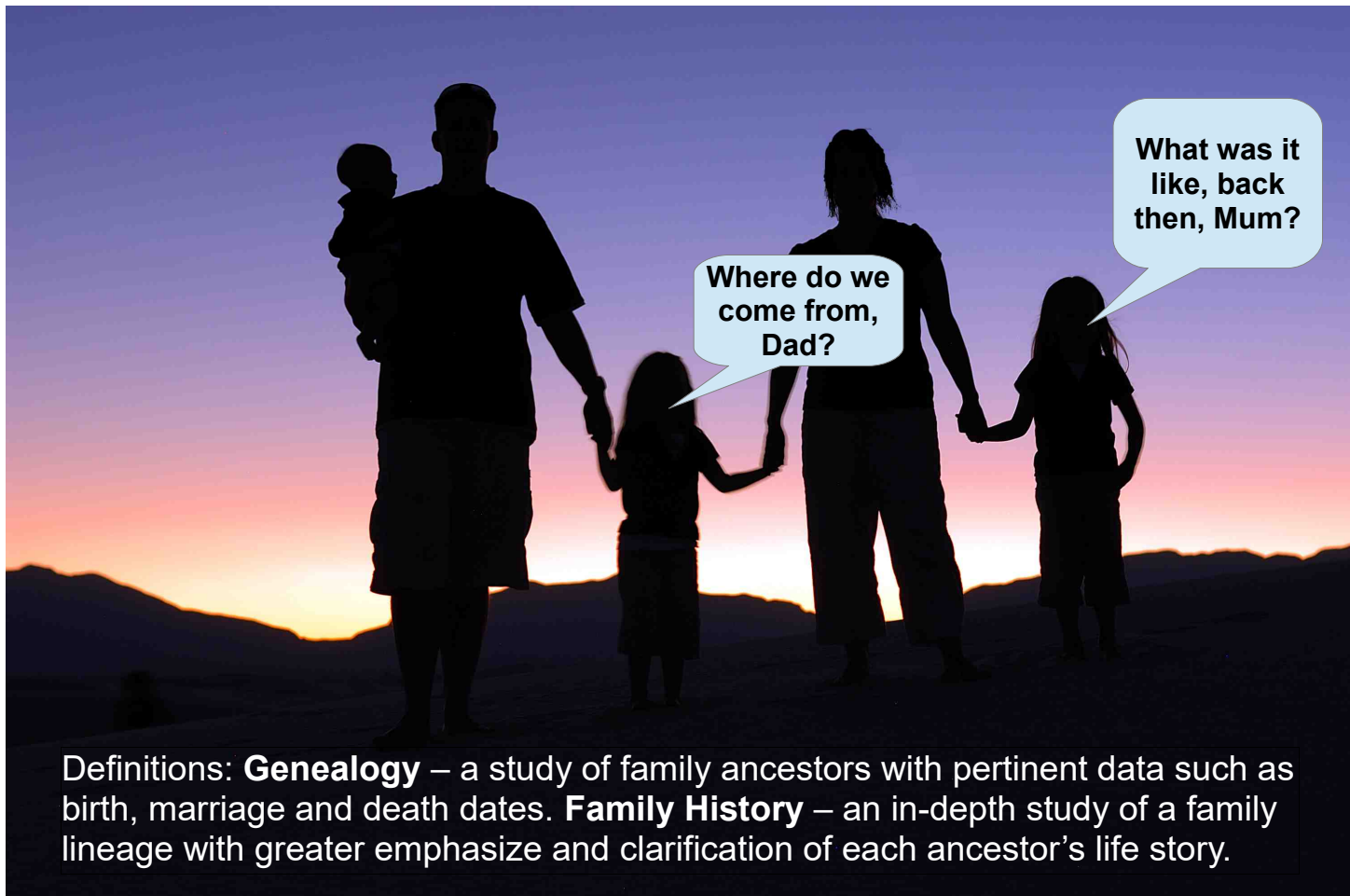
## Newsletter Advertising rates (for all 4 consecutive issues)

Full page	£125.00
Half page	£75.00
Quarter page	£45.00
This size	£25.00

Contact Val (01777) 708 181

Special rates for 'one off' insertions

Yet again, our greatest thanks go to our tireless (!) team of volunteer distributors.



Definitions: **Genealogy** – a study of family ancestors with pertinent data such as birth, marriage and death dates. **Family History** – an in-depth study of a family lineage with greater emphasize and clarification of each ancestor's life story.

If you want the answers, come along to **Retford Library's** twice-monthly Family & Local History Group on Monday evenings (17:00-19:00) – membership is free!

Dates coming soon: 13<sup>th</sup> May, 10<sup>th</sup> June. See library or your community website for future dates.



### Bassetlaw Youth Council

Meeting dates and venues for the summer months are all Thursdays, usually starting at 18:30, as follows:

- 9<sup>th</sup> May at Worksop Town Hall.
- 13<sup>th</sup> June at Retford Town Hall
- 11<sup>th</sup> July at Worksop Town Hall.

The Council has a proposed Houses of Parliament visit for July, 2019 – come along to find out more!

Bassetlaw Youth Council is designed for 11-19 year olds. See also Facebook:

<https://www.facebook.com/Bassetlawyouthcouncil>



### Nottinghamshire County Councillor, Tracey Taylor

This month's message will be brief, not least as we are in purdah as we head for the District Council elections on 2<sup>nd</sup> May. We seem to live in a constant state of flux, from Brexit to local matters.

So I'd like to take the opportunity this month to recognise and honour District Councillor Kath Sutton as she retires after so many years dedicated to the service of residents of Clayworth Ward.

Kath has been a constant presence who is respected and admired by residents and colleagues alike. I am grateful to have had the benefit of Kath's friendship to help me in my role; and her knowledge and measured approach have marked her out as an effective Ward Councillor serving residents' needs. I hope and trust that those of you who take part in the forthcoming elections will choose a successor who will work with the same integrity and diligence that Kath has always shown; absolutely nothing less will do.

If you have a query that you would like help with, please don't hesitate to contact me.

Email [cllr.tracey.taylor@nottsc.gov.uk](mailto:cllr.tracey.taylor@nottsc.gov.uk)

Tel 0115 804 3177

Mobile 07770 847 086 Home 01777 816 781



## 2 MEN WITH A VAN FOR HIRE

Single items to Full Houses

**All jobs considered**



**LOW PRICES**

**Mob: 0755 000 2242**

**or Tel: 01777 702779**

South Street Storage... Secure, Affordable Solutions