

Clarborough & Welham Newsletter

Summer 2016

Produced and distributed by Clarborough & Welham IT Group with generous support from Clarborough & Welham Parish Council

In this issue:

Events

Clarborough Festival	3
Scarecrow competition	2
Retford Arts Festival	8
National Garden Open Day	8
Clarborough Gardening Club Show	8
Retford Library events	12
Milton Mausoleum	5
Bassetlaw Museum	13
Royal British Legion	10

Local Groups

Clarborough & Welham IT Group	5 & 21
Volunteering	23

History

Seth Ellis Stevenson and local canals	6
History of East Retford 'Rotten' Borough	14
Lest we forget	6
Elections – some history	16

News

Clarborough & Welham Parish Council	19
Bassetlaw District Council Press Release	18
Bassetlaw District Councillor	6
Nottinghamshire County Councillor	19
Clarborough School Governor	2
Library Service changes – Inspire	21
Retford Hub	8
Bassetlaw Christian Heritage	22
Queen's birthday celebration	24
UK Trading – a global view	5
Clarborough Village Hall	17
Clarborough Parish Church	22
Clarborough W.I. elections	16

Law & Order

Has your Dog been Chipped?	10
Law School – security	12
Run, Hide, Tell – terrorism advice	13
Online security	3
Important Contact details	11
Animal Quiz	14
Old School bees	24
Bassetlaw Action Centre	21 & 23
Bassetlaw Community & Voluntary Service	23

...and much, much more

Editor: Greg Herdman

(01777) 700 918

clarboroughwelham@gmail.com

Advertising: Val Waring

(01777) 708 181

From the Editor

No, I've not lost it, but sometimes the issues driving the news feel like struggling with hippos! By the way, if you are keen on wildlife, try our African animals quiz.



Momentous decisions await Referendum as well as those arising from the Syrian migrants crisis. Maybe it is pertinent to reflect on progress with the place of nationalism in the modern world as we approach the 100th anniversary of the nations-against-nations carnage that became known as the Battle of the Somme. Our community website is headed 'we're stronger together' which is a powerful message.

On a separate front, current economic realities mean that both services and opportunities are being challenged. Changes to Nottinghamshire library services have already come in under the Inspire banner – do change your library cards next time you are in the library. You will probably have already seen County Council notice that we need to register with recycling centres too – mixed reports have been received recently about how this is working, so do feedback your experiences. Another change that is looming is Government insistence that all schools – including Primaries – become Academies. National debates are whirling around this issue too – maybe getting more involved as a school governor might be an idea.

The latest good news is that our anonymous entrepreneur supporting this year's Newsletter issues with free printing has extended his offer to run through to autumn 2017 at much below 'commercial' rates. This means that, with ongoing support from our Parish Council, the excellent quality we have been able to offer recently will continue through to Autumn 2017 at least. We are striving to establish further funding streams so that we can continue full-colour production.

So, back to events and opportunities. High on the events list come established Clarborough & Welham events such as our Festival and Scarecrow competition as well as our community Garden Club's annual show a little later in the year. This year, however, is Her Majesty's 90th Birthday which will be celebrated by a Parish Council organised event for the whole family on June 11th. Add to these, Retford-based events such as the new Arts Festival plus Museum show-stoppers such as their annual Farming & Countryside Festival. On top of all of that, our Parish Church and Village Hal are both nearing the end of extensive refurbishments – so lots to look at and take in.

Material published in this Newsletter does not necessarily represent opinions of the Editors. Material submitted without full contact details will not be published. All publication decisions remain the responsibility of the Editor alone.

Clarborough & Welham Newsletter is distributed free to every household in our community plus other local outlets and some in Retford and Worksop. Back issues are available on our community website.



Our community website: www.clarborough-welham.org.uk

Contents subject to Copyright © 2016



School Governor vacancies

We are currently looking to recruit three co-opted governors to Clarborough's Governing Body. If you are interested in finding out more about this role then please leave your contact details with the school office (01777) 708 065; office@clarborough.notts.sch.uk) and I will contact you to fix a convenient time to discuss what is involved.

A Governing Body should be the strategic lead body of the school and has a vital role to play in making sure every child receives the best possible education. School governing bodies should have a strong focus on three core strategic functions:

- Ensuring clarity of vision, ethos and strategic direction
- Holding the headteacher to account for the educational performance of the school and its pupils, and the performance management of staff
- Overseeing the financial performance of the school and making sure its money is well spent.

As such key activities of the governing body include:

- Understanding the school - pupil attainment and progress; pupil behaviour, attendance and safety and teaching quality and staff development
- Setting the school's strategic direction - the vision, ethos and values; set priorities for school improvement and consider governance structure
- Commissioning action – agree improvement targets and strategies; agree allocation of resources and agree how to monitor and review process
- Performance manage school leaders – appoint headteacher and support their leadership; hold school leaders to account for progress and ensure financial probity and efficiency
- Ensuring governing body is fit for purpose – clarify role and purpose; review constitution and ways of working and ensure members have the necessary skills

What is a Co-opted Governor?

A Co-Opted governor is a person appointed by the governing body and who, in the opinion of the governing body, has the skills required to contribute to the effective governance and success of the school. You will have:

- An interest in all the children's future
- A desire to make a difference
- A willingness to accept responsibility
- An ability to work in a team, ask questions, listen and learn

As an effective co-opted governor you will support the aims of the school and work in partnership with the

headteacher, senior leadership team and other governors to raise standards and improve outcomes for all children. Co-opted governors can be drawn from parents, community or business representatives. There are two meetings a term, in addition to visits to the school to address specific issues to contribute to school improvement.

Dr Julian White
Chair of Governors

Clarborough, Welham and Hayton 2016 Scarecrow Competition



15th - 22nd May

In association with the Clarborough Festival which is on Sunday 22nd May, Clarborough Village Ventures is organising our second Scarecrow competition. Last year we had almost 50 entries and the imagination and quality was amazing.

Join in the fun, make a scarecrow, raise a few quid for local good causes and perhaps win a prize! Judges will be looking for personality, creativity and humour.

Competition rules and entry forms available on our community website (www.clarborough-welham.org.uk) or from Kings SPAR Shop in Clarborough.

Entry Fee payable (£2 per scarecrow) with completed entry form at Kings SPAR shop, Clarborough.

For more details e-mail stevedoddhome@gmail.com text/call 07519 662 351 or see your community website.

Completed forms must be returned by 9th May.

Steve Dodd



E-mail security: too little space here – but see our community website's **Law & Order ► Neighbourhood Alert** page for full details.

Do you require any land-based training?

Health & Safety, Pesticides, Chainsaws, Fork Lift, First Aid, Abrasive Wheels, Management, COSHH, Employment Law, Vermin control, Livestock courses

North Notts Training Group



"Cost effective professional training for a & efficient tomorrow"



safe

Contact: Vicki Wilson

Mobile: 07855 751 689 Fax: 01427 884 294

vkwilson1@yahoo.co.uk

www.nntg.co.uk

Lantra Awards and City & Guilds



Clarborough Village Festival 2016

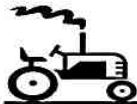
Sunday 22nd May sees the seventh annual Clarborough Village Ventures Festival.
The festival begins at 10:00 with stalls and activities centred on the village hall and its playing field as well as the Kings Arms car park.



Come and join us in
and around the
Village hall, field and
surrounding car parks



- Harworth Drummers from 11:00am
- Lynx Black Belt Leadership Academy at midday
- Register for the Dog Show from midday
- Dog Show starts at 1:00pm
- Scarecrow prize giving 2:00pm



- Prize Draw
- Vintage Cars
- BBQ
- Ice Creams
- Games
- and lots, lots, more



During the day you can feel the beat with the Harworth Drummers, channel your energies with the Lynx Martial Arts Academy, discover the winners of Clarborough Welham and Hayton's scarecrow competition and try your luck with the prize draw and other games...

There's lots to see with vintage vehicles and tractors, steam engines, stalls to browse, lots of games for children plus, of course, our **Annual Dog show** which is the place to be seen with your canine companion!. There's food and drink available, ice creams, a barbecue and beer tent.

2 MEN WITH A VAN FOR HIRE

Single items to Full Houses

**All jobs
considered**



LOW PRICES Mob: 0755 000 2242
or Tel: 01777 702779

AMLOT Building Services

- Alterations
- Internal makeovers
- Extensions
- Garages

Contact Neil for friendly advice
or a quote

t: (01777) 817 847

m: 07712 349 177

e: amlotbs@outlook.com

w: www.amlotbuildingservices.co.uk



Nottinghamshire County Council's trading standards team are now working with **Checkatrade** approved trader scheme.
To find an **approved trader** visit www.checkatrade.com



Oil & LPG service & repair experts

To book a service or
arrange an engineer visit
contact

t: 01777 701 668

m: 07940 159 459

e-mail: enquiries@northnottsheating.co.uk



SIGNAL ELECTRONIC SERVICES

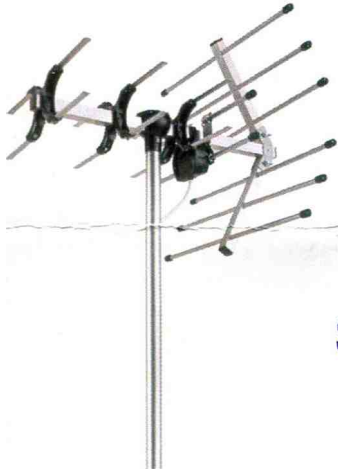


Make sure you're ready for 2011



sky+ skyHD

All Sky Services Supplied and Installed



Satellite and Aerial Installations
Digital Switchover services -
Free Quotes for all Aerial Upgrades

*Closed Circuit TV
Installed and Serviced*

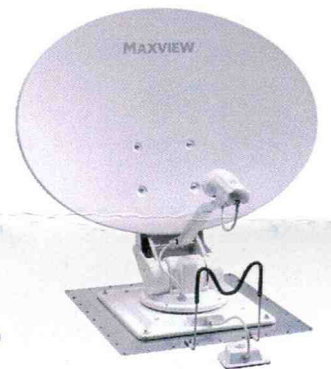
Full Plasma Installations -
Sets mounted on walls/brackets etc.

Cameras and Lighting

Telephone Points and Extensions

Specialist in Multi-point Systems

All Work Guaranteed 1 Year



Domestic, Commercial, Contract & Insurance Work

Free Site Survey, Free Digital Meter Test, Free Call Out, Free Advice
If you would be happy with this level of service *Reward Us With The Job!*

**Contact Philip Stringer (Proprietor) at the Signal Office on:
(01777) 870 665 or 07889 833 410**

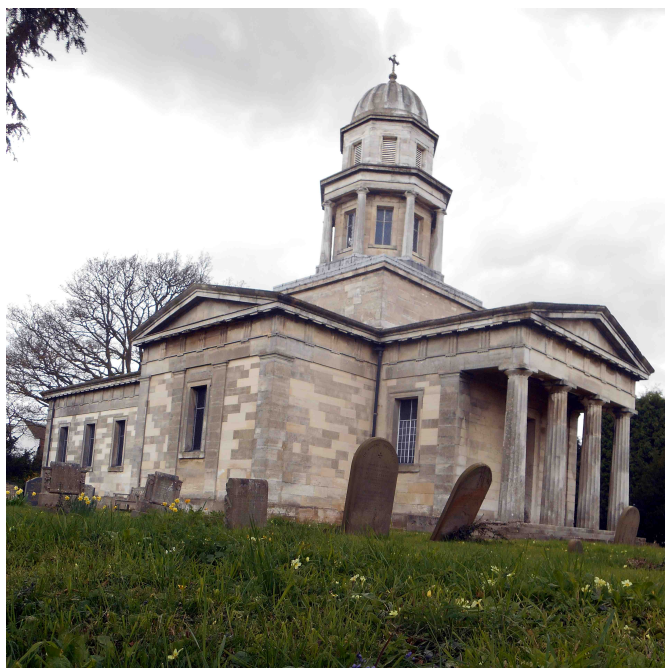
Over 25 Years Experience in the Electronics & TV Industry

Milton Mausoleum 2016

One of the joys of the area we live in is the variety of the history around us. This spans a thousand years from the Roman town of *Segalocum* to the twentieth century history of the Nottingham coal field.

The major forest and parkland area of Clumber Park is a local favourite for all sorts of reasons. Just a small part of the centuries of Clumber history is the story of the family of the 4th Duke of Newcastle and his wife, Georgiana. Theirs' was not an arranged aristocratic marriage but a love story. It was brought to an untimely end with Georgiana's death aged 33.

The Duke decided to build a lasting memorial to Georgiana and a resting place for her and the families' future generations. This is the story of the Mausoleum in Milton.



The building has had a chequered history but we now hope that there will be a sustainable future for the building with work organised by The Churches Conservation Trust. The Mausoleum is now open every Sunday, May to September 14:00-16:00. We now have ten volunteer stewards to open the church and tell you about its history.

We have a number of events at the church during this year:

- June 25th Dukeries Singers 19:00
- June 26th Mid-Summer Tea Party 14:00-16:00
- September 11th Heritage Open Day 14:00-16:00
Speaker, Janet Roberts, author of *The Clumber Love Story*
- December 3rd Winter Music 14:00

These events are still being planned so please look for more information and posters soon.

The Mausoleum is accessible from the Markham Moor junction on the A1 – take the road to Milton and Walesby, left turn in Milton for, The Avenue.

For more information or to enquire about a group visit at other than our usual opening times please contact mausoleum1833@gmail.com.

Beryl Venables

Clarborough & Welham IT Group



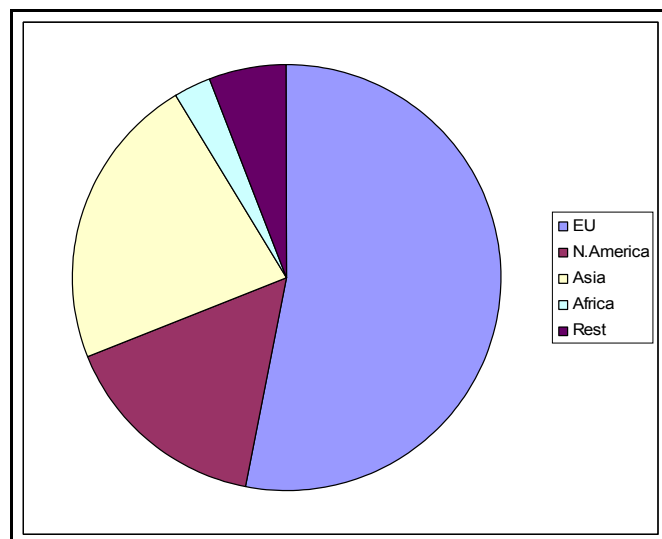
Classes through 30 weeks each year at just £15 for 5 weeks. Sophisticated Google searching, e-mail attachments. editing those holiday photos. Get it all plus hints, tips and a bundle of free worksheets. Our team of hands-on tutors will help you with it all whether you're an absolute beginner or wanting specific skills. Bring your own laptop or use ours. Contact Greg on (01777) 700 918 or clarboroughwelham@gmail.com

Class calendars through to July 2017 are posted on our IT Group website www.cwitgroup.btck.co.uk

UK Trading – a global view

Trading statistics are always a challenge, however, several well-trusted sources provide the following, global, view of the UK as a trading partner:

From a continental perspective, 53.6% of UK exports by value are delivered to European trade partners while 22.5% are sold to Asian importers. United Kingdom ships another 16.1% to North America (USA + Canada) but just 2.6% to Africa. <http://www.worldstopexports.com/united-kingdoms-top-import-partners/>



Close study of UK Government sources (such as the Office for National Statistics or ONS makes simple EU trade comparisons very difficult since ONS insists on dealing with individual members of the EU and never aggregate figures to help analysis.

Current OECD and other figures show the EU roughly equal in size to the US economy. However, rapid rises in economies such as China (widely expected to be 'Number One' by 2020), India, Brazil and South Korea means things are changing fast. By the time current school pupils are into mid-career they can expect a world in which China is the super-power and these other 'top table' economies calling many of the shots.

So, does it make sense for UK to 'go-it-alone' into such a 'brave new world' of major power blocks?

Editor



District Councillor Kath Sutton

As you are aware devolution is a hot topic and is discussed elsewhere in the newsletter so I will be brief. In March Bassetlaw District Council decided to

apply to join a devolution deal with Sheffield City Region, though there will be a period of public consultation ahead of the Secretary of State making the final decision. At the last Rural Conference I attended this devolution deal was discussed by Bassetlaw District Council's Chief Executive Neil Taylor. Also there was an interesting discussion led by 3 young Parish Councillors (aged about 20) with the focus as to how more young people could be encouraged to be involved in the work of Parish Councils. Finally the new Bassetlaw Plan for Planning was outlined. On a different note Bassetlaw District Council is coming to the end of its financial year and it is an appropriate time for me to outline how I have spent my Councillors Community Grant.

Clarborough received money for the Parish Council Senior Citizens Christmas Party which is organised by the WI. Some money was also given to buy a new table tennis table for the group who meet in the Village Hall.

Clayworth also had money for their Senior Citizens Christmas Party, plus money to help towards their celebration for the Queen's 90th Birthday.

Hayton received money to reorganise their old Phone Box into a lending library, plus help towards their village newsletter. All very worthy causes.

As always do get in touch if you feel I can help in any way. Phone (01777) 709 034

Kath Sutton

Lest we Forget



Regular readers will recall Pete Cox's article (Summer 2014 issue) honouring the memories of men from Clarborough, Welham, Hayton and Clayworth whose names appear on Retford's War Memorial. **Here we remember**

William Brocklesby who died on 1st July 1916

RETFORD

MOTOR SPARES LTD

Parts & Accessories for all makes of Cars and Vans

Tel: 01777 704 432
Fax: 01777 869 369

17 Lidget Lane, Retford, Notts DN22 6QL

SUPPORTING THE INDEPENDENT AUTOMOTIVE AFTERMARKET

The Reverend Seth Ellis Stevenson

Being a total devotee of all to do with the Chesterfield Canal since 1976 and having a mooring since 2006 at the Retford and Worksop Boat Club, I was privileged to be asked by the author and historian, Christine Richardson if I would join in with her in reviewing the life and times of James Brindley.

His is the name which springs to the fore when the beginnings of this Canal are mentioned and rightly so, as not only was he the instigator of the canal movement in this country, but is credited with helping start the whole Industrial Revolution which so altered life and society in the 18th Century, - thus leading on to the slick power driven society that we enjoy today.

However, as far as the Chesterfield Canal is concerned, - he did the initial surveys and laid out the route to be taken from Chesterfield to West Stockwith, then appointed other men to take over the actual work as he himself was in great demand by other Companies wanting canals in their own areas. He left Retford in order to conduct a survey of the Caldon Canal.

Unfortunately he was not a well man. He was badly diabetic - a complaint known about but not understood at that time. So getting wet through as I suppose he often did, he caught a "chill" which turned to pneumonia and his systems weakened by the diabetes -- that led to his death.

This was in the year 1772 when the Chesterfield Canal Company had only been functioning for one year, so they then had to carry on without him, just using the men he had trained and appointed to do the groundwork.

It is the names of those men who are revered today on the Chesterfield Canal, - by the naming of boats after them, the "John Varley" and the "Hugh Henshall", - boats which carry the public and therefore keep their names in the public consciousness. But why the "Seth Ellis"?



J & J Electrical



For all your Electrical needs

Repairs - Alterations - Additions - Installations
Inspection and Testing
Domestic and Commercial
Anti-condensation systems

No job too small

Telephone : 07771 163778

Lawnscut
Lawn Cutting Service

Lawns Cut Every 7-14 Days

All Cuttings bagged for your easy disposal.

Please Call for Information & Quotes:
Mobile : 0755 000 2242
Phone: 01777 702770
Email: lawns-cut@live.co.uk
Your Satisfaction is our pleasure!

Looking at all the material already written and documented about Brindley, I became aware that I wasn't capable of discovering anything new about him, but during my early investigations I became aware of the man who did grip my imagination - the Reverend Seth Ellis Stevenson. Of all the people who had to do with the creation of the Chesterfield Canal he seems to me to be what today would be called in modern parlance a "mover and shaker".

We first discover him as a Retford resident who heard a rumour that something called a "Canal" was to be created linking the towns of Chesterfield and Bawtry. Bawtry being already a port on the River Idle, with excellent access to the River Trent and thus to the Humber Estuary and the seas.

He rode North for a period of nine days, with his friend the Rev Mr Shilleto, - to find out exactly what a "Canal" was all about, and they looked at the Bridgewater Canal to the North of Manchester.



Remember that at that time in our history Mr McAdam had not been born and roads all over the Country were deep in mud most of the time and all traffic between one place and another was a matter of horseback (if you had one) or a struggle through the mire if you hadn't.

Also the carriage of any kinds of goods was fraught with difficulty. You could use either pack horses or wagons. Wagons got stuck, broke wheels - got into difficulties if the carthorse(s) went lame or couldn't manage the slopes. Packhorses could only carry a certain amount each on panniers, one each side, and were linked together, so if one fell or had any difficulty, the whole train halted until it was sorted. Progress was always painfully slow and nothing really heavy could be carried at all.

Rich people travelled by coach, but had just the same difficulties as their money didn't make the road system any better. It just meant that they had to pay a lot of servants to keep them out of the mud. And that didn't always work as a coach was just as prone to break a wheel or get a lame horse, as that of a poor man.

The Rev. Seth was very impressed with what he saw "up North" - and came back fully determined that Retford was not going to be left out of this scheme.

Linda Davies

Linda's article will be concluded in our next issue.



CSJ Specialist Canine Feeds, specially formulated by vets, herbalists & the UK's leading nutritionist for working & sporting dogs.

Your local stockist is

**HOWBECK GARAGE
MAIN STREET
CLARBOROUGH
07790 431 510**

www.csjK9.com

www.clarlborough-welham.org.uk for back issues



**BRIAN WEBB
(SOLID FUELS)**



We offer a full range of coal & smokeless fuels and deliver on a regular basis in Your Area.

Give me a call on:

01302 867 865

USED:

- FURNITURE
- WHITE GOODS
- NIK-NAKS
- BITS & BOBS

**FULL & PART
HOUSE CLEARANCES**

TEL 01777 702779

OR TXT: 0755 000 2242

**South Street Business Centre, Beehive Street
Retford, DN22 6JE**

National Garden Scheme Open Day on Sunday 26th June

Bolham Manor's garden off Tiln Lane DN22 9JG, will be open for the National Garden Scheme on Sunday 26th June 13:00-17:00. Admission £3 children free. Enjoy this much loved 3 acre garden with its mature trees and dancing ladies! Meander along the terraced planting



down to the ponds and cave. Stroll past the herbaceous borders down to the orchard with its climbing roses. Home made teas available. All proceeds to charity.

Pam Barnsdale

Claborough Gardening Club Show

On Saturday 20th August Clarborough Gardening Club will be holding its 12th annual show. Full details, schedules and entry forms are available from our community website (www.clarborough-welham.org.uk).

The show will be open to the public from 13:30 – entry fee just 50p and refreshments will be available, so why not have a great afternoon out and get some ideas too!

Our Club meets year-round in Clarborough Village Hall on the first Saturday of each month starting at 14:00. New members always welcome. Forthcoming meetings include:

- June 4th: Don Witton – *Herbaceous Perennials and Borders*
- July 2nd: General Meeting

Mick Cassell

Retford's Celebration of Creativity Our First Ever Arts Festival

An inspiring and diverse mix of visual art, creativity, theatre, music and poetry is to be showcased at many venues in and around Retford throughout the bank holiday weekend of 28th to 30th May, 2016. Artists of every kind will be taking part and exhibiting or performing their work for free in the first ever *Retford Arts Festival*.

Many local artists including: Angie Larry, Broonzy Williams, Elvira Foster, Joan Wilcox, Hilary Cartmel, John Nooth,

Elda Bowie, John Wright, Artempo and Gerry Fruin are amongst those who will be exhibiting and will ensure that *Retford Arts Festival* is the must-visit, free event for everyone in north Notts. They will be exhibiting their work in many familiar places around the town such as: The Hub; West Street Gallery; Print Ink Co; Swanyard Music Studios; the Brick and Tile pub; St Swithun's Church; Indigo Blu; Babworth Church; and Spencers. There are opportunities to demonstrate support of this festival through: sponsorship of individual events, provision of printed materials and signage, donations to help toward the costs of hiring equipment and of course, volunteering in any capacity. For further information concerning any aspect of the festival please visit www.retfordhub.org or call The Hub on (01777) 860 414.

The creation of *Retford Arts Festival* follows the establishment of the recently created Hub situated at 11 Church Gate, Retford DN22 6PA. Through his work at The Hub, Chris Daniels very quickly realised there was a wealth of expertise that deserved to be showcased. What better way to do this than for Retford to have its very own Arts Festival and so, under his pioneering leadership, the festival was born! He firmly believes that this unique festival will bring visitors to Retford and increase footfall in and around the town. He commented: '*Retford Arts Festival* will create an awareness of the huge amount of talent that exists in our area and help to build a strong artistic community - but above all, it is a chance for everyone to get together and have fun! There will be opportunities to have-a-go at workshops, see demonstrations, talks and taster sessions... in fact something for the entire family to enjoy together over the bank holiday weekend. Retford is probably Nottinghamshire's best kept secret and it's time we let the rest of the world know about it!'



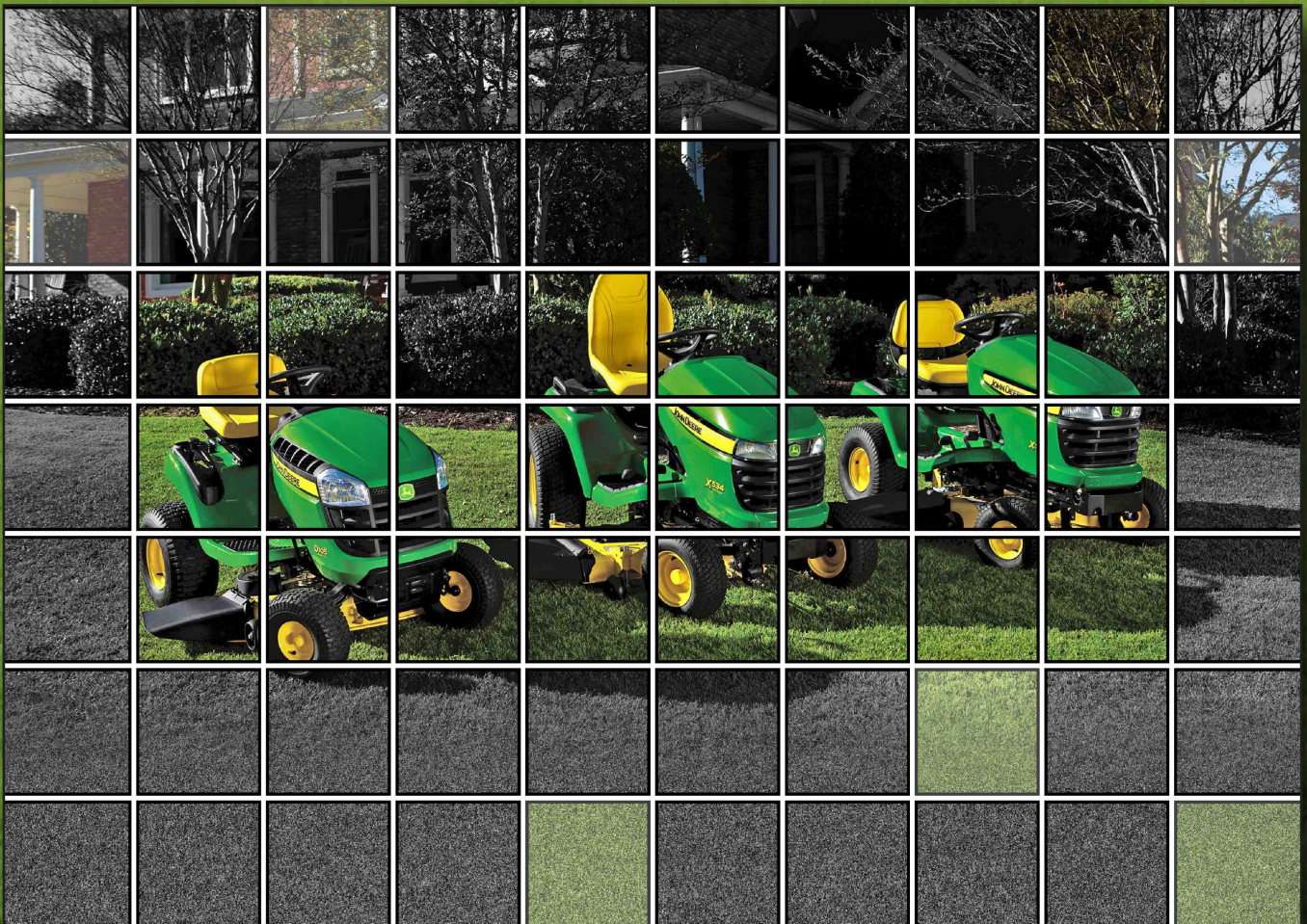
Retford Hub

- Retford Hub is home to the Tourist Information for North Notts, and the full range of services is available for visitors and residents.
- Retford Hub is run entirely by volunteers and is non-profit-making. It aims to promote local arts, attract tourists, support local business and provide an arts centre for the people of the Retford area.
- Retford Hub is a showcase for North Nottinghamshire. It incorporates an arts centre with art gallery, workshops and resident artists studios with a farm shop selling local fruit and vegetables, artisan cheese counter and a variety of produce.
- Over 50 artisans' and 30 artists' work is on permanent display at Retford Hub
- Retford Hub is the headquarters of 'Retford Arts Festival'

RBM Agricultural Ltd
Providing agricultural machinery,
servicing, parts & advice to all our
customers since 1936

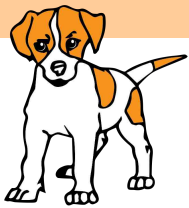


**RBM can make sure everyone's
lawn is green this Spring**



- *2 Year Manufacturer Warranty*
- *Models in stock and available to view*
- *Professional Parts and Servicing back-up*

Clarborough Hill, CLARBOROUGH, Retford 01777 704823
www.rbmagricultural.co.uk



Attention all dog owners

Did you know that from April 6th 2016 all dogs must be microchipped by law?

Did you also know all puppies should be microchipped between 6 and 8 weeks of age and before transfer from

their breeder?

You should also know that even if your dog is already micro-chipped, all the contact details need to be up to date.

What do I do if my dog is not microchipped?

Book an appointment with your vet or veterinary nurses who will implant the chip and assist you with the registration.

What do I do if my dog is microchipped but am unsure if my contact details are up to date?

You will need to contact the relevant microchip database and to do this you will need to know your dog's microchip number and the data-base it is registered on. You will find these details on your registration paperwork. Alternatively your vet can retrieve the chip number from your file or scan your dog to get it.

To find out the relevant database you need to contact go to www.anibase.com and use the "chip checker" to find out. The following details need to be accurate on your registration:

- Your name, address and telephone number.
- The dog's name, sex, breed, colour of the dog and a description if a cross-breed.

Royal British Legion Retford & District



The local branch of The Royal British Legion are organising a couple of events over the next few months and would love to hear from anyone who would like to take part.

The first is a **celebration for the Queen's 90th birthday**. The monthly meeting on **June 6th** has been re-located to The Goodwin Hall, where, after a short meeting, a fish and chip supper will be provided. This will be free to all veterans and a small charge will be made to all others in attendance. For catering purposes it is important that numbers are known before the event, so booking is essential. Please ring Ann Hickman on (01777) 818 993 for further details or to book your place.

2016 also marks 100 years from the first day of The Battle of the Somme. The loss of life on this one day means that 1st July 1916 is remembered probably more than any other event during WW1. Several local men fell on that first day of the battle and a short service of commemoration will be held at the War Memorial in the Market Square at 10:00. Details are still being finalised but we would like as many people there as possible to mark this event. Again further details will be available from Ann nearer the time. Please get in touch if you have someone from your family who was killed on 1st July.

Please come and join us for a Celebration on 6th June and a Commemoration on 1st July.

The Kings Arms Clarlborough

Darts Tournament Sunday 29th May

Entry £2 per person including free buffet
501 knockout and two finalist, best of 3 legs.

Tournament starts at 6pm

A gallon of ale for the winner!

Bingo every Monday from 19:00

Quiz Night every Wednesday from 20:00-22:00 Free Buffet

*Good food, good drinks and good company
come and find out more!*

We have ample car parking too!



The Kings Arms, Main Street, Clarlborough, Retford DN22 9LN
(01777) 708 845 or mzawarta@hotmail.co.uk



The Kings Arms Clarlborough



We are a traditional village pub located on Main Street just a short walk from the Chesterfield Canal with ample parking. We have an open fire, traditional pub games and cask ales (changed regularly) as well as lagers, wines plus hot and cold drinks. Food is served Tuesdays to Saturdays 12:00 - 20:00 plus Sunday lunch 12:00 -16:00

Local Contacts

Alcohol Advice Service (01777) 272 244
Alzheimer's Society 01909 730 886
 (Bassetlaw Dementia Support Service)
Ambulance (Emergency) **999**
Anglian Water 0800 771 881
 (report leaks or other service issues)
Bassetlaw Action Centre (01777) 709 650
enquiries@bassetlawactioncentre.org.uk
Bassetlaw Clinical Commissioning Group
 (01777) 863 288
Bassetlaw Community & Voluntary Service (BCVS)
 01909 476 118 www.bcvs.org.uk
Bassetlaw District Council 01909 533 533
Bassetlaw District Councillor (Kath Sutton)
 (01777) 709 034 kath.sutton@bassetlaw.gov.uk
Bassetlaw District Hospital 01909 500 990
(non-emergency)
Bassetlaw Museum (01777) 713 749
Friends of Bassetlaw Museum fobm14@gmail.com
Clarbrough Gardening Club (01777) 707 811
Clarbrough & Welham IT Group (01777) 700 918
clarbroughwelham@gmail.com
 (also for Newsletter and website matters)
Clarbrough Parish Council (Office/Monday am only)
 (01777) 710 902 clarwelpc@yahoo.com
Parish Council Chairman (01777) 700 517
Clarbrough Primary School (01777) 708 065
office@clarbrough.notts.sch.uk
Clarbrough Village Hall bookings (phone or text)
cdcabookings@gmail.com 07530 532 185
Clarbrough Village Ventures (events. pantomime,etc)
 (01777) 705 877, (01777) 710 780
Clarbrough Womens' Institute 07967 191 007
Clumber Park 01909 544917
Crimestoppers anonymously/free 0800 555 111
Electricity Supply failure 0800 056 8090
 (Western Power Distribution)
Elizabethan Academy (01777) 713 700
Environment Agency (water pollution) 0800 80 70 60
Emergency Services (all) **999**
Fire Brigade (emergency) **999**
Food Bank (Retford - The Well) (01777) 702 344
Gas Leak? Call National Grid immediately: 0800 111 999
GP surgeries:
Bridgeway (01777) 702 381
Crown House (01777) 703 672
Tall Trees (01777) 702 381
Riverside (01777) 713 330
Healthwatch Nottinghamshire 0115 963 5179
Healthwatch Champion (Chris) (01777) 700 918
Idle Valley Nature Reserve (01777) 713 945
askidlevalley@nottswt.co.uk
IT Champions 01623 727 600
MP (John Mann) Constituency Office 01909 506 200
Nottinghamshire Archives 0115 958 1634
archives@nottsc.gov.uk
Nottinghamshire County Council 0300 500 80 80
Nottinghamshire Country Councillor (Liz Yates)
 (01777) 860 218 cllr.liz.yates@nottsc.gov.uk
Nottinghamshire Police & Crime Commissioner
 General enquiries 0115 9670 999 Ext. 801 2005

Nottinghamshire Womens' Aid 01909 533 610
PCSO Dave Airey 07525 226 838
(non-urgent, for information only)
Police (non-emergency 'official' contacts) 101
 (be prepared to give county and other location details)
Police (emergency) **Always 999**
Retford Bus Station – only via Notts. County Council!
Retford Carers Support Group 07793 268 235
Retford Leisure Centre (01777) 706 500
Retford Library (01777) 708 724
retford.library@nottsc.gov.uk
Retford Oaks Academy (01777) 861 618
Retford Post-16 Centre (01777) 861 400
office@retfordp16.org
Retford Train Station 0845 722 5333
Severn Trent Water (advice) 08456 016 016
Shelter (Here magazine) here@shelter.org.uk
Tuxford Academy (01777) 870 001
Tuxford Mine of Information (01777) 870 040
The Well (Retford Baptist Church) (01777) 702 344
admin@thewellrbc.org

Advertisers

2Men with a Van (01777) 702 779/ 0755 000 2242
Amlot Building (01777) 817 847 / 07712 349 177
Andi Gray Property Services 07837 370 827
Barrie Codling (01777) 705 396 / 07949 833 911
Brian Webb 01302 867 865
CSJ Canine Foods 07790 431 510
Focus Accounting 07525 867 684
Goachers 01427 880 341
J&J Electrical 07771 163 778
Kings Arms Public House (01777) 708 845
King Stores (village SPAR) (01777) 860 155
Lawn Cut (01777) 702 779/ 0755 000 2242
Lawn Master (01777) 248 377
North Notts Heating (01777) 701 668
North Notts Training 07855 751 689
RBM (01777) 704 823
ReNew (01777) 702 779/ 0755 000 2242
Retford Motor Spares (01777) 704 432
Rix Fuels (01777) 279 152
Signal Electronics (01777) 870 665 / 07889 833 410
Tony Halford (01777) 860 704 / 07976 941 407
Total Care Childminding 07795 116 731
Used (01777) 702 779/ 0755 000 2242
Vickis Ark 01427 881 162 / 07855 751 689
Watson Fuels 01302 759 798

ReNew
Carpet & Upholstery Cleaning

- High Powered Portable Equipment
- Commercial & Domestic Services
- Stain Removal / Reduction
- Satisfaction Guaranteed
- Dry in Hours NOT Days
- 'One Off' or Regular Cleans
- Fully Insured & Experienced
- CRB Checked Operators

Please Call Mob: **0755 000 2242**
 Tel: **0177 770 2779**

"The bitterness of poor quality service lingers long after the sweetness of price is forgotten"

Local History events at Retford Library

Zeppelins over Retford Talk by **Adrian Sumner**
Saturday, 28th May 2016, 13:00-14:00

This fascinating talk tells the story of Zeppelin raids in our area during World War 1, specifically covering the bombing of Retford 100 years ago this September.

As part of Retford Arts Festival (28th - 30th May 2016), **entry to the talk is free** but booking is advised – **please call Retford Library on (01777) 708 724 or email retford.library@nottsccl.gov.uk**

Local and Family History Drop-In Surgery at Retford Library. Need advice about researching family or local history? A Local Studies Librarian will be at **Retford Library** at **09:30 – 13:00** on **Thursdays 26th May, 30th June and 28th July.**

Why not drop in for a chat and find out more about the library's local and family history resources that could help with your research? **These drop-in sessions are free and no booking is required.**

Local History events at Worksop Library

Death at the Archives Wednesday 4th May, 14:00 £3.00

Stories of murder, dastardly deeds and spooky happenings from letters and diaries held at Nottinghamshire Archives. Enjoy tales of the macabre inspired by the county's history. For adults. Booking essential.

Discovering Stories of the Straw Family

Wednesday 18th May, 14:00 £3.00

Tucked away in a quiet Worksop street is the Straw family's house, last redecorated in 1923. Join Amanda Neilson from the National Trust for a fascinating introduction to the family and their home – revealing areas not normally on display. Booking essential.

To book your place on the above talks, please call Worksop Library on 01909 535 353 or email worksop.library@nottsccl.gov.uk

Law School

With warmer weather (!) now on the cards, PCSO Dave Airey's latest reports highlight house and car windows left open as key security risk. Also figuring in very recent local crimes are a number of thefts of garden features – often those made of metal.

Also worth noting are the ongoing development of Nottinghamshire's Neighbourhood Alert facility that keeps members aware of local crimes. This has recently added mobile text messages to the usual e-mail notifications.

To read Dave's full, monthly, reports go to our community website's **Law & Order ► Police Reports** page. This contain links to such services as Neighbourhood Alert – which is free – and much more that we have space to include here.



Home heating oil?
You're in safe hands

We are Watson Fuels - suppliers of heating oil and fuel to homes, farms and businesses across the country since 1957.

Doncaster 01302 759798

www.watsonfuels.co.uk



This is a message sent via East Bassetlaw on behalf of Nottinghamshire Police. Message sent by Samantha Hancock (Police, Crime Prevention Unit Manager, Nottinghamshire). Recent events around the world remind us all of the terrorist threat we face, which in the UK is considered as SEVERE, meaning an attack is highly likely. Police and security agencies are working tirelessly to protect the public but it is also important that communities remain vigilant and aware of how to protect themselves if the need arises.

The four minute film, **Stay Safe: Firearms and Weapons Attack** sets out three key steps for keeping safe. The film is accompanied by an online information leaflet. The film and leaflet advise that if you are caught up in an incident to 'run, hide and tell' - guidance which can be applied to many places and situations. Link to video and advice page : <http://www.npcc.police.uk/NPCCBusinessAreas/WeaponAttacksStaySafe.aspx>

The information above was posted on our community website before last Christmas; much other material including the Home Office's monthly reports along with District and County information and our own PCSO Dave Airey's monthly reports. Also included

within those pages are links to Neighbourhood Alert, your personal information flow regarding law-and-order issues in your local area – a free and invaluable tool for being aware.

Editor

Coming soon at Bassetlaw Museum

Farm & Country Festival is 25th & 26th June, 10:00-16:00 free admission. Crafts, children's activities, games, tractors & engines, BBQ, refreshments & ice-cream, plus - "meet a creature" with lizards, small furry things, snakes etc, for petting.

Curator, Sam, will host the Alternative Olimpiks to tie in with the Olympic Games, but with silly events e.g. race at watering the sheep using holey buckets. Hoping to have Raptor Rescue i.e. fed-up looking owls, but people like them. Of course the famous FoBM will be in attendance...



Friends of Bassetlaw Museum have two events in the near future that are open to all:

24th May: The History of Marshalls looking at the renowned company of Gainsborough (19:00)

29th June: Strawberries & Skittles – outdoor games and strawberries (18:30)
£1.50 for members, £3.00 non-members.

To book or for more information, contact the Museum at Amcott House, Grove Street, Retford DN22 6LD or (01777) 713 749 or fobm14@gmail.com

Your local Heating Oil & Oil boiler Servicing supplier



Heating Oil, K+ & Aga Cooker fuel

Order online or by phone

Oil Boiler and Aga Cooker Servicing

Wide range of fuel storage tanks

Local, fully trained, OFTEC qualified service engineers

Emergency break down assistance



Contact one of our friendly experts today for a free no obligation quote
call 01777 279152 | email sales@rix.co.uk | visit www.rix.co.uk

Election Scandal In East Retford

Nearly two hundred years ago disgraceful riot and corruption in the East Retford elections resulted in a Government Cabinet split and the creation of the new Bassetlaw constituency.

Between 1790 and 1830 the name of East Retford came to be associated nationally with scandal and corruption. This was because the borough had the right to elect two MPs, with the voters being drawn from barely two hundred 'freemen' who qualified by virtue of having been born there as oldest sons, or through some apprenticeships. Given that the numbers were small and the vote done in a public poll, it became common to pay the voters. The system was manipulated to the advantage of the voters and 'new voters' strictly controlled, although many who did vote came from London to do so – and were paid for the trip! East Retford was traditionally controlled by the Dukes of Newcastle who could get 'their man' elected by paying the local male electors. But the town was so corrupt even the Duke could not be sure – in the 1790s it was costing £4000 (£0.25m today) to get elected with barely 200 votes to pay for. In 1803 it was said votes cost 150 guineas each – over £5000 today. However in 1812 the Duke, who was a 'Tory', decided that the whole thing was becoming too expensive and this gave an opportunity for Earl Fitzwilliam to gain a political advantage for the Whigs. However we should not confuse the Whigs and Tories of those days with any political parties now; both were dominated by aristocrats with almost medieval views, and both used corrupt practices equally often.

That year Charles Marsh – unknown to almost everyone – was elected unopposed, but the verb 'to marsh' entered the dictionary meaning not to pay up on your promises! Even an election where there was no contest cost money – in 1820 the candidate William Evans paid out £4400 to his 210 supporters. Another phrase was to 'joss' – drinking at the candidates' expense, often available for weeks before an election!

By 1824 Newcastle was showing renewed interest and wanted to challenge Fitzwilliam's Whig control, especially as he had strong feelings about the sympathy the Whigs were showing to Roman Catholics. Fitzwilliam was tempted to use George Foljambe of Osberton as a candidate, but decided it was best NOT to have a local man: 'the less the good freemen of Retford see of their Member, the more he is in their favour.' He chose his own nephew, Sir Robert Dundas, and he had soon secured promises from 65 of the 94 freemen who lived in the town. Newcastle wondered about putting up £5000 to fund a candidate, but two of Retford's aldermen told him not to bother as it was all a 'done deal' already!

George Hudson, a returning officer in 1825-6, told it as it was: 'I should sit between the candidates, and I should have two large pockets, and them that put the most money in, I should vote for.'

Newcastle plainly decided that the 'pro-Catholic' Fitzwilliam Whig control had to cease. He helped form the 'True Blue Club' which met at the Turk's Head in Retford and brought in Sir Henry Wright Wilson as a prospective candidate. With the curate, Rev Joshua Brooks, they stirred up anti-Catholic feeling leading to some street violence in

December 1825 and the Riot Act being read twice. In February 1826 the Whig candidates were attacked in the street and Newcastle, who was Lord Lieutenant, did nothing to prevent it. In fact Fitzwilliam was well aware that the violence was stirred up by the Blues using 'a hired mob of the scum of the neighbourhood....the most abandoned characters about Retford.' The Whig Dundas had to hide in a Bank and Wilson arrived for polling in secret!

The 1826 election poll was held in public and fear was such that the Whig voters went together *en masse* – 123, or about 70% of the total. The two Whig candidates were attacked by the mob – it was clear they were going to win – and had to go into hiding while 150 Special Constables did nothing at all. Troops had to be brought in to calm things down.

As Wilson could not win, the True Blues brought a petition in alleging corruption. Finding the evidence was hardly difficult – 96 of 144 burgesses sold their votes – so both MPs were unseated and East Retford went a time without any. The Blues found many who could report that 20 guineas were handed out in special packages, but were then rather horrified to hear the suggestion that East Retford lose its MPs entirely – they would be transferred to Birmingham! A counter-proposal that a new Bassetlaw constituency be created caused a split between Huskisson and Peel in the Government.

In the end East Retford was merged into a new and larger Bassetlaw electorate although still called 'East Retford'; there were 210 freeman voters and 2000 freeholders – who were liable to be 'influenced' by the local gentry. But this did not end the corruption; in 1830 Newcastle supported Arthur Duncombe and paid out about £4500 to get him elected, including providing a day's coursing on the Clumber estate for the voters. As Duncombe lost his seat in 1831, this was hardly money well spent!

Adrian Gray

Editors notes: East Retford's corruption contributed to the 'Great Reform Act' of 1832 which started the widening of voting rights and secret ballots. If you are interested, the following links explore these aspect of UK history:

http://www.nationalarchives.gov.uk/pathways/citizenship/struggle_democracy/getting_vote.htm

For the place of East Retford in the run-up to the Great Reform Act (1832) see:

https://en.wikipedia.org/wiki/East_Retford_%28UK_Parliament_constituency%29

LAWNMOWERS

Tony Halford



**Plant & Grass
Machinery
Specialist**

36 Albert Road, Retford, Notts. DN22 6JB

Tel: (01777) 860 704

Mob: 07976 941 407

Animal-quiz questions

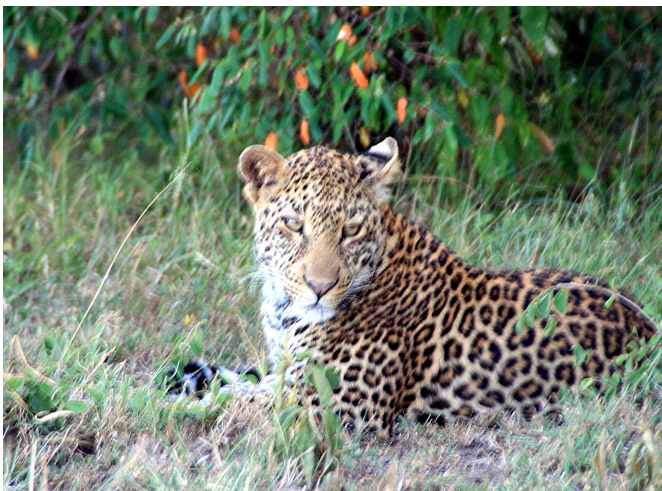
How is your wildlife knowledge? Try these questions – answers will be published in our next issue.
All photos © Greg Herdman 2016.



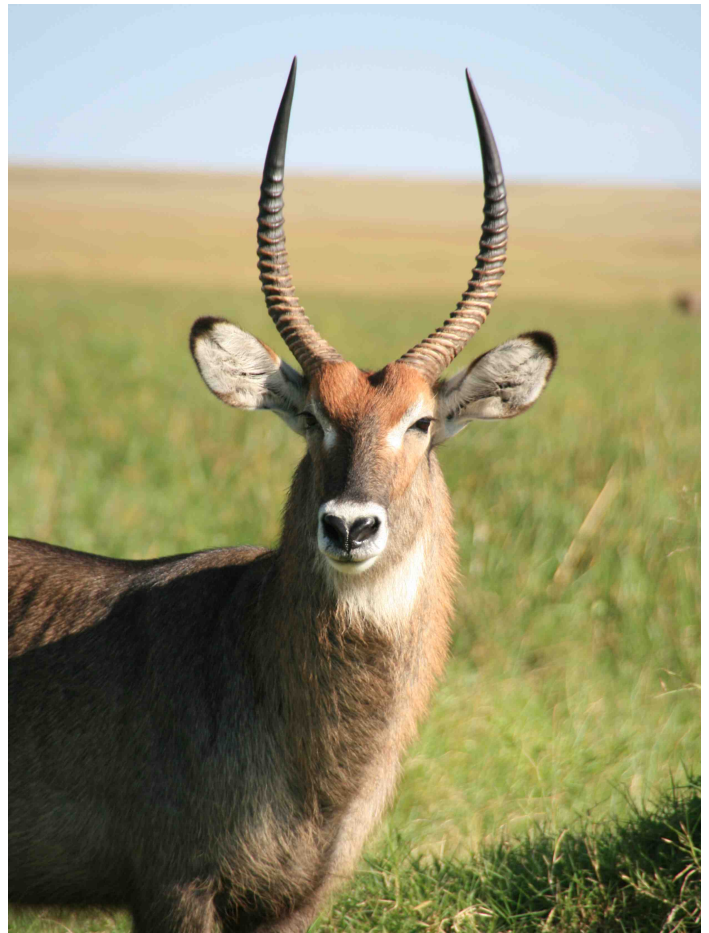
- 1.. It's a giraffe, but Is this a male or female?
- 2.. How long is a new-born giraffe?
a) 18 inches b) 2 feet c) Four feet.



3. This elephant is keeping cool by throwing mud over its back but can you see the newborn baby too?
How heavy is a newborn African Elephant?
a) 20kg b) 30kg c) 40kg



- 4.. People often confuse Leopards and Cheetahs, particularly when laying down like this
Is this a leopard or a cheetah?
- 5.. Which one of these two big cats' claws are basically different to those of your pet moggy?



- 6.. This fine fella is a...
a) Waterbuck, b) Thomson's gazelle c) Impala

Goacher's Farm Shop

Wood Lane,
North Wheatley near Retford

Traditionally grown fruit; picked & PYO
**Strawberries, Raspberries, Cherries,
Plums, Apples, Pears etc**

Taste the difference!

Fresh and frozen



Also available;

**Asparagus, Turkeys, Honey, Jams,
Eggs, Chutneys, Dexter Beef, Juices,
Home baking & Vegetables**



Now serving hot drinks

For opening times please
Phone; **01427 880 341**
or **www.goforgoachers.co.uk**

Elections – some history

Voting seems to be something we are asked to do pretty regularly, and particularly just now. Police & Crime commissioner (5th May) and European Referendum (23rd June) elections are almost upon us! But how has our voting system developed, and is it fit-for-purpose in the 21st century? First, a bit of history.

Voting rights before 1832

In early-19th-century Britain very few people had the right to vote. A survey conducted in 1780 revealed that the electorate in England and Wales consisted of just 214,000 people - less than 3% of the total population of approximately 8 million. In Scotland the electorate was even smaller: in 1831 a mere 4,500 men, out of a population of more than 2.6 million people, were entitled to vote in parliamentary elections. Large industrial cities like Leeds, Birmingham and Manchester did not have a single MP between them, whereas 'rotten boroughs' such as Dunwich in Suffolk (which had a population of 32 in 1831) were still sending two MPs to Westminster. The British electoral system was unrepresentative and outdated.

Pressure for reform

During the late 18th century and the early 19th century, pressure for parliamentary reform grew rapidly. Some of it came from men who already had a large say in how Britain was run: country gentlemen angry about the use of patronage at Westminster, or manufacturers and businessmen keen to win political influence to match their economic power. However, the issue of parliamentary reform reached a wider audience, particularly after the **French Revolution**. Influenced by works such as Thomas Paine's *Rights of Man* (1791-2), radical reformers demanded that all men be given the right to vote. Reform groups such as the Sheffield Corresponding Society (founded in December 1791) and the London Corresponding Society (founded in January 1791) were committed to universal 'manhood' (i.e. adult male) suffrage.

Two decades later, the radical public speaker Henry Hunt spoke at numerous political meetings on the same theme. During August 1819, at one such gathering in St Peter's Field, Manchester, local yeomanry attacked the crowd, killing 11 people. After the 'Peterloo Massacre', as this incident became known in radical circles, the government passed a series of repressive measures, and parliamentary reform still seemed a distant prospect.

The Reform Acts

The three parliamentary reform Acts introduced in 19th-century Britain (1832, 1867 and 1884 respectively) satisfied moderate reformers rather than radicals. The Prime Minister, Lord Grey, supported reform to 'prevent the necessity of revolution' and was responsible for the first (or 'Great') Reform Act of 1832. However, the Act gave the vote in towns only to men who occupied property with an annual value of £10, which excluded six adult males out of seven from the voting process.

The Tory politician Lord Derby described the second Reform Act (1867) as 'a leap in the dark'. And yet only two in every five Englishmen had the vote in 1870. Even the third Reform Act (1884) - which enfranchised all male

house owners in both urban and rural areas and added 6 million people to the voting registers - fell some way short of introducing universal manhood suffrage.

Campaigns for universal suffrage

Radical reformers pressed for more extensive parliamentary reform throughout the 19th century. The six-point programme of the Chartists included demands for universal suffrage, annual parliaments, and voting by secret ballot. During the 1830s and 1840s, when Chartism was at its most influential, meetings to discuss 'constitutional reform' took place in towns and cities across Britain.

In the mid 1860s the Reform League - though less clearly committed to universal suffrage than the Chartists had been - also mobilised support outside Parliament for electoral reform. Throughout this period, election campaigns were sometimes disrupted by unrest and rioting.

Conclusions

For many people, 19th-century parliamentary reform was a disappointment because political power was still left in the hands of the aristocracy and the middle classes. Universal suffrage, with voting rights for women (though not for those under 30), did not arrive in Britain until February 1918. By the time of the third Reform Act in 1884, Britain was less democratic than many other countries in Europe. The changes made in the British political system between 1832 and 1884 were nevertheless important. The electorate increased substantially in size from approximately 366,000 in England and Wales in 1831 to slightly fewer than 8 million in 1885. Parliamentary seats were redistributed to give greater weight to larger towns and cities. Also, the Ballot Act of 1872, which introduced secret ballots, made it far more difficult for voters to be bribed or intimidated.

Moreover, Britain - unlike much of continental Europe in the 19th century - managed to introduce reform without revolution. This achievement contributed greatly to Britain's political stability in the 20th century.

Whether Britain's current 'first-past-the-post' or 'winner takes all' system provides the best democratic representation remains an open question. Discussions of proportional representation continue but, as yet, haven't really gained much momentum.

Editor

Source:

http://www.nationalarchives.gov.uk/pathways/citizenship/st_ruggle_democracy/getting_vote.htm

For the place of East Retford in the run-up to the Great Reform Act (1832) see:

https://en.wikipedia.org/wiki/East_Retford_%28UK_Parliament_constituency%29

At their recent AGM, Clarborough & District W.I. re-appointed all of their officials. The full listing can be found on our community website.

Meetings take place on the second Monday of each month at Clarborough Village Hall at 19:00 for 19:30 start. New members welcome.



Completion of Clarborough Village Hall Refurbishment

The Village Hall management committee is pleased to announce completion of Phase II of Hall refurbishment. Work carried out during this phase included complete replacement of soffits, fascias, rainwater guttering and downpipes to the perimeter of the building and a replacement emergency fire exit door. In addition, new stage curtains and rope-operated curtain track have also been installed, along with new window and door curtains. Three new energy efficient hand dryers have also been fitted in the toilets.

Completion of the above repairs to the fabric of the building and internal improvements has helped to meet committee objectives of ensuring the long term viability of the Hall, while at the same time providing a more attractive and welcoming venue for all users. To date, feedback from user groups regarding the refurbishment has been 100% positive and we are pleased that this vital facility continues to make a real difference to all those who use it, as well as the wider community. We are extremely grateful to WREN for providing part funding. A project of this nature has inevitably caused slight disruption to the Hall timetable so we would like to thank all user groups for their patience during the course of work.

Part funded to the tune of £14,000 from WREN's FCC Community Action Fund, the project would not have been possible without their support. The remaining costs of around £7,000 to complete both phases were financed from CDCA own funds.

The committee's sights are now focused on Phase III

which will concentrate on the upgrade of the existing fire safety and alarm systems, costs for which will be met



entirely by the CDCA. We are pleased to report that this final phase is already underway and completion is envisaged by July 2016. The Treasurer would like to thank all members of the Hall management committee for their help and support during completion of all three phases of work.

WREN is a "not for profit" business that awards grants for community, biodiversity and heritage projects from funds donated by FCC Environmental through the Landfill Communities Fund.

George Armstrong
Hon Treasurer CDCA



- INTERIOR & EXTERIOR
- QUALITY PAPER HANGING
- DOMESTIC & COMMERCIAL
- QUICK & QUALITY TURNAROUND ON RENTAL PROPERTIES

07837 370827

andigraypropertyservices@hotmail.co.uk

A LOCAL TRADESMAN ON YOUR DOORSTEP

A professional service to a high standard





Bassetlaw
DISTRICT COUNCIL
— North Nottinghamshire —

Queen's Buildings, Potter Street, Worksop, Notts S80 2AH
Tel: (01909) 533448

PRESS RELEASE

Contact: Jonathan Brassington - Communications Manager

Tel: 01909 533448

Date: 17/03/2016

Ref: 02105

Bassetlaw District Council to apply for Full Membership of Sheffield City Region

Bassetlaw District Council will apply to join a devolution deal with Sheffield City Region that could deliver millions of pounds of investment and hundreds of job opportunities to North Nottinghamshire.

The devolution deal will see powers and responsibilities devolved from central government to a more local level. This includes powers and funding to deal with issues such as housing, skills and training, business support and transport.

At an Extraordinary Meeting on Thursday 17th March 2016, Bassetlaw Councillors voted to apply for full constituent membership of the Sheffield City Region (SCR) combined authority and non-constituent membership of any future North Midlands (Nottinghamshire/Derbyshire) arrangement. Councillors also voted to ratify the Sheffield City Region Devolution Agreement.

Bassetlaw District Council will continue to be part of Nottinghamshire and retain control of all the services that it is currently responsible for.

The additional devolved powers will be managed by a combined authority, which is made up of a group of councils, and will be led by an elected mayor. Bassetlaw is applying for an equal seat at the table of the Sheffield City Region Combined Authority alongside Sheffield, Barnsley, Rotherham and Doncaster councils, as well as Chesterfield Borough Council who have also recently voted to apply for full constituent membership.

The decision by Bassetlaw's councillors starts a process that will include a full period of public consultation under the guidance of the Department for Communities and Local Government, ahead of the Secretary of State making the final decision. This is likely to be towards the end of 2016.

Cllr Simon Greaves, Leader of Bassetlaw District Council, said:

"Applying for full constituent membership of the Sheffield City Region is an economic decision that I firmly believe is in the best interests of the whole of our District. This isn't about Council services or leaving Nottinghamshire, it's about investment, it's about job opportunities and it's about growing our economy in a sustainable manner.

As a full constituent member of the Sheffield City Region we can have an equal seat at the table and make sure that Bassetlaw's voice is heard. This is the first devolution deal that is on the table, is available, and is ready to go. As we've seen in Manchester, devolution can keep evolving so it's vital that we continue to play a role in getting the best deal from Government for the City Region and for Bassetlaw.

We will continue to work closely with, and receive services from, our partners at Nottinghamshire County Council and will continue to play a role as a non-constituent member of any future North Midlands combined authority."

[ENDS]

- The vote was recorded at the Extraordinary Council Meeting on Thursday 17th March 2016 was 29 in favour of the recommendations and 11 against.
- A full copy of the report can be viewed on the Council's Open Data website <http://data.bassetlaw.gov.uk/>
- The Sheffield City Region combined authority has already agreed a devolution deal with the Government which would include an additional £900 million of funding to the city region over 30 years. The deal also covers a range of themes including skills and employment, housing, planning and public assets, innovation, advanced manufacturing and business growth and transport.

Original document received via BCVS on 23 March 2016

Editor's note: The above press release was received, as noted above, immediately after the Extraordinary Meeting of Bassetlaw District Council held on 17th March, 2016.

District Councillor Kath Sutton's report appears on page 6.

Our Nottinghamshire County Councillor, Liz Yates, has provided us with her thoughts on the above announcement which appears on the facing page.

This is clearly an topic of some importance.



County Councillor Liz Yates' Report

The 'hot' topic at the moment is Devolution. Most parish councils have been watching what our councils have been proposing for some time now, but the issue has reached a point within Bassetlaw that not many people expected. I will try and explain.

National Government has been devolving powers to councils across the country for some time to provide better economies of scale in difficult financial times. District, Borough, Unitary and County Councils come together as a Combined Authority (CA) to work together and share services. The proposed model for Nottinghamshire is in the North Midlands CA made up of Derby City, Derbyshire County, Nottingham City, Nottinghamshire County plus all Districts and Borough Councils within those counties.

This has not been without problems as some councils have pulled out of the plan – not least Bassetlaw, who up to a short time ago was looking at membership of the North Midlands CA and non-constituent membership of the Sheffield City Region CA (SCRCA). The Press Release on the facing page outlines recent developments.

You may ask "what does that mean to me?" Without being political I will try to explain the implications. There is no better example than Transport because in our very rural areas in the county buses are important to many. Our bus network is subsidised with funding made available to the County Council, and Bassetlaw has the largest amount of all the districts. If Bassetlaw's application to join the SCRCA is accepted, this money would be 'conferred' to Bassetlaw who, because they are not a transport authority, would have to pass the funding to the SCRCA and its elected mayor, to decide how best this money is spent. The concerns that have been raised with me is that currently the SCRCA has a population of around 1.79m, Bassetlaw has somewhere over 100,000, so how is Bassetlaw going to be prioritised over a region that is made up of Sheffield City, Rotherham, Barnsley and Doncaster? I don't know the answer to that but I do understand the concerns of many who have spoken to me.

Before any of the above can happen the Secretary of State deems that a public consultation must take place. When this was the case in the SCRCA, just 245 people responded, just 0.0136% of the electorate! Many of us feel strongly that this is not democracy; therefore a petition is being raised, requesting Bassetlaw District Council to hold a referendum to give its residents their say. Over the next few weeks many people will be asking for petition support.

I am always available to discuss issues with you, either the above or any matters of concern to you.

Please contact me on (01777) 860 219 or email at cllr.liz.yates@nottsc.gov.uk

Liz Yates

Parish Council Pointers

Clarborough & Welham now have a Footpath Warden. Howard Oakes from Hayton is taking on the role on a regular basis. He recently completed his first survey of

Footpaths, Bridleways, Signposts, Styles etc, & reported problems to Parish & County Councils.

Council Vacancy: Fancy getting involved and making a difference? A Parish Council vacancy is coming. Contact Parish Council Clerk Wendy Davies if you are interested on (01777) 710 902 or 07503 618 512

Looking for a Logo: The parish council are looking for a suitable design for a Parish logo. Both Junior & Senior schools may be invited to submit their ideas.

Driveway improvements: By the time you read this, further improvements to the Village hall driveway should have been completed. Additional widening is being carried out to make access easier.

Barrie Codling
Clarborough & Welham Parish Councillor

Clarborough & Welham Parish Council Meetings

9th May Annual Parish Council Meeting
20th June
25th July

Meetings open 19:00 in Clarborough Village Hall

Agendas are always posted at least a week in advance on notice boards and on our community website where you will also find approved Minutes

Parish Council Office (Village Hall) is open on Monday mornings (excluding Bank Holidays), so do drop in for advice or to make comments on any local issues.

Retford Amateur Operatic Society
A NODA AWARD WINNING SOCIETY

noda
Be inspired by amateur theatre

ANYTHING GOES

(Beaumont)
music and lyrics by Cole Porter

Evening Performances
7.30pm
Saturday Matinee
2.30pm

Tickets from £11

Box Office:
01777 706 866
or open daily
10am - 2pm

Original Book by
P.G. WODEHOUSE &
GUY BOLTON
New Book by
TIMOTHY CROUSE &
JOHN WEIDMAN and
HOWARD LINDSAY
& RUSSEL CROUSE

5th - 7th May 2016
The Majestic Theatre, Retford

By arrangement
with MusicScope
& Stage Musicals
Limited of
New York

MusicScope
Productions Ltd

ORIGINALLY PRODUCED BY LINCOLN CENTRE THEATRE, NEW YORK

Lunch meal deal

£2.75



any **1**
featured Selected
SPAR sandwiches
freshly made in-store



any **1**
Coca Cola/Diet/Cherry Coke
500ml or Sprite 500ml or
SPAR Water 500ml
or Oasis 500ml



any **1**
Walkers Crisps 32.5g
or Bounty, Double Decker,
Twix, Mars or Snickers
(Standard Size)

See individual shelf edge label for single price

SPAR  *There for you*



Bassetlaw Community Minibus – Day Trips

Our minibus is fully wheelchair accessible and picks up from your home across Bassetlaw. Prices shown are per person. For bookings or information please contact Bassetlaw Action Centre on 01777 709 650, email enquiries@actioncentre.org.uk or visit www.bassetlawactioncentre.org.uk

- **Skegness** - £16.50 - Wednesday 4th May
- **Lincoln** - £11.50 - Tuesday 10th May
- **Whitby** - £26.00 - Tuesday 17th May
- **Crystal Peaks Shopping Centre and Retail Park** - £11.00 - Friday 27th May
- **Scarborough** - £22.00 - Monday 6th June
- **Marshall's Yard and Retford and Gainsborough Garden Centre** - £10.00 - Wednesday 8th June
- **Yorkshire Wildlife Park** – Doncaster - £11.00 - Friday 17th June (Price does not include admission)
- **Mablethorpe** - £17.50 - Tuesday 21st June
- **Bridlington** - £19.50 - Tuesday 28th June

Bassetlaw Action Centre – Volunteering Opportunities

Bassetlaw Action Centre has a range of volunteering opportunities available across Bassetlaw

Please contact us on 01777 709 650, email enquiries@actioncentre.org.uk or visit our website for more information www.bassetlawactioncentre.org.uk

- Befriender
- Driver - Car Scheme
- Driver - Minibus
- Driver - Accessible MPV
- Staying Well Programme Tutors
- Administration Volunteers

Human history becomes more and more a race between education and catastrophe.

H.G.Wells (1866-1946) *The Outline of History*

Nottinghamshire's libraries and cultural services

From April 2016, Nottinghamshire County Council 'hived off' its library and related services following an announcement back in November 2015. Rather than repeat what you have probably already seen in the 2016 issue of *Nottinghamshire's County Life* magazine we will simply remind you that in many ways your experience of Nottinghamshire Libraries and also Nottinghamshire Archives will initially be unchanged. We would, however, suggest you drop into your Retford Library to have your library card updated to the new, smart, logo.

Not got a library card?

You may not realise what you're missing!

As 'front man' – leader

is too strong a word for my

role – for Retford Library's Family and Local History Group I can assure you that a library card is almost worth its weight in gold. This is because Nottinghamshire Libraries have free access for card holders to a range of online family history resources, most notable among these is free access to Ancestry.com's databases from within the library. An individual subscription to this service would set you back some £150 per year if you subscribed personally – so get on board!

We should note here that Family History Group meetings take place 17:00-19:00 on the second and fourth Monday of each month (Bank Holidays and August excepted). They are FREE, so just drop in.

To explore in more detail Inspire's services see their website: www.inspireculture.org.uk



Editor

Get all the latest news

With only 24 pages, our Newsletter is totally incapable of keeping you abreast of all the news. On the other hand, our community website (www.clarlborough-welham.org.uk) with its 150+ pages has information from a vast array of services, groups and organisations.

Our website is kept up-to-date very regularly. If you need help in accessing online services then do consider using Retford Library (it's free and staff are always there to help) or, maybe, joining a Clarlborough & Welham IT Group class to learn how to use the internet effectively.

Editor

Totalcare Childminding Services

Julie Quanbrough, Ofsted Registered Childminder

Caring for ages 0-11 years

- **Experience with autism and special needs using Makaton signing and PECS symbols**
- **Opening hours 0800-1800. Available out of these hours, please contact to discuss.**
- **School drop off/collections for Clarlborough Primary School**

Tel: 07795 116 731 Email: totalcarechildminding@live.co.uk

Business page: www.facebook.com/totalcarechildminding



Go away with peace of mind that both your pets
and home are in safe hands



VICKIS ARK

Animal Nannying Service



Member of the National Association of Registered Petsitters
Any animal, large or small, domestic or exotic, daily visits, housesitting,
proficient horsewoman.



Contact: Vicki Wilson
Tel: 01427 881 162 Mobile: 07855 751 689
E-mail: vkwilson1@yahoo.co.uk
www.vickisark.co.uk

Est. since 1994 Refs available. Reasonable rates.

Barrie Codling Photography

- ◆ Stylish photography by a trusted professional
- ◆ All budgets catered for
- ◆ Locally based
- ◆ Wedding & other photographic services



Tel.: (01777) 705 396 Mob.: 07949 833 911

e-mail: barriecodlingpics@gmail.com

Beautiful lawns at affordable prices

Lawnmaster®
professional lawn care

ASK FOR A
FREE
LAWN
ANALYSIS



Your lawn, our
expertise...
perfect!

SEE RESULTS IN JUST
10 DAYS

Tailored lawn treatment plans are available
to improve your lawns all year round.

For a FREE quotation call
Tel: 01777 248377
www.lawnmaster.co.uk

Or just text
'lawn'
and your postcode
to 60777
and we will call you.



BASSETLAW CHRISTIAN HERITAGE

May 7th & 8th, (11:00 – 16:00) St Helena's Church,
Austerfield: Open Church Weekend, as part of the
Doncaster Heritage Festival, including a Bassetlaw
Christian Heritage exhibition on Richard Clyfton and the
Separatists - talk by author and local historian, Adrian Gray
on Sunday May 8th at 14:00..

May 14th - Pilgrims & Prophets Clyfton Tour: pick-ups from
The Crossing in Worksop and The Well in Retford. **Still a
few places available.** Marking 400 years since the death
of 'the Father of the Pilgrims'. Richard Clyfton was first
leader of the 'Mayflower' Pilgrims congregation, Pastor of
Bassetlaw churches at Marnham and Babworth, One of
the first to 'separate' from the Church of England, Leader
of the Scrooby congregation and Effective founder of the
Congregational tradition.

Reservations: contact Adrian Gray (07470 366 689 or
Adriangray@pilgrimsandprophets.co.uk) or Rev Geoffrey
Clarke at The Crossing, Worksop. Cheques can be made
out to 'Pilgrims & Prophets Christian Heritage Tours' and
sent c/o The Well, Hospital Road, Retford DN22 7BD

May 14th & 15th, United Reformed Church, Gainsborough:
Open Church Weekend with organ recitals as part of the
West Lindsey Churches Festival - including Bassetlaw
Christian Heritage exhibition on Richard Clyfton and the
Separatists.

May 28th, 29th and 30th, (10:00 – 16:00) All Saint's Parish
Church, Babworth: Open Church Weekend as part of the
Retford Arts Festival - exhibition of paintings by local artist
Gerry Fruin and a Bassetlaw Christian Heritage exhibition
on Richard Clyfton and the Separatists.

May 28th, St Swithun's Parish Church, Retford: talk by
author and local historian, Adrian Gray on 'Retford's
Christian Heritage' Starts 11:00.

Rick Brand

Clarborough Church refurbishment

The refurbishment at church continues apace. Underfloor
heating is now installed and has been switched on to help
dry the building out. French drain along the north wall is
working well, drawing moisture from the stonework. The
septic tank for the, soon to be installed, toilet is in and the
paths relaid with tarmac, lighting installed along the
pathways and electricians are now bringing lighting up to
date with more efficient, cost effective fittings. We have a
lovely large space inside the building which will be perfect
for use for all sorts of different events and occasions. The
next phase will be the joinery and decoration followed by
tiles for the new floor and installation of our new bells.

**26th June (Church Patronal Day) we are having cream
teas and a 'messy church' for children, giving all the
opportunity to come and look round. Then the 'official'
opening date is the weekend of 30th & 31st July.**

Sara Hardie

Why might I benefit from becoming a volunteer?

So often, the focus on volunteering is, quite naturally, on the benefits to the organisation seeking volunteers. With the current Government's focus apparently aimed at reducing the size and scope of the public sector, these organisations are quite naturally looking for 'hands-to-the-pump'.

However, what is less common is consideration of benefits to individuals volunteering. Let me explain, as one who has become progressively more and more involved in this 'third sector' scene.

Firstly, a flippant reason – it's better than daytime television! Actually, this isn't quite a flippant as it seems because **the** biggest paybacks from volunteering are social contacts – meeting people, developing friendships – and learning new skills; something sitting in front of a tv quickly erodes.

The voluntary or *third sector* is fundamentally a not-for-profit category – it does employ, have management structures, do marketing and much of the rest of what we would recognise as 'business' focus, it just doesn't make profits for shareholders, directors and the likes.

So why might anyone want to volunteer? Let's explore a few local examples:

Clarborough & Welham IT Group are established providers of computer-based learning who have developed a team of volunteer tutors to support class members. An example might be someone who has seen their children through primary school and now Mum or Dad find that they have been out of the employment market for (say) more than a decade. Skills wither, confidence in a bustling workplace evaporate and items on a CV become dated. A five-week block or two surrounded by ex-teachers and other professionals in the team as well as contact with lively classes can do wonders for skills, self-confidence – and also something new in a CV. This is but one local example of what might be a surprising reason to volunteer.

Another important source of volunteers is those who have recently retired. This group often find leaving an employment environment difficult in that they feel a need to be 'doing something' (it's that daytime tv again!) and also making use of their lifetime of skill and knowledge. So many organisations are now looking for just these sorts of skilled individuals that almost anything is possible. As the third sector has grown and become more important to society at large, the sector has structured itself locally and also on a larger scale. Two of the biggest and most influential organisation in our area are **Bassetlaw Action Centre** and **Bassetlaw Community and Voluntary Service** (BCVS).

Both have information on their websites and staff in their offices to advise and guide anyone who thinks that they

may have something to offer – whether it's an hour or two a week or something much more substantial. So, why not get in touch with:



Bassetlaw Action Centre, Canal Street Retford, DN22 6EZ

Telephone: (01777) 709 650

www.bassetlawactioncentre.org.uk/

and:



The Old Abbey School, Priorswell Road
Worksop S80 2BU

Telephone: 01909 476 118

www.bcvs.org.uk/

For more links and thoughts on the whole topic of volunteering, see our community website's **Voluntary Sector links** pages.

Editor

The truth is rarely pure, and never simple.

Oscar Wilde (1854-1900) Anglo-Irish playwright & poet



"Focusing on your needs"

FREE CONSULTATIONS AVAILABLE

Our aim is to provide an efficient and cost effective service tailored to suit your needs.

Some of our services include:

Annual Accounts
Management Accounts
Corporation Tax
Payroll and Book Keeping
Self Assessment
VAT Returns

Claire Weingaertner

07525 867 684

Claire@focusaccounting.co.uk

www.focusaccounting.co.uk

aat

2016 Newsletter deadlines
18th July (Autumn issue)
17th October (Winter issue)



Her Majesty Queen Elizabeth II 90th Birthday celebrations

**Clarborough & Welham Parish
Council**



Saturday 11th June 14:00-17:00

in and around Clarborough Village Hall

make a picnic of it and enjoy the family fun.



Clarborough & Welham Parish Council's plans for a family-focused celebration of Her Majesty's 90th Birthday are moving apace. Planned for Saturday 11th June in and around Clarborough Village Hall, the event will include refreshments and wide range of entertainments with a particular focus on children of Primary School ages who* will receive a free 'picnic pack' and also free ice cream and soft drinks.

The rest of the family don't have to go without either! Clarborough & District W.I. and several other providers will on hand to provide tea, coffee, soft drinks, cakes, hot dogs and ice creams for purchase, so no one will go without!

*Free 'goodies' will depend on completion of a booking form which will be available from Clarborough Primary School (for all of their pupils) and from Clarborough's

SPAR Store for pupils who attend other Primary Schools. Completed forms (closing date 1st June) can be returned either to school or SPAR.

Dates for your Diary

9th May Clarborough & Welham Parish Meeting
15-22 May Scarecrow Competition
22nd May Clarborough Festival
28-30 May Retford Arts Festival
14-15 June Clarborough & Welham IT Group's last block of classes starts before the summer break
25-26 June Bassetlaw Museum's Farm & Country Festival
25th July Nottinghamshire schools end of term
6th September Nottinghamshire schools re-open
20-21 September Clarborough & Welham IT Group's classes resume after the summer break.

Newsletter Advertising rates (for 4 consecutive issues)

Full page	£110.00
Half page	£65.00
Quarter page	£35.00
This size	£18.00

Contact Val (01777) 708 181

Special rates for 'one off' insertions

Yet again, our greatest thanks go to our tireless (!) team of volunteer distributors.

Contact your Editor

E-mail from Elaine Cherrill (14 March 2016)

Hi Greg. I was walking past the abandoned school yesterday and noticed activity in a bees nest on one of the school's windows. I've attached a pic (see right). I wondered if this might be of interest for the magazine. last autumn, the window had been boarded up and then reopened, revealing the nest. loads of honey flowed out!

