

# Clarbrough & Welham

Newsletter  
Spring 2019

Super-fast  
fibre  
broadband is  
here!

More on rural  
Notts progress on  
page 7.

1914-1918  
Remembered

Clarbrough &  
Welham's  
Remembrance  
pages 12 & 13



Bassetlaw ACTION Centre

1914 - 1918

Clarbrough & Welham Parish  
Remembered



Your community website: [www.clarbrough-welham.org.uk](http://www.clarbrough-welham.org.uk)



## Contents:

### Forthcoming Events

Bassetlaw Fairtrade Fortnight	5
Bassetlaw Action Centre Staying Well	24
'Barnum' at the Majestic Theatre	20
Idle Valley Reserve – Call for the Wild!	24
Local Novel Writing course	24
Retford Library Family & Local History	6
Retford Business Forum	6
Workshop Priory Afternoon Visits	20

### Local Groups

Clarborough & Welham Allotment Association	22
Clarborough & Welham IT Group	6 & 9
Clarborough & District W.I.	11
Clarborough Village Hall Bookings	23

### History

Origins of our Calendars	16
Dates to remember	15

### Online

Fibre Broadband has arrived	7
Check your broadband speeds	17

### News

1914-1918 Community Remembrance	12 & 13
Annual sitting of Youth Parliament	5
Bassetlaw District Councillor Kath Sutton	15
Better Broadband for us	7
Bassetlaw Action Centre's big award	19
Clarborough & District W.I. news	11
Clarborough Primary School latest news	9
Chesterfield Canal Keeping Ship-shape	14
Dear soldier – a young persons letter	11
Hot baths improve metabolism	21
Letters to the Editor	6
Must Read: what will the world be like when current Primary School pupils grow up?	17
New Year's Resolutions: Benefits of Volunteering	21
Nottinghamshire Healthy Families Programme	22
Save on Childcare fees	18
Notts. County Councillor Tracey Taylor	18
Visiting Parliament	5

### Law & Order

Police & Crime Commissioner	19
Important Contact details	23

Editor: Greg Herdman (01777) 700 918 or clarboroughwelham@gmail.com

Advertising: Val Waring (01777) 708 181

Contents subject to Copyright © 2019

Front page *Yellow spring chickens* by EasterStockPhotos.com is licensed under a Creative Commons Attribution 3.0 Unported License.



Produced by Clarborough & Welham IT Group with generous support from Clarborough & Welham Parish Council and distributed by our tireless team of volunteers.

Material published in this Newsletter does not necessarily represent opinions of the Editors. Material submitted without full contact details will not be published. All publication decisions remain the responsibility of the Editor alone.

## From the Editor



Online security is an increasingly common topic that crops up in *Gardeners' Question time* that starts every session of our IT classes in Clarborough & Welham IT Group. It may well be sensible to reiterate a few of the key tips that have been considered recently.

The first is checking that website pages that require users to input personal data – such as the **check-out** pages on online shopping or banking sites are secure.

Before entering any personal data on such pages, take a look at the top-of-page website address strip. This usually starts with **http://** but site pages dealing with security sensitive information should start with **https://** the 's' is crucial showing that any data entered on the page will be security encrypted\*. If the page you are about to enter sensitive data such as card details into lacks the 's' get out immediately! All legal, security conscious providers such as passport application, driving licence renewal, online banking will be so equipped. If you come across suspect sites contact CrimeStoppers (see page 19).

Another topic that has been covered by PCSO Dave Airey in his monthly *Reports* is guarding against house break-ins by advertising when your house is empty. With the rise of social media many people make use of these services to send messages back home from holidays. These

messages can all-too-easily leak out into unexpected quarters and flag up your house's emptiness.

Image: kalhh/pixabay.com/CC0 Creative Commons

Recent discussions with several locals had reminded me that I need, once again, to emphasise how much local information is to be found on your community website (see front page). Not only does this give an up-to-date Met Office weather forecast from our home page but lots of other important local information or contacts are also provided. Your Parish Council's meeting agendas together with approved Minutes of previous meetings are also provided on our website.

Recently we have learned of possible criminal activity in the car park behind Clarborough Village Hall. Two cars were unlocked and windows opened by criminals using so-called **relay attacks**. These use electronics to intercept the signals for keyless entry systems. Specialist advice shows that keeping your keys in a metal container or what are known as **Faraday wallets** (try Amazon!) makes your keys invisible to attackers.

**\*Note:** For the Geeks amongst us, **http** standard for **hypertext transfer protocol** – the foundation for information communications across the World Wide Web – what we know as the internet.



# Fairways Developments

## Household & Garden Services

**T: 01777 860 665    M: 07889 833410**

Special Rates Available for Senior Citizens



## Domestic & Commercial

Proprietor: P. Stringer

**Tree Felling, Removal & Pruning**

**Lawns, Hedges & Borders**

**Fencing, Gates & Posts  
Erected & Repaired**

**Small Groundwork Projects**

**Pond Projects**

**Patios, Paths & Slabs Laid  
& Maintained**

**Driveways Cleaned & Jetwashed**

**Gutters Cleared & Repaired**

**Conservatories Maintained  
& Small Garden Buildings Erected**

**Leaves Cleared & Winter  
Maintenance Carried Out**

**CALL TODAY FOR A COMPETITIVE QUOTE  
AND A PROFESSIONAL SERVICE**

**01777 870 665 . 07889 833410**

**FREE CALLOUT . FREE SITE SURVEY . FREE ADVICE**

**If you would be happy with this level of service reward us with the job**





# Trust us with your mower

## Our Promise

We don't sell mowers in boxes

We check all machines prior to delivery

Then we deliver, instruct and install personally.

**And we do all of this at a great price!**



## We also offer professional Lawnmower Servicing

Engine serviced, Deck removed and cleaned, Blades sharpened,  
Belts checked, Discussion of any faults before re-assembly.

**From only £75.00 for a walk behind  
or £195.00 for a ride-on  
(Includes parts, labour and VAT)**

Clarborough Hill, Clarborough, Retford, DN22 9EA  
Tel: 01777 704823 [www.rbmagricultural.co.uk](http://www.rbmagricultural.co.uk)

## Annual Sitting of UK Youth Parliament

Simran Uppal, Member of the Youth Parliament for Bassetlaw, attended the Youth Parliament in November 2018.



On Friday 9<sup>th</sup> November, Members of the Youth Parliament debated topics as diverse as knife crime, votes at 16, and homelessness, as part of their annual session in the House of Commons Chamber. Over 250 Members of Youth Parliament from across the UK participated in the Commons debate. Simran Uppal, Member of the Youth Parliament for Bassetlaw from Ranskill and Chair of Bassetlaw Youth Council was amongst those who attended.

The sitting was the tenth session of the UK Youth Parliament in the Commons Chamber and the topics for debate were selected through the annual *Make Your Mark* campaign. This was the UK's largest ever ballot of young people, with over 1.1 million young people aged 11-18 voting. The campaign was coordinated by the British Youth Council with the support of local authorities, the UK Parliament, and the Department for Digital, Culture, Media and Sport.

UK Youth Parliament has chosen to focus on lowering the voting age to 16 and knife crime in 2019. The decision came following the UK Youth Parliament's tenth House of Commons debate which was chaired by the Speaker, Rt Hon John Bercow MP. Knife crime was declared a top concern in the UK Youth Parliament's Make Your Mark ballot of over 1.1 million young people.

Votes at 16 continues to be an important issue for young people and has been voted as a campaign priority for the third year in a row.

## Visiting Parliament

On Monday 10<sup>th</sup> December your Editor and wife Chris took part in one of John Mann MP's regular Parliament visits. Although a long day, this was an exceptionally interesting and even entertaining event since it happened to come on the same day that our Prime Minister made her historic postponement of the Brexit debate! We couldn't actually witness that from the Public Gallery which we had occupied for around 30 minutes because we had our return coach to catch and had to leave 5 minutes before Mrs May appeared!

However, winding back – we had a very informative guided

tour of Parliament on that hectic day with a brief look into the House of Lords before entering the House of Commons. Having been welcomed on arrival by John Mann, our own Member of Parliament, John 'dropped in' on our tour on a number of occasions to add his own perspective on Commons' protocols, procedures and current issues – Brexit, of course, being top of the agenda. We would strongly recommend readers to take up the opportunity for such a visit – watch this space for future dates and booking procedures.

## Make the world better with chocolate!

New year resolutions to give up chocolate have probably been abandoned by now - good thing too! Fairtrade Fortnight (25<sup>th</sup> February to 10<sup>th</sup> March) is focusing on cocoa producers and needs your support. *Fairtrade for Bassetlaw* activists are currently planning locally and hoping that the district will embrace the message with enthusiasm. Most cocoa farmers are in West Africa, and the shocking fact is that 60% of them live below the poverty line. By buying chocolate with the Fairtrade Mark you are standing up for producers, ensuring that they receive not only a guaranteed minimum price but also a premium which helps them to invest in business and the local community.

The Fairtrade Mark is widely recognised in the UK, which celebrates 25 years of Fairtrade this year.

Fairtrade Fortnight will see the launch of a three year campaign by the Fairtrade Foundation *She deserves a living income*, highlighting the fact that farmers across the world, many of them women, are underpaid and exploited, unable to afford the basics most of us take for granted, including food, housing and education.



The average living income for a cocoa farmer is £1.90 a day – about what you'd pay for a 100g bar of good quality chocolate. But most of them earn far less than that. If you look out for the Fairtrade Mark next time you buy your chocolate fix, you'll be helping to make their lives better.

*Fairtrade for Bassetlaw* will be talking to local shops and cafes and hopes that there will be some special events and promotions during Fairtrade Fortnight. If you'd like to get more involved, contact Kathy Cowbrough, *Chair of Fairtrade for Bassetlaw* on (01777) 706 880 or [chair@Fairtrade4bassetlaw.org.uk](mailto:chair@Fairtrade4bassetlaw.org.uk)

...but just eating Fairtrade chocolate is a good start!

**Editor:** For more, see your community website's **Local Business** ► **Fairtrade** page.

### ReNew

## Carpet & Upholstery Cleaning

- High Powered Portable Equipment
- Commercial & Domestic Services
- Stain Removal / Reduction
- Satisfaction Guaranteed
- Dry in Hours NOT Days
- 'One Off' or Regular Cleans
- Fully Insured & Experienced
- CRB Checked Operators

Please Call Mob: 0755 000 2242  
Tel: 0177 770 2779

*"The bitterness of poor quality service lingers long after the sweetness of price is forgotten"*



## Clarborough & Welham IT Group continues to make donations

At Retford Business Forum's November meeting discussions included choice of venue for meetings into 2019. The Forum had been meeting in Retford Town Hall but increasing costs of hire, driven by pressures on local authority budgets, were beginning to tell. The Forum remains keen to continue to meet in Retford Town Hall for a number of reasons largely revolving around its central position and town identity. It was within this scenario that your Editor offered a donation to Retford Business Forum of £100 on behalf of Clarborough & Welham IT Group to help maintain the Forum's identity with Retford Town Hall. Your Editor presented the cheque at the 3<sup>rd</sup> December Meeting of Retford Business Forum.



[Above] Greg Herdman presents Clarborough & Welham IT Group's cheque to Rick Brand, Chairman of Retford Business Forum.

## Retford Business Forum (RBF)

RBF meets at 17:30 for 18:00 on the first Monday of every month (except bank holidays, when it is the following Monday) in the Council Chamber at Retford Town Hall. We are made up of organisations and individuals who care about the success and wellbeing of Retford and the villages around it. You do not need to run a business to join.

Attending meetings is free - there is a voluntary membership subscription of £24 to help towards costs. Anyone who shares our objectives and principles is very welcome. Why not come along and join in?

RBF has successfully delivered the Retford Christmas Market and Lights Switch-on for the last three years and this event goes from strength to strength.

If you would like to get involved and help us to make this happen, there will be an open invitation meeting at Spencer's on the Square in Retford at 19:00 on 13<sup>th</sup> February 2019 - why not put it in your diary now?

You would be very welcome.

See you there!

**Rick Brand**  
Chair, Retford Business Forum

## Letters to the Editor

One dark November afternoon I was driving home and as I approached I had to slow down for a chicane-type sequence because of vehicles parked on opposite sides of the road.

As I turned the corner I suddenly came across a young man (12-13 years old I'd guess) walking down the middle of the road with his back to me. He was wearing headphones and clearly had no idea that I was there until he suddenly jumped as I flashed my headlights. At that he scrambled between two parked cars and onto the footpath. I have observed this particular corner from the roadside on many occasions and have felt uneasy about the speed with which some people drive – clearly keen to get home at the end of a trying day. If one of those had come across this young man neither party would have had a chance; I shudder to think of the consequences.

**A concerned Clarborough Resident**

Since the poppies on lamp-posts and the silhouetted soldier seem to be only here in the village, I assume that the idea is a local one? May I ask you therefore to thank the person or organisation concerned for such an original idea. Very moving and very appropriate.

**Linda Davies**

## Retford Library's Family & Local History Group

On the second and fourth Monday of each month (except August and Bank Holidays) from 17:00 to 19:00. Just drop in, there is no charge and the group has free online access to Ancestry.com as well as other online and hard-copy resources.

## Goacher's Farm Shop

Wood Lane, North Wheatley



The only traditionally grown Wheatley fruit.

Picked and PYO  
**Strawberries, Raspberries, Cherries,  
Plums, Apples, Pears etc**  
Taste the difference!  
Fresh and frozen

Also available;  
**Asparagus, Turkeys, Honey, Jams,  
Chutneys, Potatoes, Vegetables, Eggs,  
Juices and Home baking**

**Now serving hot drinks**

For opening times please  
Phone; **01427 880 341**  
or **www.goforgoachers.co.uk**

## Better Broadband For Nottinghamshire



### Fibre Broadband for Clarborough

Over the past 5 years, Nottinghamshire County Council has been leading a programme to deliver fibre broadband across Nottinghamshire. Better Broadband for Nottinghamshire is a £31m partnership between the County Council and a range of funding partners including Central Government, Openreach and the area's District, Borough and City councils. The programme builds on the commercial roll-out of fibre based broadband which alone has provided superfast access to 86% of properties in Nottinghamshire. As a result of the Better Broadband for Nottinghamshire programme, 98% of Nottinghamshire premises will be able to access a network, capable of delivering superfast broadband by March 2019 and we continue to move towards 100% coverage. Thanks to our programme, superfast broadband coverage in Nottinghamshire is amongst the best in the country, ahead of both the UK (95.5%) and East Midlands (97.4%) averages.

Broadband is a connection to the internet that is always on. The better the quality of broadband the better the internet experience is. Fibre based broadband is the new generation of broadband – much faster, more reliable and utilises a different technology. Whilst traditional broadband is delivered entirely via copper telephone lines, fibre based broadband incorporates fibre optic cable in order to provide

the service. Fibre optic cable has less interference, keeps the signal strength over much greater distances and operates at a higher frequency. This higher frequency means greater bandwidth and greater bandwidth equals faster connection speeds.

Thanks to the programme many residents of Clarborough now have access to superfast broadband, however, it is important to note that these upgrades do not happen automatically and in order to benefit, residents must take action before they could see an improvement. Most internet service providers will be able to provide a fibre service or upgrade you from your current deal and in many cases a fibre broadband package will not cost any more than non-fibre options. When looking for the best deal we recommend you take some time to explore your options and choose the right deal for you. Utilise a comparison website and look out for things like: speed, usage, contract, calls and offers.

To see what fibre broadband services are available to you please visit:

<https://www.homeandbusiness.openreach.co.uk/fibre-broadband/when-can-i-get-fibre>

If you have any questions regarding fibre broadband in your area please contact us via emailing:

[enquiries.broadband@nottsccl.gov.uk](mailto:enquiries.broadband@nottsccl.gov.uk)

**Better Broadband for Nottinghamshire**

*"Too many of us are not living our dreams because we are living our fears."*

**Les Brown (Born 17<sup>th</sup> February, 1945)**

Established  
1991

# everest

## Tandoori & Balti Restaurant

### 27 years of memorable dining experience

22 Grove Street, Retford DN22 6JR  
Telephone 01777 704 000



# K9 Cuts Dog Grooming

*66 Broad Gores, Clarborough DN22 9JX*

**Full Grooms**  
**Bath and Blow Dry**  
**Puppy Introductions**  
**Nail Clipping** (including small mammals)  
**Discounts for Assistance Dogs**



## **Emmi-Pet Teeth Cleaning**

Vibration free without  
brushing. Contact us for  
further information



*Recommend a friend - £5 off a full groom for you and a friend when  
registering as a new customer*

# **Tel: 07795 116731**

Find us on Facebook and Instagram



@K9CutsDogGroom



@K9CutsDog





## The Parish Pasture

### Tree Planting

The most obvious change in the appearance of the Pasture is in the number of new trees. Apart from the 5 Oak Trees planted as part of the Remembrance Weekend (see page 13) another 12 trees have been planted. 10 of these have been funded by grants from both Retford Lions Club and Retford Rotary Club. Others have been donated by the National Trust at Clumber Park, Sherwood Forest National Nature Reserve at Edwinstowe and the National Memorial Arboretum in Staffordshire. One has been donated by a gentleman living in Welham. Species include Beech, Chestnut, Rowan, Hazel and Hornbeam. There are still more to be put in during the winter months.

The FoPP group are very grateful to the Village Ventures for their extremely generous donation for the full cost of the metal tree guards now installed around each of the 5 Memorial Copse trees.

### Hedging

The Muddy Fork group, based at the Idle Valley Centre in Retford, have again been generous with their time in order to plant replacement hedging 'whips' for those which died as a result of the hot and dry summer.

### Footpath

From the end of May to the beginning of November the wood chipping footpath provided a good clean surface for the new footpath. Unfortunately, the repeated rainfall in November has caused it to become less good, although still better than the old footpath. The FoPP group is seeking funding for a more permanent all-weather surface.

### Dogs!!!

Whilst dog owners are most welcome to exercise their pets on the land we still have a number of irresponsible owners who are being antisocial and not 'picking up' after their pets. A recent quick look around showed at least 8 piles of 'poo' with one having been stepped in by another visitor!!! It is your legal responsibility to pick up any mess – **Please - pick it up!!**

### Housing

The Parish Council has been informed that the developers

are progressing with designing the 38 new houses. We have been promised that this will be brought to the Parish Council before submission for Planning Consent.

**Paul Willcock**  
Parish Councillor



The term started well at and the children have settled well. We have a busy term ahead and are looking forward to lots of exciting things.

Year 3 & 4 are taking part in a *Bikeability* session, Year 6 begin their *DARE* course and we have lots of sporting fixtures to take part in. The children enjoyed our first film night of the year during the first week of term; they had a choice of 2 films and enjoyed popcorn and a drink. On Thursday 14<sup>th</sup> February we will be holding our first *Valentines Disco* in the school hall and we have a Swimming Gala on Friday 15<sup>th</sup> February. Parents recently attended a series of maths workshops at school in order to gain more of an insight in to how the children learn maths in school and to show them how they can help and support their children at home. The school received positive feedback from this.

On Monday 14<sup>th</sup> January, 48 children from Key Stage 2 attended the *Young Voices* concert at Fly DSA Sheffield Arena. This event was with a number of other schools and there were over 5,500 children taking part. The concert was fantastic with such a wonderful atmosphere. All of the children and parents thoroughly enjoyed it and although it was a very late night everyone behaved impeccably.

**Don't worry if plan A fails, there are 25 more letters in the alphabet.**

**Anonymous**

## Is your family growing up so that you are thinking of getting back into full-time employment?

If so, have you considered taking part in a local group that can provide you with a bunch of employment-related skills but also opportunities to enhance your own inter-personal and communication skills?

**The opportunity is right on your doorstep in Clarborough Village Hall.**

**Clarborough & Welham IT Group** provides all of the above together with tutor experience in careers guidance and even higher education application. We can work with you to improve your CV and even provide references where necessary.

We have classes on either Tuesday afternoons (13:30-15:00) or Wednesday mornings (10:00-11:30) at just £20 for a 5-week programme. **Our next block of classes starts w/c 4<sup>th</sup> March.**

Bring your own laptop or borrow one of our Windows 10 machines for classes.

**If this sounds interesting, or you'd just like to find out more, contact Greg on: (01777) 700 918 or clarboroughwelham@gmail.com**



## Do you require any land-based training?

Health & Safety, Pesticides, Chainsaws, Fork Lift, First Aid, Abrasive Wheels, Management, COSHH, Employment Law, Vermin control, Livestock courses

## North Notts Training Group



"Cost effective professional training for a safe & efficient tomorrow"



**Contact: Vicki Wilson**

**Mobile: 07855 751 689 Fax: 01427 884 294**

**vkwilson1@yahoo.co.uk**

**www.nntg.co.uk**



Lantra Awards and City & Guilds

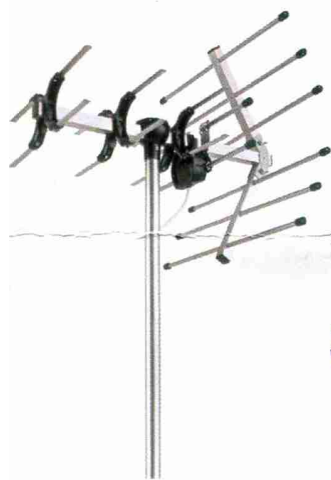
# SIGNAL ELECTRONIC SERVICES



sky+ skyHD

Make sure you're ready for 2011

All Sky Services Supplied and Installed



Satellite and Aerial Installations  
Digital Switchover services -  
Free Quotes for all Aerial Upgrades

*Closed Circuit TV  
Installed and Serviced*

Full Plasma Installations -  
Sets mounted on walls/brackets etc.

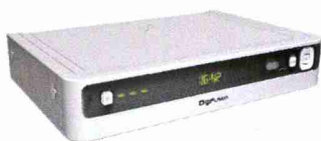
*Cameras and Lighting*

Telephone Points and Extensions

*Specialist in Multi-point Systems*

All Work Guaranteed 1 Year

*Domestic, Commercial, Contract & Insurance Work*



Free Site Survey, Free Digital Meter Test, Free Call Out, Free Advice  
If you would be happy with this level of service *Reward Us With The Job!*

**Contact Philip Stringer (Proprietor) at the Signal Office on:  
(01777) 870 665 or 07889 833 410**

*Over 25 Years Experience in the Electronics & TV Industry*



## Dear Soldier...

The following was forwarded to your Editor from the Pollington (near Snaith) Memorial Gardens which we visit at least twice each year to remember a relative, Frank Moynihan, who lost his life flying Halifax bombers with 51 Squadron RAF in November, 1943.

Each Remembrance event involves local school pupils laying poppies on the memorial on the site of the former airfield. The following was sent by a young boy from Snaith Primary School who had put poppies on the memorial on Remembrance Sunday. This was his homework:

*Dear Soldier,*

*I am writing to tell you that you haven't been forgotten.*

*Today, Remembrance Sunday, I visited the memorial garden at RAF Snaith in Pollington by the side of the old runway. The service started when RAF pilots marched in wearing their shiny medals with pride as the lone bugler played the Last Post and the flags were lowered to half mast. We stood in silence.*

*I thought about what I had seen on TV, of the black and white images of planes dropping bombs and planes falling from the skies. I thought how brave you all were. Were you ever scared? Did you ever think of yourself when you gave your life for me?*

*Then it was my turn. Stepping forward, gently carrying the posy of scarlet poppies I bent down and placed the poppies on the stone. Taking a step back, I bowed my head while quietly saying, "Thank you"*

*Your bravery will always be special to me.*

*Yours faithfully,  
Thomas Calpin*

As a school Governor myself, I can vouch for the fact that this young man's response to such a moving event is so typical of our young people – and quite contrary to the oft-repeated view based on media reports of the one-in-a-million 'bad apples' that give the rest such a bad name in some people's minds.

This leads rather neatly into family history research. The following montage of Frank Moynihan's final-mission was compiled from surviving records by Peter Gulliver who researches for 51 Squadron RAF. It shows Halifax B.II (LW286) with Frank Moynihan and some of his fellow crew members.



What a great time we had at the Parish Christmas Party in December. Over 90 senior residents from our Parish and Hayton joined us for a seasonal meal and great entertainment. We would like to say a

big 'Thank you' to everyone who helped either financially or in any other way. Without your support the party could not go ahead.

We also had fun at the Tree lighting festival with our 'Guess the number of currants in the cake' competition. The actual number given by the bakers was 4,368 and the



winning guess was 4227 submitted by Phil Gibson. Congratulations to the winner and we hope that you enjoyed the cake!

Our regular meetings continued through the autumn and winter. In November we had a demonstration which provided advice on how to choose our outfits to suit our colouring, and in January the Rev Cannon Haydock entertained us with stories from his life of a country vicar. Meetings are always held on the second Monday of the month at 19:30 in the village Hall. The next meeting in February will feature a talk about life as an International Judge of curling competitions. Visitors are always welcome, the small fee of £4 includes light refreshments.

To find out more about any of our activities call 01777 949 847, email [clarbdiswi@hotmail.com](mailto:clarbdiswi@hotmail.com) or visit our facebook page.

*"China is a sleeping giant. Let her sleep, for when she wakes she will move the world." Napoleon Bonaparte*

## 2 MEN WITH A VAN FOR HIRE

Single items to Full Houses

**All jobs considered**

**LOW PRICES**

**Mob: 0755 000 2242  
or Tel: 01777 702779**

South Street Storage... Secure, Affordable Solutions



# 1914 – 1918

## Clarborough & Welham Parish Remembered

**An idea which just grew!** Representatives of the Parish Council, the WI and the Church Events Committee met to organise the events to be included.

**Lamp Post Poppies** In early October 40 lamp post poppies, funded by the Parish Council, were put up from the bottom of Clarborough Hill to Welham Corner. The Retford Branch of the Royal British Legion had many comments from members of the public passing through the Parish about this display.



**Our 'Tommy' Silent Silhouette** Mid-October saw the arrival of our "Silent Tommy", installed near the boundary between Welham and Clarborough villages. It represented the soldiers of "The Great War" in full fighting kit as they would have been when moving up to the Front-Line trenches.

It is thought to have been the only one for many miles, the next nearest being sighted in Farndon south of Newark!

**Why "Tommy"?** "Tommy" was the general name used to include all soldiers in The Great War and poems were written to "Tommy Atkins". The most popular explanation of the name is that in 1797 the Duke of Wellington saw a

dying soldier from a battle in Flanders whom he comforted. The name of that soldier was Tommy Atkins. Many years later the army was designing an enlistment form for soldiers, including examples of how to fill it in. The Duke was asked what name should be put in as an example and he suggested the name "Tommy Atkins" to remember the young soldier from 1797!

**Flower Festival** The Events Group at St John the Baptist Church organised the Flower Festival which was held over the weekend of 10<sup>th</sup> & 11<sup>th</sup> November. Their theme was the life of "Tommy Atkins" after joining up in 1914.

From the drill room to the trenches, through the nursing many needed, all were represented in selected flower arrangements and artifacts, from period nurse uniforms to a bugle and original flags. The church was decorated throughout.



The largest display was the window created with knitted poppies by the ladies with for WI. The 100+ visitors across the Saturday and Sunday opening were served drinks and light refreshments.

**Remembrance Day Service** With a congregation of 102 (a record) for the traditional Remembrance Service on 11<sup>th</sup> November, the Church was packed. The service was conducted by Rev Mark Cantrill.

*European nations began World War I with a glamorous vision of war, only to be psychologically shattered by the realities of the trenches. The experience changed the way people referred to the glamour of battle; they treated it no longer as a positive quality but as a dangerous illusion.*

**Virginia Postrel** American Writer born 14 Jan 1960





**Memorial Copse** The afternoon of Remembrance Sunday, saw a Memorial Copse of 5 Oak Trees planted on the Parish Pasture in memory of the 28 men of the, then, Clarborough Parish who died in or as the result of wounds received in The Great War. Trees, donated by Sherwood Forest National Nature Reserve, the National Trust at Clumber Park and the National Memorial Arboretum, were planted by residents of the Parish.

The Oak of Sherwood Forest was chosen for the Memorial Copse as half of the men of Clarborough who died had joined up to the Sherwood Foresters Regiment whose crest bears an Oak Tree.

The 70 people attending heard the dedication of the trees by Rev. Mark Cantrill after which District Councillor Kath Sutton read the very moving poem "In Flanders Fields". Following the reading of the names of the men who died, a Trench Whistle was blown to symbolise the men going 'over the top' before the Last Post was sounded and a 2 minute silence held.

**The Great War or World War 1?** Soon after the 1914-1918 war started it became known as "The Great War" as it drew in troops from around the world and it became longer and longer. The name 'First War' or 'World War 1' only came into use after the 1939-1945 World War.

**Display and free refreshment** Clarborough Village Hall held a display dedicated to the 28 men of the Parish who died and featuring Great War information, including a number of photographs of Clarborough of the era.

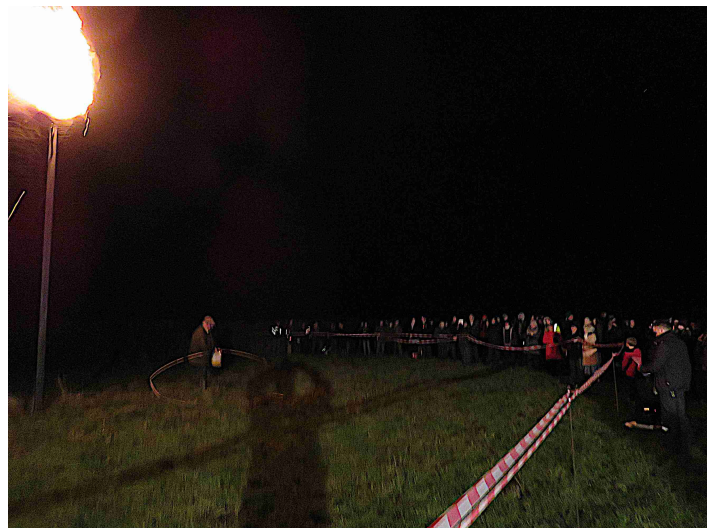
Over 100 people attended through the afternoon to see the static display and a projector display which showed life in the trenches, whilst listening to war-time songs. As well as

the displays, they were treated to free homemade food courtesy of the Clarborough & Welham Women's Institute which made it, served it and funded it. The displays in the Church and the Village Hall complimented each other by offering different approaches to representing the war.



**The Beacon Lighting "Light after the Darkness"** The lighting of the Beacon was designed to symbolise the lightening of the spirit of the people at the ending of The Great War.

Some 1,200 Beacons were lit nationwide, some of which could be seen from the Clarborough Beacon. Over 130 people attended the lighting which was preceded by the poem "The Soldier" read by Parish Councillor Steve Bowler who also read the "Exhortation", which ends with the familiar words "We shall remember them". There were visitors to the Parish from both Retford and Worksop.



**The Church Bells** Five minutes after the Beacon Lighting the Church Bells started their peal along with the bells of thousands of other churches across the country. This replicated the reaction to the Armistice on 11<sup>th</sup> November 1918 when many, many churches across the country, including Clarborough, rang their bells almost as soon as they heard the news that the fighting had ended at 11am.

**The War To End All Wars** is most famously linked to US President Woodrow Wilson in 1917 but was actually coined by British writer H.G.Wells as title of his article in *The Daily News* of 14<sup>th</sup> August, 1914.





## Volunteers keep the canal ship shape

The Chesterfield Canal looked very tidy this autumn thanks to dozens of volunteers helping to cut back overgrown vegetation. The

programme is being organised by the

Chesterfield Canal Trust (CCT) working in partnership with the Canal & River Trust (C&RT).

By the end of the programme, the whole of the eastern end of the canal will have been covered – a total of 31 miles, which is owned by C&RT.

The volunteers have used the Chesterfield Canal Trust's 89 year old workboat, *Python*, to reach overhanging branches on the off bank.

The first sessions took place in September and they will run until early December.

Last year, the two Trusts combined for a similar programme, which ran on 17 days. This year, *Python* will be out for 31 days.

Most of the volunteers are members of one of the two Trusts, but a few are members of neither but want to do their bit for a canal that they love. *Python* is always skippered by an experienced crew of CCT members.



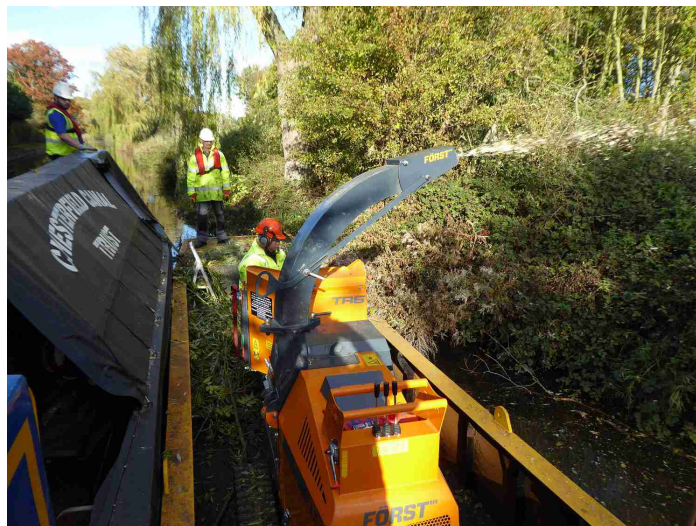
All the required kit, including personal protection equipment, has been provided by C&RT.

Last year, all the vegetation was cut up and put into huge builders' bags, unloaded at an agreed site and then collected and disposed of by C&RT. This year, C&RT provided a hopper for *Python* to tow with a wood chipper stowed in its hold. They also provided chipper training for key team members, so that everything could be disposed of much more easily in an environmentally sound manner on site.

Interestingly, some volunteers have come from local businesses which see this work as part of their Corporate Social Responsibility. This is an area of volunteering that the Chesterfield Canal Trust will be developing in the coming months across several of its activities.

Jan Warsop, who looks after *Python* for CCT and has coordinated the programme, said: "The arrangement we have with the hopper and chipper is making the vegetation cutting process much more efficient; volunteers are clearing far more than was managed last year. The team is

amazing and I have had full confidence in their ability to get the job done in a safe and efficient manner. The volunteer numbers are incredible. The communities along the eastern section of the canal are clearly responding well to seeing some positive CCT activity on their canal."



Martin Carney, C&RT Site Supervisor (Volunteering), said: "The response from volunteers has been fantastic, everyone has enjoyed the experience and feels their contribution is valued. I cannot thank your teams enough for having faith in what we wanted to achieve, and it couldn't have happened without the volunteers. Please pass on my thanks to everyone that has been involved. Hopefully the success of this programme will encourage many to volunteer in the future."

# USED:

**Furniture  
White Goods  
Nik-Naks  
Bits & Bobs**

**Now incorporating  
WeLoveltShop, home of  
Shabby Chic & Upcycling**

**FULL & PART**

**HOUSE CLEARANCES**

**TEL 01777 702779**

**OR TXT: 0755 000 2242**

**South Street Business Centre, Beehive Street  
Retford, DN22 6JE**





## Bassetlaw District Councillor Kath Sutton



I think Clarborough and Welham have enjoyed a wonderful few months of social activity with all the efforts that went into the Commemoration of the Centenary of the end of World War 1 and our Christmas celebrations. The Church was decorated so beautifully for the commemoration and the service held there was really moving. The tree planting ceremony was poignant and the following display in the village hall was fascinating with its wealth of detail, and many lingered to enjoy the refreshments put on by the WI. The lighting of the beacon was a fitting climax and illustrated the amazing team work organised by the Clarborough and Welham Parish Council which made all of these activities possible.

Then, hard on its heels, came our Christmas festivities with the Victorian market, Church concert and the Parish Council senior citizens party organised by the WI. All in all it's been such a sociable, warm and welcoming time, and a few friends of mine have expressed their envy at my good fortune in living in such a busy and active village where you can become so involved. Thank you so much to all those people who were responsible.

One of the last meetings of BDC before Christmas outlined the district wide consultation period starting on 14 January 2019 which invites residents to comment on the Draft Local Plan. This Draft Bassetlaw Plan sets out the Council's priorities when it comes to housing, regeneration and other developments in the district that will take place up to the year 2035. It looks at how the Council can shape the delivery of new housing, as well as ensuring that development is of the right type and character and in the right location to meet the needs of future generations. The plan also focuses on delivering employment land across Bassetlaw to provide future jobs and opportunities that will attract investment into the district. Planning officers will visit 18 villages in addition to Worksop, Retford, Harworth and Bircotes, as part of the eight week consultation period that will include a total of 22 events. Dates and venues will be available in the New Year, but residents and interested parties will also be able to view and comment on the Draft Bassetlaw Plan via the Council's website.

It was pleasing to note that the County Council has postponed further discussion on the unitary proposal, realising that more consultation with interested parties was needed to make people feel more aware and involved in the process. This is not to say that a change in the way local government is run will not happen. Financial pressures means that some changes will have to be made in the future, but only when all options have been considered and everyone has had a chance to participate. In conclusion – Can You Help?

The Rev Mark Cantrill wishes to have the enclosed tomb at the top of the path leading to the Church, restored to its former glory. To accomplish this he needs to have some knowledge of the two families entombed and we are conducting much research. The tomb nearest the path belongs to the Chappell family and thanks to Charles Cave we know that the now illegible inscription on the other tomb belongs to the Wheelwright family.

### Question one

Have you any knowledge of any descendants of either family?

### Question two

We know from references that William Chappell lived in Welham House for a number of years. After much enquiry no one seems to have any knowledge of such a house, so one theory is that a house of some substance in Welham has perhaps been renamed. Have you any knowledge of this? Certainly we have reference to a Welham House being sold in 1946.

Already, with much help, we have uncovered some fascinating local history. If you can help please contact me. Telephone (01777) 709 034

Here's hoping!

Kath

## Dates to remember

**28<sup>th</sup> June. 100 years ago this year:** Although the Armistice of 11<sup>th</sup> November, 1918 ended the major fighting of World War One, the formal Treaty drawing the conflict with Germany to a close was signed in the Palace of Versailles, Paris, on Saturday 28<sup>th</sup> June, 1919.

**On July 21<sup>st</sup> 1969 (50 years ago),** Neil Armstrong took the first human steps on the moon. As he put his left foot down first Armstrong declared: *"That's one small step for man, one giant leap for mankind."*

**3<sup>rd</sup> September: 80 years ago,** 3<sup>rd</sup> September, 1939. At 11:15 a.m. Mr. Chamberlain broadcast to the nation the following statement announcing that a state of war existed between Britain and Germany:

*"This morning the British Ambassador in Berlin handed the German Government a final Note stating that, unless we heard from them by 11 o'clock that they were prepared at once to withdraw their troops from Poland, a state of war would exist between us."*

*I have to tell you now that no such undertaking has been received, and that consequently this country is at war with Germany."* **World War Two had begun.**

**October 1<sup>st</sup> 1949 (70 years ago)** China was proclaimed a Communist state. Communist Party Chairman Mao Zedong took over the reign of Government and proclaimed the establishment of the People's Republic of China.

**November 9<sup>th</sup> 1989 (30 years ago),** The Berlin Wall was breached after nearly three decades of keeping East and West Berliners apart.



## Lawns Cut

### Lawn Cutting & Gardening Service

- Lawns cut every 7-14 days
- Cuttings bagged for your disposal
- Hedges
- Pruning
- Taming work also undertaken

For free no obligation quote, please call:  
0755 000 2242 or 01777 702 779

"You'll be amazed at our low prices!"

## Got your calendar?

Have you ever wondered where our calendar came from? Even the names of months hint at a convoluted past – many readers will recognise prefix *dec* as standing for ten – hence decades, decimal, decibel. If that's the case, why is December the *twelfth* month?

You may also have wondered why we need the concept of a *leap year* – where does the one-in-four come from? Also, why do some dates show BC and AD but no zero value?

All of these aspects are interlinked but we only have space here to explore a few of these questions. To delve more deeply into this fascinating topic go to Google. Enter some of the key terms that appear in the following short article and prepare to explore much of the history of the past 3000-4000 years – you have been warned!

Let's start with the origins of calendars as a concept. The earliest methods of timekeeping exploited by prehistoric societies were almost certainly based on the day, solar year and lunation – the time between new moons. Archaeological evidence points to the Ancient Near East; the first written calendar in Sumer was based on an earlier Third Dynasty of Ur version from the 21<sup>st</sup> century BC. This already had 12 months and was based on a lunar cycle each beginning when a new crescent moon was first sighted low on the western horizon at sunset, plus an extra (intercalary) month inserted as needed by decree to maintain the visual cycles. The base of 12 is a mystery.

These Persian and Babylonian calendars were constantly tweaked to maintain links with visual cycles but by the time of Roman domination, things had got rather out of step – in the latter phase due to warfare and dynastic upheavals within the Roman powers themselves. Enter Julius Caesar!



If we step back a while, the earlier Roman calendar had just 10 months with latter names many school pupils will recognise as indicating their position in the year: Martius, Aprilis, Maius, Junius, Quintilis, Sextilis, September, October, November, and December.

Having won his Civil War against Pompey (49-45 BC) Caesar found it necessary to reform the calendar. The pre-Julian year had 355 days with various *intercalary* days or even months added to realign calendar and solar cycles. Caesar add a 67 intercalary days to the calendar of 46 BC so that 45 BC could start on 1<sup>st</sup> January. Pre-Julian months had lengths of:

29, 28, 31, 29, 31, 29, 31, 29, 29, 31, 29, 29  
giving the total of 355 days.

*Julian calendar* added ten days to a regular pre-Julian Roman year of 355 days, creating a regular Julian year of

365 days. Two extra days were added to January, Sextilis (August) and December, and one extra day was added to April, June, September and November giving:

31, 28, 31, 30, 31, 30, 31, 31, 30, 31, 30, 31

The eighth month, known as *Sextilis* in Caesar's time was renamed *August* in honour of his immediate successor, and first emperor, Augustus Caesar, in 8 BC.

The 'reach' of Roman influence for the next five centuries – and double that at least as far as the Roman Catholic church was concerned, meant that the Julian calendar became the basis of most of European and Middle Eastern calendars. However, the slight discrepancy in the length of the year (some 648 seconds too long) had led, by the mid-16<sup>th</sup> century, to the calendar and equinoxes becoming seriously out-of-step which troubled the Church in particular. For this reason, Pope Gregory XIII in 1582 introduced the revised calendar that now goes by his name, the *Gregorian Calendar*, on 24<sup>th</sup> February 1582.

Two key requirements of the reforms were a) to bring the date for Easter back to that recognised by the early Church, and b) avoid future needs for reforms. To deal with the 10 days difference (between calendar and reality) that this drift had already caused, the date was advanced so that 4<sup>th</sup> October 1582 was immediately followed by 15<sup>th</sup> October 1582 leading to some complaining that they had had their lives shortened!

The major reform to address the 648 seconds issue mentioned above was to change the leap-year rules. Whereas the Julian Calendar had a leap year every fourth one, the Gregorian system dropped leap years in centuries that were not divisible by 400 – hence 1900 wasn't a leap year but 2000 was. The upshot of these variations now gives us calendar years that are 365.2425 days long which compares with the measured time for the Earth to orbit the sun of 365.2422 days. The tiny difference is already 'in-the-system' with a *leap second* added to official clocks; 27 such additions have already been made since January 1972 with the most recent on December 31<sup>st</sup>, 2016.

However, we jump ahead; the Gregorian calendar was adopted throughout the Roman Catholic world, at least initially for ecclesiastical purposes, but with the Reformation in full swing, much of northern Europe remained with the Julian calendar. Great Britain only adopted the Gregorian Calendar in 1752 with the 'ten lost days' etc mentioned above.

Why do financial years (at least in the UK) start in April? This would take quite a bit of study to explain – so we will leave this for a future issue of this Newsletter.

Editor



## J & J Electrical



**For all your Electrical needs**

Repairs - Alterations - Additions - Installations  
Inspection and Testing  
Domestic and Commercial  
Anti-condensation systems

No job too small  
Email: [ij.james558@hotmail.com](mailto:ij.james558@hotmail.com)  
Telephone : 07771 163778



## Must read!

With so much confusion over Brexit it is all too easy to remain immersed in our own little world while 'out there' massive changes are afoot. The 1.5°C climate change challenge (to put it mildly!) is well reported but what about the massive changes that have been taking place on the international economic front?

Peter Frankopan's recently published ***The New Silk Roads : The Present and Future of the World*** (Bloomsbury Publishing ISBN-13 978-1526607423) points to radical changes in how the world's economies will look by the time today's Primary School pupils are into their careers. These put Brexit into a new perspective.

Let's start with generally agreed current statistics for the world's top economies (figures in \$US; trillion = million millions or 10<sup>12</sup>):

USA	18 trillion
EU*	18 trillion
China	11 trillion
Japan	5 trillion
India	2.25 trillion
Brazil	1.8 trillion

\*This rating is often ignored in Brexit debates; currently Germany leads (3.7 trillion) the EU list with UK and France some distance behind (2.6 trillion each) followed by Italy and then the rest of the EU further back still; but the above puts the whole EU in perspective.

Winding forward to 2030 to see what Primary pupils' world would look like, predictions look something like this:

China	38 trillion
USA	23.5 trillion
India	19.5 trillion

Japan	5.6 trillion
Indonesia	5.4 trillion
Brazil	4.4 trillion
Russia	4.7 trillion
Germany	4.7 trillion
Mexico	3.7 trillion

If the EU were to remain as currently composed with UK included, these predictions put the EU roughly level with India in 2030.

So, how are are leaders managing the huge changes that these figures imply? Peter Frankopan contrasts the Chinese approach that seeks to improve ties, work together with similar strategies while many western economies have tended to isolationism (Trump's 'America First' or Britain's Brexit). The Chinese approach is already apparent in its influences, for instance, in Africa. History also tends to show that economic 'clout' is mirrored by military 'might'!

[Note: Peter Frankopan is Professor of Global History at Oxford University.]

Editor

## Check your Broadband speeds

A quick, easy and cost-free way to check your download and upload speeds can be achieved by going online to Consumer's Association (Which?) website at:

<https://broadbandtest.which.co.uk/>

Interestingly, your Editor had often wondered why download speeds always seem much faster than upload speeds. It turns out that this is a design feature recognising that the vast majority of online experience is downloading information rather than uploading it. So now you know!

Editor

# The Kings Arms Clarborough

*Bingo every Monday from 19:00*

*Quiz Night every Wednesday from 20:00-22:00*  
with regular Raffle

**Regular special events too – drop-in to find out more!**

*Good food, good drinks and good company*  
*come and find out more!*

**We have ample car parking too!**



The Kings Arms, Main Street, Clarborough, Retford DN22 9LN  
(01777) 708 845 or [mzawarta@hotmail.co.uk](mailto:mzawarta@hotmail.co.uk)



The Kings Arms Clarborough



We are a traditional village pub located on Main Street just a short walk from the Chesterfield Canal with ample parking. We have an open fire, traditional pub games and cask ales (changed regularly) as well as lagers, wines plus hot and cold drinks. Food is served Tuesdays to Saturdays 12:00 - 20:00 plus Sunday lunch 12:00 -16:00



## Nottinghamshire County Councillor Tracey Taylor



A Happy New Year to residents; 2019 promises to be another busy one. The big conversation about Local Government reorganisation for Nottinghamshire continues. Whilst there is still no consensus amongst County, Borough and District Councils on the best future model, it is increasingly

recognised that some change is necessary. Notts County Council commissioned work last year to examine options; you can find "The Outline Case for Change" available online in the NCC Agenda for the Council meeting 13<sup>th</sup> December 2018; or contact me by email for a pdf version. As I write, we don't expect to be involved in this year's European elections on 23<sup>rd</sup> May; but we do have District Council elections on 2<sup>nd</sup> May. Any possible local government reorganisation would be for a future election cycle.

NCC and your Parish Council are working together on flood resilience plans for the village; this comes because Clarbrough is already active in this respect, and will involve the wider community as it progresses.

If you have a query that you would like help with, please don't hesitate to contact me.

Email: [cllr.tracey.taylor@nottsc.gov.uk](mailto:cllr.tracey.taylor@nottsc.gov.uk)  
Tel: 0115 804 3177 Mobile 07770 847086  
Home (01777) 816781

## An interesting bit of Local History

Recent researches in Retford Library's Local Studies collection uncovered the following very interesting data headed **Population of Retford etc. 1793**

	<b>Births 1789-93</b>	<b>Burials</b>	<b>Pop*</b>
<b>Clarbrough &amp; hamlets</b>	<b>208</b>	<b>89</b>	<b>1206</b>
<b>Ordsall</b>	<b>83</b>	<b>71</b>	<b>504</b>
<b>E.Retford</b>	<b>347</b>	<b>248</b>	<b>1910</b>
<b>W.Retford</b>	<b>91</b>	<b>102</b>	<b>524</b>

**Source: R.Lowe: General view of the Agriculture of the County of Nottingham 1798 Append. XII**

\*short-hand for *Population*.

This data shows how relatively important Clarbrough (or Clareborough as it was then) was at the time.

Editor

## Save on childcare fees

90% of parents are missing out on tax-free childcare. If you are eligible for the Government scheme, you can set up an online account which can then be used to pay childcare providers directly.

You can apply at <https://www.gov.uk/tax-free-childcare>

Working parents of 3 and 4 year old's may be entitled to 30 hours funded childcare. Go to the above website to find out more.



Editor

# BOOKWORM

**ORDER NEW BOOKS, OLD BOOKS  
DVDS AND CDS**

Free delivery is made by Angela & Paul Meads who ran Bookworm in Retford for over 25 years

All local villages are included in our personal service from Elkesley to Walkeringham, to Rampton, and everywhere inbetween.

Just phone us on 01777 869 224

**FREE  
HOME  
DELIVERY**

**Angela &  
Paul look  
forward to  
hearing  
from you**

**YOUR LOCAL  
BOOK  
EXPERTS**  
are only a phone  
call away ...

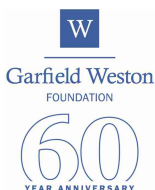






**Bassetlaw Action Centre**, which promotes the independence of older and vulnerable people has been awarded £150,000 from one of the UK's largest charitable funders. The funding will enable the charity to purchase a building. The Garfield Weston Foundation says small community charities are rising to the challenge of facing unprecedented demand for their services by being proactive and innovative.

The Weston Anniversary Fund was launched earlier this year to provide funding to charities to improve their existing facilities or provide new ones as part of the Foundation's 60<sup>th</sup> year. The Trustees took the decision to more than double the fund after receiving over 2,300 applications, with over 60% from charities that have never applied to them before.



**Lynn Tupling, Chief Executive of Bassetlaw Action Centre says:** *We welcome this Garfield Weston funding, as it will enable us to purchase a building to operate our valuable services for many years to come. Grant funding is becoming rare these days and the savings made on our annual rent expenditure can now be used to provide the many charitable services that we offer.*

**Penny B, who is supported by the charity says:** *The volunteers from the Action Centre have been a lifeline to me. I have used the drivers to take me shopping since my husband died and I use their home support service to give me a bit of extra help with things I can no longer do. I think it is marvellous that they have been recognised for all the help they give to all of us.*

**The Garfield Weston Foundation's Director, Philippa Charles, says:** *What really impressed our Trustees is the amount of volunteering and community involvement that's going on across the UK. We heard about so many amazing projects involving local people who are helping their communities thrive - regardless of cuts, Brexit debates and other challenges. The response from charities to this new fund clearly demonstrates the voluntary sector is proactive and energetic; far from the complacency it is sometimes accused of. Yet we can also see the level of need that exists in our local communities and how much the services charities provide are so desperately needed. The impact of these grants will be significant, with benefits for many people lasting years."*

From community centres providing services for isolated older people to organisations tackling youth and gang crime, the funding from the Weston Anniversary Fund helps charities provide more and better services in their communities. A recent survey by the Foundation found that two-thirds (66%) of small charities expect their income to stay the same or decline this year, yet over half (55%) expect to be delivering more services. Getting help with refurbishments or new buildings has been highlighted by charities as vital.

**Editor's note:** For the full report together with appropriate links see your community website's **Voluntary Sector** ► **Bassetlaw Action Centre** page.

## Law and Order

Regular readers will know that our own PCSO Dave Airey's monthly reports are posted in full on our community website (see front page) – but this month, Dave steps aside for Nottinghamshire's Police & Crime Commissioner, Paddy Tipping.



Notts Police and Crime Commissioner Newsletter |



Of course, budget preparations are already well underway for 2019-20 and you will be pleased to know that increasing visibility in our communities remains a top priority. I will of course update you on all our budget plans once the figures are finalised.

## Getting tough on rural crime

Joining forces with crime charity *Crimestoppers*, the National Farmers' Union and local authorities, I've provided £10,000 of funding to proactively address rural crime and ensure our rural communities are aware of how to report crime.

The Crimestoppers-led campaign will run across social media and Mobile GPS Messaging, backed up by traditional marketing, and will promote the charity's reporting line as an alternative for anyone wanting to give information anonymously about rural crime.

I'm also supporting a *Safer Nottinghamshire Board* initiative, also to be delivered by Crimestoppers, focusing on rural crimes such as hare coursing, poaching and off-road vehicle use. Increasing reporting of rural crime will help us to understand the risks in our communities and map our response.

**If you have any information, please contact Crimestoppers on 0800 555 111 or through the non-traceable Anonymous Online Form at [www.crimestoppers-uk.org](http://www.crimestoppers-uk.org)**

**Visit your community website for links to Paddy's regular newsletters.**

## LAWNMOWERS Tony Halford



**Plant & Grass  
Machinery  
Specialist**

36 Albert Road, Retford, Notts. DN22 6JB

**Tel: (01777) 860 704  
Mob: 07976 941 407**

## An Afternoon at Worksof Priory

Spend an afternoon enjoying a **Guided Tour** of the Church, its Gatehouse and the site of the ancient Augustinian Priory.



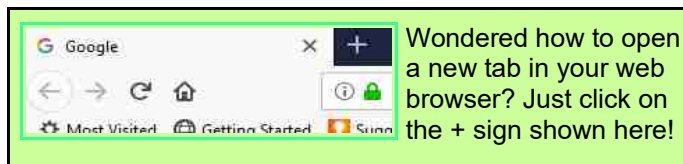
An impressive restoration programme has just ended resulting in a breathtaking transformation of the Worksof's 12<sup>th</sup> century Norman Church.

A thousand year old wall carving...a 17<sup>th</sup> Century Fox's Book of Martyrs hidden within its walls.. and much else to learn about. Find the 14<sup>th</sup> century Crusader Crosses and the 15<sup>th</sup> century skull from the battle of the War of the Roses.. a Gateford girl's part in the execution of Henry VIII's fifth wife Catherine Howard.

No need to book just come along and enjoy an afternoon here at the Priory. We don't charge admission but we will ask for a donation if you have enjoyed your time with us.. otherwise it's free.

Next tours: Wed February 20<sup>th</sup> at 14:00.

Problems? .....Tel. 01909 475 934



## Used laptops for sale

**Acer Aspire E1-572 laptops / Windows 10** recently updated and serviced.

CPU: **1.6GHz Intel Core i5-4200U** (dual-core, 3MB cache, **2.6GHz** with Turbo Boost)

- Graphics: Nvidia GeForce GT 820M (2GB DDR3 memory)
- RAM: 4GB DDR3L SDRAM.
- Screen: 15.5-inch, 1366 x 768
- Storage: 500GB + CD/DVD drive

**Just £200\***

**Interested? Contact Greg on (01777) 700 918**

\*We also have an Asus X501U with similar spec but without CD/DVD at just £150.



**COME FOLLOW THE BAND TO THE GREATEST SHOW ON EARTH!**

Music by CY COLEMAN Lyrics by MICHAEL STEWART Book by MARK BRAMBLE  
Originally produced on the Broadway Stage by Judy Gordon, Cy Coleman, Maurice and Lois F. Rosenfeld in association with Irwin Feld and Kenneth Feld.

Retford Amateur Operatic Society Presents

**BARNUM**  
The Musical

**9th - 11th May 2019**

THE MAJESTIC THEATRE

By arrangement with MusicScope and Stage Musicals Limited of New York

BOX OFFICE: 01777 706886 or [www.majesticretford.com](http://www.majesticretford.com)

"Barnum's the name – P.T. Barnum. I want to tell you that tonight you are going to see – bar none – every sight, wonder and miracle that name stands for!"

Tracing the career of America's greatest showman from 1835 to the year he joined James A Bailey to form the greatest show on earth, *Barnum* tells the story of Phineas Taylor Barnum, defender of 'the noble art of humbug'. Driven by a philosophy and an ambition to make a fortune, he creates the Museum of Curiosities, full of weird and wonderful side shows. P. T. Barnum, the Greatest Showman on Earth, combines razzle-dazzle with charm to sell his humbug to cheering crowds – introducing to the adoring masses, Joice Heth, the world's oldest woman, General Tom Thumb, the smallest man in the world and the Swedish Nightingale, Jenny Lind.

A joyful and moving musical portrait of the nineteenth century's greatest show-biz legend, Barnum is a colourful and dynamic spectacle full of heart and passion. Cy Coleman's and Michael Stewart's rousing score includes, 'There's a Sucker Born Every Minute', 'Join the Circus', 'Bigger isn't Better', 'Colours of My Life' and 'Come Follow the Band'.

Thursday 9<sup>th</sup> – Saturday 11<sup>th</sup> May 2019.

Evenings 19:30 Saturday Matinee 14:00

Tickets £17 from the Majestic Theatre Box Office: 01777 706 866 or online at [www.majesticretford.com](http://www.majesticretford.com)

**Got a computer question? Go to How-To Geek for the answer to everything!**  
<https://www.howtogeek.com/>



## New Year's resolutions – helping others

We all know the regular New Year's Resolutions – cut down on alcohol, do more physical exercise, get a new hobby, but what about volunteering?

Researches stretching back over a number of years have found consistent results showing real long-term benefits to those who volunteer. This can be anything from working for your chosen good cause, to helping in your local services. What is clear is that it is the social interaction with other people that is the key feature in delivering improved health – particularly as we age. Research repeatedly shows that

those involved in voluntary work tend to have lower blood pressures and maintain their mental capacity for longer than those who do not.

If this strikes a chord with you, take a look around, there are many opportunities to volunteer even very locally if you start to look.

We might, at this point, point to two of the major players in the local voluntary scene –

**Bassetlaw Community & Voluntary Service**



(BCVS) based at the Old Priory School in Worksop, right next door to the Priory (see page 20 for more on the Priory).

Closer to home we have **Bassetlaw Action Centre** in Retford's Canal Street.

Both of these are easily contacted (see Page 23) and will give you personal support in identifying opportunities and also help in getting prepared.

Just in case readers think that this is aimed primarily at pensioners, there is ample evidence that parents of young families who are looking to get back into full-time employment will enhance their CVs and prospects if they can demonstrate recent engagement with the voluntary sector. Further, this also applies to young people trying to bolster a UCAS application or get into their first employment. This can, however, be a bit of a challenge those under 16 since many voluntary organisations have minimum age condition driven by legal requirements. However, opportunities do exist for those younger than 16 - see page 24 for an example.

And one final thought: if you broke your New Year Resolution, even before January was out, don't be hard on yourself – research suggests it takes an average of 66 days to form a new habit. If you fail initially, try again – don't wait until 2020 before having another go!

Editor

## Hot baths improve metabolism

Recent research at the University of Loughborough has pointed to improvements in metabolism across a wide range of indicator when a trial group of sedentary, overweight, adult men were subjected to regular periods of hot bath immersion. Better than a shower!

To read the original research article, go to: <https://doi.org/10.1152/jappphysiol.00407.2018>

Editor

**ANDI GRAY**  
PAINTER & DECORATOR



**Happy New Year**

- INTERIOR & EXTERIOR
- QUALITY PAPER HANGING
- DOMESTIC & COMMERCIAL
- QUICK & QUALITY TURNAROUND ON RENTAL PROPERTIES

**07837 370827**

**andigraypropertyservices@hotmail.co.uk**

**A LOCAL TRADESMAN ON YOUR DOORSTEP**

*A professional service to a high standard*



## Why have an allotment?

A brief annual update from the Allotment Association. It has been one full year since we pegged out the 20 plots on our freshly ploughed site, we have had our second AGM this January and members are eagerly awaiting the new growing season. Not that it has been very quiet during the winter as the work on communal areas has been ongoing ever since we started. Thankfully, our work parties have been well supported by members so that by now our site pretty much resembles an allotment site!

Rewinding to last winter - we had a dilemma either to focus on fundraising to reach the target of nearly £15k that was the best quote from the local builders for creating the access, installing a water supply to the site, the gate and a central walk way OR to get creative, start off with the £2k grant we received from our Parish Council, do the work ourselves and fundraise when opportunities arise. The committee voted on the latter, backed by all of the members and we've never looked back.

There is no pretending that getting the water on site was a smooth process. What would have taken experienced builder a couple of weeks took us most of the summer and even up till now we have been putting right what we didn't do perfectly the first time round. Advantages of this rocky path are that by now a good few of us are familiar with the location of the stop tap, with checking for leaks, know a lot more about plumbing supplies than previously and we have established contacts with reliable plumbers in the area.

The summer was hot and dry and the lack of water on site was the biggest challenge to the gardening spirit. This regrettably might have cost us a few members, who left before we really started. However, new members have joined since and currently we have only one full size and one half size plot available to any willing parishioners. To apply, please, contact our secretary Jean Gregory on: **(01777) 700 624** or **jean-gregory@talktalk.net**

During our AGM we asked our members - why had they applied to have an allotment and to reflect on what had they got out of being an allotment holder during the last season. These are some of the answers:

### **Initial reasons for members applying for an allotment**

- To grow fresh, tasty, chemical-free vegetables
- To spend more time in outdoors
- Increase physical exercise
- Educate children about growing food
- Saving money
- Living more environmentally friendly i.e. reducing food miles, composting
- To be more in touch with land and land work
- To be part of food growing community and exchange knowledge about it
- Get to know other community members.

### **What our members thought they had got out of it after the first season**

- Sense of belonging to a strong community group
- Experience of achievement when providing food for family and friends
- Higher quality/tastier produce than from the shop

- Being in touch with other gardeners
- A relaxing, rejuvenating space to go to after work
- 'Magic' of watching the plants grow
- Having 100% home grown veg for Christmas dinner
- Children having hands on experience in growing food and seeing other people do it.



Thinking about it – 20 allotments only occupy ¼ of an old time farmer's field, which once upon a time would have yielded few tons of grain or spuds per growing season. I do rejoice in fact that now this field gives an opportunity to some 50 people stick their hands in soil on regular basis, reconnect with land based lifestyle and grow their own food. Here's to a good growing season to anyone attempting to grow some food of their own in Clarborough this year!

Clarborough and Welham Allotment Association wishes to thank the following organisations that financially supported the set up of the site:

- Clarborough and Welham Parish Council £2000
- Rotary Club £500
- Clarborough Village Ventures £500

And to those people who purchased cakes and plants from our stall at the Village Fair last summer.

**Dace Fenton**

**Editor:** for Association contacts, see your community website's **Local Groups► Allotment Association**.

## Nottinghamshire Healthy Families Programme

This service brings together care provided by Specialist Public Health Practitioners - Health Visitors and School Nurses and their teams to support all children, young people and families in Nottinghamshire. This service is available to any family living in Nottinghamshire with a child between 0-19 years old, expectant mums, and young people up to the age of 19 years attending Nottinghamshire schools.

For much more, go to: [www.nottinghamshire.gov.uk](http://www.nottinghamshire.gov.uk) and type **healthy families** into the search box, then follow the link.

**Editor**



## Local Contacts

**Alcohol Advice Service** (01777) 272 244  
**Alzheimer's Society** 01909 730 886  
 (Bassetlaw Dementia Support Service)  
**Ambulance (Emergency)** **999**  
**Anglian Water** 0800 771 881  
 (report leaks or other service issues)  
**Bassetlaw Action Centre** (01777) 709 650  
[enquiries@bassetlawactioncentre.org.uk](mailto:enquiries@bassetlawactioncentre.org.uk)  
**Bassetlaw Clinical Commissioning Group**  
 (01777) 863 288  
**Bassetlaw Community & Voluntary Service (BCVS)**  
 01909 476 118 [www.bcvs.org.uk](http://www.bcvs.org.uk)  
**Bassetlaw District Council** 01909 533 533  
**Bassetlaw District Councillor (Kath Sutton)**  
 (01777) 709 034 [kath.sutton@bassetlaw.gov.uk](mailto:kath.sutton@bassetlaw.gov.uk)  
**Bassetlaw District Hospital** 01909 500 990  
**(non-emergency)**  
**Bassetlaw Museum** (01777) 713 749  
**Friends of Bassetlaw Museum** [fobm14@gmail.com](mailto:fobm14@gmail.com)  
**Clarborough & Welham IT Group** (01777) 700 918  
[clarboroughwelham@gmail.com](mailto:clarboroughwelham@gmail.com)  
 (also for Newsletter and website matters)  
**Clarborough Parish Council** [clarwelpc@yahoo.com](mailto:clarwelpc@yahoo.com)  
**Parish Council Chairman** (01777) 700 517  
**Clarborough Primary School** (01777) 708 065  
[office@clarborough.notts.sch.uk](mailto:office@clarborough.notts.sch.uk)  
**Clarborough Village Hall bookings**  
[clarboroughvillagehall@gmail.com](mailto:clarboroughvillagehall@gmail.com) 07530 532 185  
**Clarborough Village Ventures** (01777) 700 991  
**Clarborough & District Womens' Institute**  
[clarbdiswi@hotmail.com](mailto:clarbdiswi@hotmail.com) (01777) 949 847  
**Clumber Park** 01909 544917  
**Crimestoppers** anonymously/free 0800 555 111  
**Electricity Supply** failure 0800 056 8090  
 (Western Power Distribution)  
**Elizabethan Academy** (01777) 713 700  
**Environment Agency (water pollution)** 0800 80 70 60  
**Emergency Services (all)** **999**  
**Fire Brigade (emergency)** **999**  
**Food Bank** (Retford - The Well) (01777) 702 344  
**Gas Leak?** Call National Grid immediately: 0800 111 999  
**GP surgeries:**  
     **Kingfisher** (01777) 702 381  
     **Crown House** (01777) 703 672  
     **Riverside** (01777) 713 330  
**Healthwatch Nottinghamshire** 0115 963 5179  
**Idle Valley Nature Reserve** (01777) 858 245  
**IT Champions** 01623 727 600  
**MP (John Mann) Constituency Office** 01909 506 200  
**Nottinghamshire Archives** 0115 958 1634  
[archives@inspireculture.org.uk](mailto:archives@inspireculture.org.uk)  
**Nottinghamshire County Council** 0300 500 80 80  
**Nottinghamshire Country Councillor (Tracey Taylor)**  
 0115 8043 177 [cllr.tracey.taylor@nottsc.gov.uk](mailto:cllr.tracey.taylor@nottsc.gov.uk)  
**Nottinghamshire Police & Crime Commissioner**  
 General enquiries 0115 9670 999 Ext. 801 2005  
**Nottinghamshire Womens' Aid** 01909 533 610  
**PCSO Dave Airey** 07525 226 838  
**(non-urgent, for information only)**  
**Police (non-emergency 'official' contacts)** **101**  
 (be prepared to give county and other location details)  
**Police (emergency)** **Always 999**

**Retford Bus Station** – only via Notts. County Council!  
**Retford Carers Support Group** 07793 268 235  
**Retford Leisure Centre** (01777) 706 500  
**Retford Library** (01777) 708 724  
[retford.library@inspireculture.org.uk](mailto:retford.library@inspireculture.org.uk)  
**Retford Oaks Academy** (01777) 861 618  
**Retford Post-16 Centre** (01777) 861 400  
[office@retfordp16.org](mailto:office@retfordp16.org)  
**Retford Train Station** 0845 722 5333  
**RSPCA National Cruelty Line** 0300 1234 999  
**Severn Trent Water (advice)** 08456 016 016  
**Shelter (Here magazine)** [here@shelter.org.uk](mailto:here@shelter.org.uk)  
**Tuxford Academy** (01777) 870 001  
**Tuxford Mine of Information** (01777) 870 040  
**The Well** (Retford Baptist Church) (01777) 702 344  
[admin@thewellrbc.org](mailto:admin@thewellrbc.org)

## Advertisers

**2Men with a Van** (01777) 702 779 / 0755 000 2242  
**Andi Gray Property Service** 07837 370 827  
**Bookworm** (01777) 869 224 / 07972 367 381  
**Everest Restaurant** (01777 704 000)  
**Goachers** 01427 880 341  
**J&J Electrical** 07771 163 778  
**K9 Cuts Dog Grooming** 07795 116 731  
**Kings Arms Public House** (01777) 708 845  
**North Notts Training** 07855 751 689  
**RBM** (01777) 704 823  
**ReNew** (01777) 702 779 / 0755 000 2242  
**Retford Amateur Operatic Society** – see page 14  
**Rix Fuels** (01777) 279 152  
**Signal Electronics** (01777) 870 665 / 07889 833 410  
**Tony Halford** (01777) 860 704 / 07976 941 407

## Village Hall Bookings

Looking for a  
 modern,  
 accessible,  
 attractive venue  
 for your  
 birthday party  
 or family  
 gathering?  
 Look no further!



Clarborough  
 Village Hall's entrance is directly opposite the Kings Arms  
 on the A620. A spacious car park is to the rear of the  
 building – follow the sign on the entrance driveway.

The Village Hall itself provides a spacious hall, adjoining  
 function room, modern kitchen, a small bar/kitchen, toilet  
 facilities with baby changing and disabled access and toilet.  
 The building has been subject to ongoing upgrade with,  
 most recently, a completely refurbished floor to the main  
 hall – see above.

We have slots available for children's parties and other  
 such events at weekends, so why not get in touch!  
 Our rates are surprisingly reasonable - £12.50 per hour for  
 casual hire and an amazing £40.00 for 4 hours for a  
 children's party booking. This usually allows 1 hour setup, 2  
 hours for the party and 1 hour for tidying up.  
 Please feel free to contact us on 07530 532 185 or email us  
 on [clarboroughvillagehall@gmail.com](mailto:clarboroughvillagehall@gmail.com)

## Call for the Wild!

Nottinghamshire Wildlife Trust are calling for young people aged between 13 and 18 years old to join their **Young Rangers** to get stuck into conservation activities in the north and south of the county.

The Trust already runs a programme of regular sessions at three locations; the much loved Attenborough Nature Reserve near Beeston, Skylarks Nature Reserve in Rushcliffe and **Idle Valley Nature Reserve** near Retford. The sessions provide not just a social aspect but hands on practical taster sessions ranging from getting involved with the conservation grazing sheep, removing invasive plant species such as 'balsam bashing' and the opportunity for the young people to join as regular volunteers.

Laura Bacon, Audience Development Officer (Youth and Community) at Nottinghamshire Wildlife Trust says, "We are really proud of our young people and what they have achieved so far in the south of the county and we are looking to expand the group in the north at the Idle Valley Nature Reserve near Retford."

Laura continued, "Thanks to support from players of People's Postcode Lottery, Nottinghamshire Wildlife Trust are able to run these activities for young people to gain valuable hands on experience of conservation activities from bird ID and surveying to scrub clearance, coppicing and fencing. Not only does it help Nottinghamshire Wildlife Trust manage their nature reserves for wildlife and people we hope it helps to develop a love for nature and the environment and inspires the next generation of conservationists to go on to explore a career in the field."

Although we currently are unable to accept any applications for work experience placements for young people these sessions can help to get practical experience for including on CV's or just to try something new. Work experience placement opportunities may come available in future years and will be advertised via the website and social media as and when they do.

For more information about Nottinghamshire Wildlife Trust's Young Rangers, visit <https://www.nottinghamshirewildlife.org/discover-and-learn/young-rangers> and get in touch with Laura Bacon to register to take part.



13 year old Joanne Barnes has been coming to Attenborough Young Rangers for over a year and really enjoys getting stuck in. She really enjoyed this session where we had to count our conservation grazing flock for our shepherdess whilst also doing scrub control in the same field.

## What Is The Staying Well Expert Patients Programme?

The Staying Well Expert Patients Programme is a 6 week FREE 'chronic disease self-management course' (CDSMC), a government initiative to help people living with long term conditions maintain their health and improve their quality of life through a self management course led by someone else with a long term health condition. To book onto one of our courses please ring **Bassetlaw Action Centre** on **01777 709 650**.

Monday 25<sup>th</sup> February 09.30-13.00 week one and then weeks 2-6 09.30-12.00 at Bassetlaw Action Centre  
Monday 25<sup>th</sup> February 13.30-16.00 at Bassetlaw Action Centre

Wednesday 27<sup>th</sup> February 09.30-12.30 week one and then weeks 2-6 09.30-12.00 Larwood surgery Worksop.

## Local Novel Writing course

Stephen Booth (our highly successful local author) is holding a series of novel writing courses. The 6-week course starts on 2<sup>nd</sup> February at Retford Fire Station. For more details refer to Stephen's website at <http://www.stephen-booth.com/news.htm>

Editor

## Clarborough & Welham Parish Council Meetings

14<sup>th</sup> January 2019

25<sup>th</sup> February

1<sup>st</sup> April (no kidding!)

Meetings open 19:00 in Clarborough Village Hall

Agendas are always posted at least a week in advance on notice boards and on our community website where you will also find approved Minutes and meeting dates through to January, 2019.

## Newsletter 2019 deadlines

8<sup>th</sup> April (Summer issue)

8<sup>th</sup> July (Autumn issue)

## Newsletter Advertising rates (for 4 consecutive issues)

Full page	£125.00
Half page	£75.00
Quarter page	£45.00
This size	£25.00

Contact Val (01777) 708 181

Special rates for 'one off' insertions

Yet again, our greatest thanks go to our tireless (!) team of volunteer distributors.