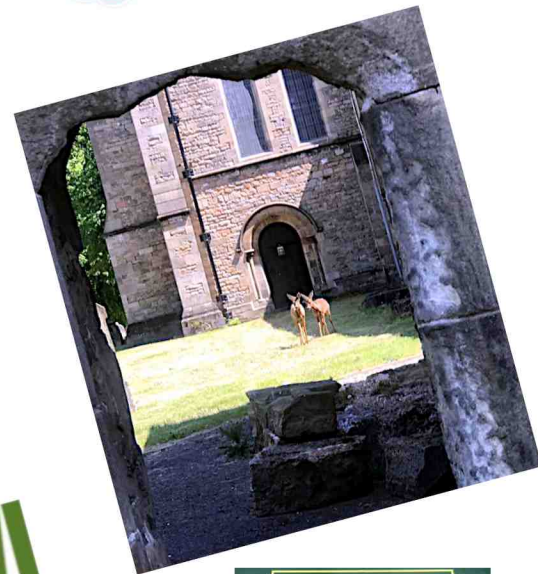


# Clarborough & Welham

## Newsletter

### Autumn 2020





# CONTENTS

## Autumn 2020



### Features

**C W** Produced  
**I T** by  
**GROUP** Clarborough  
& Welham  
IT Group with  
generous support  
from Clarborough  
& Welham Parish  
Council and  
distributed by our  
tireless team of  
volunteers.

Material published  
in this Newsletter  
does not  
necessarily  
represent opinions  
of the Editor.  
Material submitted  
without full contact  
details will not be  
published. All  
publication  
decisions remain  
the responsibility of  
the Editor alone.

#### Battle of Britain remembered

6



#### Wildlife enjoying lockdown

7



#### Attack helicopters over Clarborough!

10



#### Why do some Retford streets have 'gate' names?

14



#### Retford Heritage Day goes virtual

16



#### Post-16 T-Levels are coming

19

#### Wildlife under threat



20

#### Become an instant expert!

21

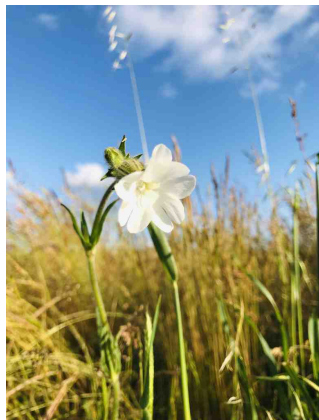


**Editor's note: Because of  
Covid-19, do check any  
events in the following  
articles with organisers  
before setting out!**

## Clarborough Parish Pasture

It has been good to see that the Parish Pasture footpath has been used so extensively during the exercise periods of the 'lockdown' due to Coronavirus.

The 'lockdown' has meant that for many weeks it was not possible to do any work on the Parish Pasture. With the easing of those restrictions, however, it has been possible to carry out some urgently needed work. This has involved strimming to the west of the footpath and full cutting to the east of the footpath.



White Campion

Both regimes are intended to control the growth of Wild Oats which appeared last year and dominated much of the Pasture. Unfortunately the full cutting system cuts not only the Wild Oats but most of the wildflowers. This is necessary as there is so much of the Oats throughout a large area of the east side. It will be repeated as needed throughout the summer.

We can be more selective on the west as there are fewer

Wild Oat plants on that side. This has the advantage of allowing the wildflowers to grow, with Ox-eye Daisies being prominent, Red & White Clover, Red & White Campion, Vetch, Yellow Rattle (in abundance) and Poppies all either having been and gone, or still showing, amongst many wild grass species.

This cutting process will have to continue for several years – maybe even up to 10 – before the Wild Oats are completely eradicated!

Our trees have, with the exception of about 5, thrived despite several periods of drought. This has been aided by watering during longer spells without rain. When a recent count was made we were astounded that about 120 new trees have been planted since 2018. A number of these were planted as 2-3 metre tall trees but many were planted from 40 cm whips and are now upwards of 1.5m tall. This is in addition to over 30 trees which were already present.

90 metres of new hedges added a further 500 'hedging whips' and these are also thriving.

All in all – a real success story!

In order to help the development of the Parish Pasture as a mixed-use area we are now asking that users keep to the

main Public Footpath and the two walkways on each boundary of the Pasture. Cyclists should only use the main footpath.

***Please do not walk in the long grasses on the Pasture, or in the two woodlands (Birch and Ash) or the wildflower scrapes as they all contain many wild flowers and other wildlife. Do not allow your dog(s) or children to go in these areas.***

This will allow the wildflowers, the two woodlands and the wildflower scrapes to develop into natural habitats in coming years. There are many birds, butterflies and insect species as well as multiple species of wildflowers on the Pasture. Again, a real development success.

***If you can spare us some time occasionally each week to help with our Parish Pasture, please see below.***

**Paul Willcock  
Parish Councillor**

**Chairman, Friends of Parish Pasture Group (FoPP)**

## Wanted!

**1 hour (or more if possible!) of your time regularly**

**Please come & help us maintain & develop your Parish Pasture to improve your Parish for all!**

**Please contact:  
friendsofpp@gmail.com  
or 01777 705 540**

## Neighbourhood Alerts

With reported incident of attempted – and successful – online scams it is really worthwhile to enrol (it's FREE!) with **Neighbourhood Alerts**.

Look at the **Law and Order ► Neighbourhood Alert** page of our community website. This has a link to **East Bassetlaw Community Alert website** about halfway down the page – highly recommended!

Remember, no legitimate organisation will contact you 'out-of-the-blue' and particularly would never ask you for personal details such as account details, etc.

**Keep an eye open on behalf of vulnerable folks too.**

**Editor**



Poppy at Sunset



Sanfoin





## Bassetlaw District Councillor

### Ben Sofflet

I'll not rehash the various updates and information contained in this newsletter from various contributors, but suffice to say, I hope that you are all well, and for those of you who have been personally touched by grief, during this awful (and sadly ongoing) outbreak, may I offer my sincere condolences.



The community spirit and selflessness displayed by residents has been truly inspiring, and I have been very proud of the professionalism and hard work of Council employees over the last few months, and our ability to maintain essential services, which hasn't been the case across all Districts in the county.

Communication and connectivity has become increasingly important as we've learnt to cope with the ever changing circumstances that we find ourselves in, and you can now sign up for communications directly from the council, by entering your email when you go on the council website:

**www.bassetlaw.gov.uk**

**M: (0771) 716 154**

**E: ben.sofflet@cillr.bassetlaw.gov.uk**

## Meat Loaf recipe

### Ingredients (serves 4)

Sausage meat 500g  
Small brown loaf  
Small onion finely chopped  
1 Egg  
Mixed dried herbs 1 tbsp  
Garlic – finely chopped 3 cloves  
Butter

### Method

- Cut the top horizontally from the loaf, just at the point at which the top curves from the sides.
- Scoop out the contents of the loaf leaving it hollow.
- Break up the bread removed from the loaf into small pieces. Put these into a large bowl.
- Add all of the ingredients except butter to the bowl.
- Mix contents of the bowl thoroughly by hand.
- When well mixed, spoon the mixture back into the loaf. Reposition loaf 'lid' and tie with string.
- Liberally butter the top of loaf and place on a baking tray.
- Bake in the middle of oven (Gas Mark 5/190°C) for 45-60 minutes depending on loaf dimensions.

### Serving

Either slice directly from the oven or allow to cool before slicing. Good with either salads or hot vegetables.

**[Right] While Clarborough Village Hall remains closed, your Post Office will only be open on Monday mornings. Also, note the change to Wednesday opening hours when back to 'normal'.**

## Clarborough Village Hall remains closed

From the start of the general lock-down of the Covid-19 pandemic readers will have noted that our village hall has been closed. One exception has been the Monday morning opening for our community Post Office – see details below.

Clarborough & District Community Association (CDCA) are managers of our village hall and have been keeping a close watch on national guidance for such halls. This information is consolidated by ACRE (Action with Communities in Rural England) whose most recent **Re-opening Village and Community Halls post COVID-19 closure Issue 3 – Current at 6<sup>th</sup> July 2020** document currently forms the basis of our planning. A copy of this full, 29 page, document is available on our community website's **Local Groups ► CDCA - Village Hall** page.

Unfortunately, as far as regular hall users are concerned, the above document makes it clear that the majority of such groups are still advised not to resume. This is generally because they either involve indoor exercise or are largely composed of elderly or senior individuals who remain at greatest risk on infection.

CDCA carried out deep cleaning of the hall during the first part of lock-down and continues to monitor the national scene with the hope that reopening of our hall will be possible. As soon as that does become possible we will publicise details and also contact all regular users. In the meantime it would be helpful if organisers of regular groups as well as anyone thinking of booking the hall to download the ACRE leaflet mentioned above to familiarise themselves with the issues and strategies to enable resumption of activities.

## Covid-19 Vaccines

Vaccines are under development around the world to counter the current crisis. Besides the science of actually developing a vaccine, there are several steps that have to be undertaken to make sure they are both safe and effective. Generally trials take place on animals first, then on volunteers before going 'live' across the population. Traditionally these steps have taken several years but as we went to press, an Oxford University trial was described as 'highly promising'. Lets keep our fingers crossed – and keep washing our hands!

Editor

## Clarborough Post Office

### Opening hours:

<b>Monday:</b>	<b>09:00-12:30</b>	<b>All usual main P.O. services</b>
<b>Tuesday:</b>	<b>09:00-12:30</b>	
<b>Wednesday:</b>	<b>09:00-12:30</b>	
<b>Thursday:</b>	<b>Closed</b>	
<b>Friday:</b>	<b>09:00-12:30</b>	

Halford Room, Clarborough Village Hall

Main Street, Clarborough, Retford, DN22 9LN

**If you have any queries, do not hesitate to contact:**

**Michael C.Carnall 07836 375 808 / 01427 884 469**

**michaelcarnall@yahoo.co.uk**



## Public Rights of Way

Criss-crossing the parishes of Clarborough & Welham, Hayton and Clayworth is an extensive network of Public Rights of Way.

This network is shown on our community website ([www.clarborough-welham.org.uk](http://www.clarborough-welham.org.uk)) in the **Out-and-About ► Footpaths** page. Maps with numbers for identification are provided under Clarborough & Welham Parish Council's Crown copyright, Ordnance Survey licence number 100054850, 2020 and the equivalent Hayton licence number 100053762. Each parish has its own unique set of footpath identification numbers. There are footpaths, bridleways and byways, all having different uses. The designations are shown on the maps and are described as follows:

### Footpaths

Only walkers or pedestrians with prams are allowed to use the footpaths.

In some cases eg the landowner, Canal and River Trust, has agreed that cyclists may use the Chesterfield canal towpath.

Cyclist must always give way to pedestrians and announce their presence if approaching from the rear and also dismount when passing pedestrians.

### Bridleways

Walkers, cyclists and horses may use these Public Rights of Way.

**Byways** sometimes designated BOAT [Byway Open to All Traffic]

These may be used by pedestrians, cyclists, horses [and carriages] mechanically propelled vehicles if correctly taxed, insured and the driver has the appropriate licence.

Historically, many Public Rights of Way are used for access to a place of work e.g. farmers' fields whatever their designation.

Please abide by the Country Code when walking, cycling or driving along the Public Rights of Way. Most of the network crosses private land and users should not stray from the designated line of the footpath, bridleway or byway.

The network is maintained by Nottinghamshire County Council.

Should problems arise or you need more information, please contact Parish Footpath Warden, Howard Oates on: 01777 869 617 or [howardoates593@btinternet.com](mailto:howardoates593@btinternet.com)

## Fantastic Website for walkers!

**Walking in Nottinghamshire** [www.walkinginnotts.co.uk](http://www.walkinginnotts.co.uk) is a website packed with useful information for walkers.

With hundreds of walks to download and print, free, it also has books of walks, contact details for all the walking groups in the county and much more. Whether you want to walk on your own or with a group all the information is there in one place.

John said 'There is so much walking information on the web but it is difficult to find. **Walking in Nottinghamshire** (part of the Walking in England suite of websites [www.walkinginengland.co.uk](http://www.walkinginengland.co.uk)) has brought it together in



one place so whether you are walking from home, or away on holiday, you will be able to find a walk suitable for you'.

With walks from half a mile to twelve miles plus long, and a note of suitability for pushchairs and wheelchairs, everyone can find a walk to enjoy.

So home or away, check out the websites and get walking!

John Harris

[www.walkinginengland.co.uk](http://www.walkinginengland.co.uk)

email: [john@walkinginengland.co.uk](mailto:john@walkinginengland.co.uk)

## Latest news – community website

Here we highlight a few of the multitude of news items to be found on your community website's home page.

**DVLA** are not accepting paper applications – website has online links to use instead.

**BCVS** contacts for the widest range of supports to our community during Covid-19.

## LAWNMOWERS Tony Halford



**Plant & Grass  
Machinery  
Specialist**

36 Albert Road, Retford, Notts. DN22 6JB

**Tel: (01777) 860 704**

**Mob: 07976 941 407**



## Lawns Cut

**Lawn Cutting & Gardening Service**

- Lawns cut every 7-14 days
- Cuttings bagged for your disposal
- Hedges
- Pruning
- Taming work also undertaken

For free no obligation quote, please call:  
0755 000 2242 or 01777 702 779

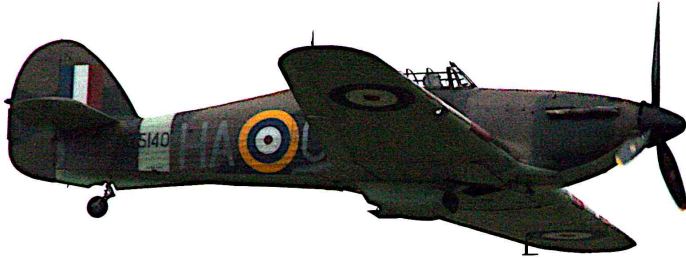
"You'll be amazed at our low prices!"



## 80<sup>th</sup> Anniversary of the Battle of Britain

Recent news programmes may have given the idea that the Battle of Britain has an 'official' British date of 10<sup>th</sup> July - 31<sup>st</sup> October, 1940. German and others sources expand this to include widespread 'nuisance raids' on coastal shipping starting in June, 1940 right through the the end of the 'Blitz' in May, 1941.

As a keen observer – and participant in – things aviation I have been aware over the years of how the media has progressively taken to portraying the Supermarine Spitfire as the winner of the Battle; this is not true since for much of the Battle, the RAF's main fighter was the Hawker Hurricane...



© Greg Herdman 2015

During the **Battle of Britain** there were 32 Squadrons with **Hurricanes** and only 19 Squadrons of **Spitfires**.

**Hurricanes** shot down more aircraft than all other air and ground defences (anti-aircraft guns) put together.

Having said that, the Spitfire turned out to be a more advanced – and developable – design and rapidly replaced Hurricanes in front-line service. See page 19 for more.

Editor

# SPAR



Can I start by thanking the Village for their fantastic Community Spirit in supporting myself and my team through these difficult times.

I would have never expected my job to change in a matter of days. 23<sup>rd</sup> March 2020, the day of my daughter Olivia's 18<sup>th</sup> Birthday, and watching the announcement by Boris Johnson that evening was a harsh reality of what we all feared. A day we will never forget.

We had already noticed panic buying by people we had never met before. Having to limit stock and monitor people coming into the store. Once we understood the situation we decided to help those who had to self-isolate by delivering leaflets offering them a Delivery Service. These leaflets were kindly handed out by many Village volunteers. Offering this service we felt many would benefit and feel they were not alone. Our Car Collection Service also worked well. The customer collected their shopping in the safety of their car with no contact.

We may have struggled with some items of stock - but not for want of trying! Spending hours sourcing it from other companies. This for me has been a huge eye-opener. Trying to understand the "new norm" as they say.

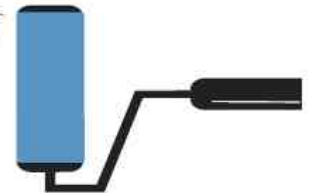
Finally a huge *Thank you* to my team. Without them I don't know how we could have done it. We have been through very difficult times when I've wanted to give up.

To our customers old and new we appreciate your patience and understanding getting used to the "new norm"

Lucy Rose

## ANDI GRAY

PAINTER & DECORATOR



- INTERIOR & EXTERIOR
- QUALITY PAPER HANGING
- DOMESTIC & COMMERCIAL
- QUICK & QUALITY TURNAROUND ON RENTAL PROPERTIES

# 07837 370827

andigraypropertyservices@hotmail.co.uk

**A LOCAL TRADESMAN ON YOUR DOORSTEP**

*A professional service to a high standard*





## Flood Prevention and Flood Management Update

The 3 Flood Wardens, Craig Done, Mervyn Waring and Andrew Avery have been “locked down” and do not have a lot to report of their own initiatives.

However, Josh Wells who works for Trent Rivers Trust has continued with the **Natural Flood Management** initiative on behalf of Nottinghamshire County Council. Josh will be visiting the parish on 29<sup>th</sup> July to make further progress with landowners and we hope to hear more specific details of the plans.

As far as the “**engineered solution**” to the flooding that has occurred to properties in Clarborough, Graham Smith the Principal Officer - Flood Risk Management at NCC has confirmed he has the options appraisal work undertaken by Bassetlaw and will decide on its merit. This is for a new culvert from Main Street across the fields and under the canal. We have been told Bassetlaw has £180,000 available as a contribution to the scheme. However, the scheme will need support by NCC and the Environment Agency if it is to prosper. Now that the Flood Department at Bassetlaw has been closed, it also needs a project lead. Graham has suggested a meeting to discuss both of these aspects of our flood prevention and flood management strategy. We look forward to this as soon as it is feasible. If you have any questions or points of view please email [candwflood@btinternet.com](mailto:candwflood@btinternet.com)

Andrew Avery, Parish Councillor

**“Do one thing every day that scares you.”**

*Eleanor Roosevelt (1884-1962)*

## Wildlife enjoying our lockdown

The following pair of photos, taken by BCVS staff, show two deer feeling very comfortable in Worksop Priory...



...while that below was taken by Clumber Park's lake on one of the rare sunny days in early July.



## Retford Auto Centre Vehicle Maintenance & Repair.

### Martyn Gregory

Retford Mechanic with 20 years experience

[enquiries.retfordautocentre@outlook.com](mailto:enquiries.retfordautocentre@outlook.com)

**01777 800261**

**Opening Times:**

**Monday-Friday:**

**08:30 - 17:30**

**Saturday:**

**08:30 - 12:30**

**121-123 Grove Lane, Retford, Notts, DN22 6ND**



Servicing Brakes Air conditioning Diagnostics Clutches Exhausts Suspension Tyres & Balancing  
Wheel Alignment MOTs can be arranged.  
I look forward to welcoming you!



## Your Health Your Way

Your Health  
Your Way



We are here to help all residents of Nottinghamshire (excluding Nottingham city) get more active, eat healthier, manage your weight, drink less alcohol and stop smoking. We offer realistic and practical support for people to make life long healthy behaviour changes.

Individuals can access the following services:

- Weight management (virtual group clinics and one to ones via telephone)
  - i. Adult weight management (virtual group clinics and one to one telephone support)
  - ii. Family weight management (telephone support)
- Smoking cessation (telephone)
- Physical activity (bespoke recorded activity sessions are emailed to clients to complete at home)
- Brief alcohol support (telephone support)

Referrals can be made from health professionals and GP practices via the F12/Ardens function and both third party and self-referrals can be made online by visiting Your Health Your Way Notts. <https://yourhealthnotts.co.uk/> or giving us a call on **0115 772 2515**.

We will be able to provide both one to one and group based support via telephone and online support (Zoom). This will include free bespoke physical activity videos suitable for all abilities by our healthy lifestyle advisors.

Lucy Turner



## workingwin<sup>✓</sup>

### An Update from Bassetlaw Working Win

Over the last few months we have been supporting our customers, by phone, video, and email which saw us double the amount of support we were able to offer. With restrictions easing we are now looking to resuming face to face appointments outdoors and supporting even more people to work in your local businesses.

The world of employment is changing rapidly right now, whether you need support for your current employees or are looking to recruit new staff, call us on 07471 992 445.

### Your Working Win Team

**Work & Wellbeing Manager: Laura Bennett**

[l.bennett@syha.co.uk](mailto:l.bennett@syha.co.uk)

**Senior Employment Specialist: Sarah Farncombe**

[s.farncombe@syha.co.uk](mailto:s.farncombe@syha.co.uk)

While things are changing daily we want you to know that we are still here to :

- support your business with health & wellbeing resources
- help you fill any vacancies that you may have.
- advertise living wage vacancies on our free Applicant Tracking System: <https://jobs.findgoodwork.co.uk/en>
- support our talented and experienced customers to find employment
- work alongside government guidance to support local businesses.

We're now also taking referrals for our **Good Work** service, so if you currently receive support for your mental health and would like further support to get a job visit <https://www.findgoodwork.co.uk/> for more information.

**Sarah Farncombe**

# Honey & Fig

-----  
Breakfast - Lunch - Afternoon Tea

Great Food - Strong Coffee

41 Carolgate Retford  
DN22 6BZ

@honeyandfigretford



01777 948610





Since the 23<sup>rd</sup> March, the beginning of lockdown, school has adapted to a more online interactive method of schooling. We have been able to provide all the children with online lessons,

activities and PE challenges, keeping them fully engaged with their teachers whilst they are at home! We've all had to adapt to new ways of working and I want to take this opportunity to say what an amazing job you have all been doing supporting your child's wellbeing and learning during this time.



Clarborough has always remained open to keyworker children and has provided them with a safe and fun environment during these unusual times. The keyworker children have enjoyed carrying out many fun activities including gardening, scavenger hunts, crafts and creating beautiful rainbow creations!

The teachers have been astounded with the fantastic virtual learning and work produced by the children through the online learning platform, Seesaw. It has been a delight for all the teachers to see all the videos, photographs, experiments, written work and drawings which have been sent to them! The children have



covered such wide range of topics from VE Day, Captain Tom Moore, Ancient Greeks to rainbows! On Monday 8<sup>th</sup> June, Clarborough opened its doors to Nursery, Reception, Year 1 and Year 6 children and it was fantastic

to welcome back more children to our school. We have been so busy!

Each of our class bubbles have access to indoor and outdoor space, computing equipment and creative materials and even their own personal tray of resources. This has enabled the children and adults to get on with their learning and playing safely. It has been so successful. Our amazing children have shown how truly resilient they are by getting into their new routines and following the new

rules in school so quickly and easily. Staggered starts and ends to the day mean that children and parents can arrive safely to the school site whilst maintaining social distancing. This will continue when all the children return in September.

Staff have been amazing by thinking creatively and ensuring that the children still get access to an engaging curriculum whilst providing an environment that is safe and secure. The children who are still learning remotely are still busy posting their amazing work on Seesaw. We are also particularly proud that we featured on the front page of the Nottinghamshire County Council's *Hands up!* Newsletter. This newsletter celebrates good practice in schools across the county and we are so proud to celebrate our terrific achievements and resilience throughout this period!



Looking forward towards September, we have been very busy planning and thinking of new ways in which we can make the transition work. We have produced a detailed 'Return to School' handbook and sent this out to parents and carers, produced welcome videos for the children to introduce them to their new teachers and classrooms, 'Meet the Teacher' meetings are being set up for our new Nursery and FS2 children, well-being questionnaires will be going out to all children and lots more!

Year 6 children have also been busy planning for their Leavers Assembly. It is going to be slightly different this year but still just as fun, emotional and heart-warming as ever.

We are so proud of our team of staff and children here at Clarborough for their continued commitment, resilience and strength. We are so proud of you all **#TeamClarborough**. Enjoy your summer and we can't wait to see everyone in September!

**"The greatest glory in living lies not in never falling, but in rising every time we fall."**

*Nelson Mandela (1918-2013)*

## 2 MEN WITH A VAN FOR HIRE

Single items to Full Houses

**All jobs considered**

**LOW PRICES**

**Mob: 0755 000 2242**

**or Tel: 01777 702779**

South Street Storage... Secure, Affordable Solutions







Well! Hasn't Covid-19 put a spanner in the works? Instead of our usual programme of meetings and outings we, like everyone else, had to batten down the hatches and support each other as best we could. Chatty phone calls, little notes pushed through doors and a friendly wave from a safe distance have been so important for keeping up our spirits. At the time of writing some members are enjoying our series of (socially distanced) summer evening strolls and the committee are working hard to think of activities that we can all enjoy within the current guidelines. Hopefully it won't be long before our meetings can begin again. For the latest information about our activities keep a watch on our facebook page, the village website and the various notice boards around the villages. See you soon!

## Attack Helicopters over Clarborough!

While enjoying the sun (remember that?) back on June 30<sup>th</sup> your editor was surprised by a pair of low flying helicopters which turned out to be British Army Air Corps AgustaWestland Apache Mk1 attack helicopters. As the pair continued to circle Clarborough your editor rushed for his camera with the result show here...



These are licence-built versions of Boeing's AH-64D Longbow. The order for 67 of these was placed by the British Government in 1996 and these were delivered between 1998 and 2004. They are currently due for replacement by a Mk2 version from 2023/24. The main features visible in this shot are the 30mm chain gun below the forward cockpit capable of some 625 rounds per minute. Above the main rotor is the container for the Longbow radar which provides a surveillance and attack system. How we came to have a pair of low flying Apaches over Clarborough remains a mystery!

Editor

## Clarborough and Welham Allotment Association

Well, it's been an unusual few months as it has been for all of us, but one thing that has been made clear to the plot holders is the importance of our allotment during these trying times. At the height of lockdown, people who didn't necessarily have lots of outdoor space had somewhere they could go and be outside and be able to easily distance themselves from others, also the importance of being able to grow fresh food that you can take straight from the ground to your table in minutes was highlighted. I think we all appreciated the positive impact that working with the land can have on mental health in difficult times.

There was a stark contrast in the plots for a variety of reasons, those that had been furloughed had weeks of spring sunshine and their plots have never had so much attention, contrasted with those that were stuck working away who couldn't get back at all, with those that were key workers or retired not seeing that much difference in the time available, but all in all the allotments is looking lovely this Summer with the first crops starting to be harvested. In other news we released 5 rescue Hedgehogs from 7<sup>th</sup> Heaven Rescue, these had been rehabilitated over the winter and are now ranging freely over the allotments and gardens nearby, the low numbers of cars in this area will hopefully help them thrive, feel free to give them a little catfood and water if they visit you, not too much though as they are helping us keep the slugs down! And please drive carefully. Along with the breeding success of local Song Thrushes attacking the snails we have seen a definite reduction in slugs and snails as our plots mature and we restore the natural balance.

All of the plots are now full and there is a short waiting list if you want to get in touch, email ;

[ClarboroughAllotmentAssoc@oulook.com](mailto:ClarboroughAllotmentAssoc@oulook.com)

Pete Tutalo

## Parish Council reopens Play Park with conditions

After taking advice from NALC Clarborough and Welham Parish Council are pleased to inform you that the play park is now open. However, to use the equipment there are strict guideline to follow (see below).

**Play equipment is limited to 1 child per piece.**

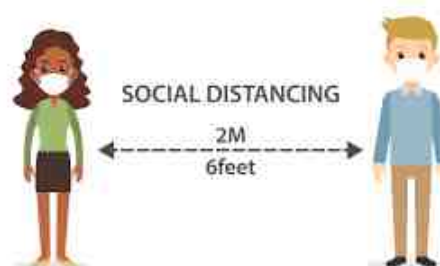
**Limit of 1 parent/guardian to provide supervision.**

**Always respect social distancing (maintain 2 metre apart).**

**Parents, guardians and users to clean the equipment before and after use (the virus remains active).**

**Sanitising/hand washing before and after touching gates, play equipment etc.**

**No food or drink to be consumed in the play area.**



In addition the Parish Council will spray the equipment at least once a week with disinfectant.

Phil Gibson

Chairman, Clarborough & Welham Parish Council



## Bassetlaw Action Centre responds to Coronavirus emergency

Our services changed overnight as we went into lockdown in March with the majority of our administration and management team working from home. Our staff and volunteers are continuing to offer support to our most vulnerable and elderly clients to ensure that they are receiving the support they need which includes an essential shopping service and telephone safe and well checks.

We are focusing all of our resources to deliver a service to our community for as long as possible during this difficult period. This has meant we have implemented some changes to our service delivery as follows: Our befriending service is now a telephone befriending service, our Staying Well Courses are now virtual and our minibus trips cancelled until further notice. Our Stroke and Neurological team, Housing Advice and Benefits Support is continuing through telephone contact and we are maintaining as much of our Home Support Service as possible at this stage. At this point we are still taking referrals for anyone needing support and will continue to do so while ever capacity allows. We have also launched GOGA Bassetlaw and are encouraging people to get active and stay active at this time.

Our telephone lines remain open from 09:00 to 13:00 Monday to Friday (an answerphone service is available outside of these times) and all staff are still contactable by telephone or email as normal. We are very grateful for the dedication and support from all of our staff and volunteers who are committed to providing as much help and support as possible during these unprecedented times.

Working with Bassetlaw District Council, the NHS and other partners, 'Get out get active' (GOGA) will support people with long term conditions to help people to access physical activity linked to the Action Centre's *Staying Well Programme*.

Through **GOGA** Bassetlaw Action Centre intends:

- Building on the Staying Well programme's approach of action planning so that physical activity is built in and remains a person centred approach in assessing individual need.
- Building on the organic growth of social groups that have developed already from the Staying Well programme, using passionate, motivated individuals who with training and support can continue to support people into physical activity and potentially lead groups themselves.
- Developing a local network of strategic partners across Bassetlaw to understand and address physical activity inequalities across Bassetlaw.

For more information please call Bassetlaw Action Centre on 01777 709 650 or e-mail [goga@actioncentre.org.uk](mailto:goga@actioncentre.org.uk)

**Lynn Tupling**  
Chief Executive



## BOOKWORM

**ORDER NEW BOOKS, OLD BOOKS  
DVDS AND CDS**

Free delivery is made by Angela & Paul Meads who ran Bookworm in Retford for over 25 years

All local villages are included in our personal service from Elkesley to Walkeringham, to Rampton, and everywhere inbetween.  
Just phone us on 01777 869 224



**Angela & Paul look forward to hearing from you**

**YOUR LOCAL  
BOOK  
EXPERTS**  
are only a phone call away ...





## Retford Railway Station

Retford Railway Station is now a grade II listed building - this includes the station buildings on platform 1 and the piers at the entrance to the car park with their associated walls. It does not include the brick wall bordering the car park along station road.

### LNER

The latest travel information can be found here:  
[https://www.lner.co.uk/travel-information/coronavirus-travel-information/#cid\\_27396\\_0\\_](https://www.lner.co.uk/travel-information/coronavirus-travel-information/#cid_27396_0_)

### Northern Railways

Northern says customers can return to the railway with confidence:  
<https://media.northernrailway.co.uk/news/northern-says-customers-can-have-confidence-in-cleanliness-of-the-railway>

If you are interested in becoming a **Friend of Retford Station**, please contact Cllr Jim Anderson on [jim.anderson@cllr.bassetlaw.gov.uk](mailto:jim.anderson@cllr.bassetlaw.gov.uk). You don't need to know about trains – there are many different ways that members of station adopter groups support their local station – why not have a chat to Jim and see how you can get involved.

*"I have a dream that one day little black boys and girls will be holding hands with little white boys and girls."*

*Martin Luther King Jnr (1929-1968)*

## SITUATIONS VACANT Looking for a SPARTIOC??

As the nation moves out of lock-down and towards normality are you looking for a "Spare Time Occupation"? If so then Clarborough & District Community Association is seeking a local resident to join the team which manages the Village Hall.

As the successful applicant you will be invited to join the current management team which usually meets four times a year in the Village Hall. Given so few face-to-face meetings team members usually communicate by telephone or e-mail.

Candidates will need to have a couple of hours to spare each month and ideally have experience in solving problems and managing outcomes.

The Village Hall is a modern, well built venue, and the management team has the responsibility to monitor its condition and manage its maintenance programmes.

Although a busy hall, the management team is totally committed to ensure the hall's full use, and to ensure its long-term financial viability.

So if you have a few spare hours each month, want to add value to your community, enjoy the company of busy active people, have initiative and enthusiasm, and are prepared to work for the "job satisfaction" this position offers, then please contact...

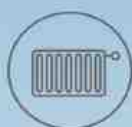
David Dawson phone 01777 704 224 or

[dawsondavid@yahoo.com](mailto:dawsondavid@yahoo.com)

Greg Herdman phone: 01777 700 918 or  
[clarboroughwelham@gmail.com](mailto:clarboroughwelham@gmail.com)



*Your local Heating Oil & Oil boiler Servicing supplier*



Heating Oil



Aga Cooker Fuel



K+ Premium  
Heating Oil



Oil Boiler Servicing



Aga Cooker  
Servicing



Fuel Tanks



Oil Boiler Insurance

Contact our friendly team today on Call **01777 279152** or visit [www.rix.co.uk](http://www.rix.co.uk)



## Deafened & Deaf (D/D), Hard of Hearing (HoH)

The wearing of face masks is an entirely sensible precaution and a necessary one where a 2 metre social distance cannot reasonably be maintained (please remember these are mandatory on public transport). This does cause difficulties for the Deafened & Deaf, and Hard of Hearing, who often rely on an element of lip-reading to understand what is being said to them. Often this is also a problem of awareness amongst shop/café staff etc. Retford Business Forum have an offer from a qualified deaf awareness teacher, Ruthy Fletcher, to carry out training for companies (for a small fee) – she will also supply posters etc to create awareness. Further information can be found at: [www.supportthedeafpeople.co.uk](http://www.supportthedeafpeople.co.uk)

### Some items that might be of interest:

Possible see-through mask suppliers etc – for further information please contact:  
[ruthy@supportthedeafpeople.co.uk](mailto:ruthy@supportthedeafpeople.co.uk)

### Breathe Easy (Face Mask)

Breathe-Easy agreed to provide the clear lip face mask to deaf people.

10% discount - £14.40 Lip-reading behind the head strap

15% discount - £13.59 lip-reading behind the ear strap.

### Seahawk Ltd (Face Mask)

The price is £12.55/ea. including VAT, Orders of 5 or more is postage free.

[sales@seahawk-apparel.com](mailto:sales@seahawk-apparel.com)

[karen.hunter@scottgroupltd.com](mailto:karen.hunter@scottgroupltd.com)

### Communication Card

Communication Cards/Tips for you to show hearing people with full face mask that you need help – to ask them if they can do basic sign, gestures/points. Write things down.

Please contact

[ruthy@supportthedeafpeople.co.uk](mailto:ruthy@supportthedeafpeople.co.uk)

### Bounce Back Solution (Shield)

V-19 Shield – it is reusable, wraps around for full face protection. Allows people to see your facial expressions. Washable, reusable, easy to sanitise and recyclable. Easy fit, good sizeable – you can cut to fix the length of your face.

Email: [kim.roe@circagroup.co.uk](mailto:kim.roe@circagroup.co.uk)

## Keyboard Shortcuts

While many computer users – desktop or laptop – spend most of their time using either a mouse or touch pad, the facilities designed for touch typists can be a real boon once mastered – just a couple of keys presses does the same as moving your pointer and clicking on a menu item before selecting your target operation.

The following are a few of those Windows shortcuts that your editor finds a real time-saver. Apple users replace Ctrl with Command key ⌘

1. **Ctrl-P** Hold the Control (Ctrl) key down while tapping the P key immediately opens your printer's dialogue box.
2. **Ctrl-A** As above, hold down the Ctrl key while tapping the A-key is a quick way of marking all of the text in a document – no matter how many pages!



**K9 Cuts By Julie**



*66 Broad Gores, Clarborough, DN22 9JX Tel: 07795 116731*

Fully insured and qualified Certified Advanced Professional Groomer (CAPG)

One to One grooming personalised to suit your requirements

**Full Grooms / Bath and Blow Dry / Puppy Introductions / Pawdicure  
Nail Clipping (including small animals) / 20% Discount for service dogs  
Emmi-Pet Teeth Cleaning**



Find us on Facebook and Instagram



@K9CutsByJulie



@K9CutsByJulie



## Why are many Retford streets called 'gate'?

The answer is generally fairly simple, originating from the Norse word "gata" (pronounced 'garter') for "a road or way". It can, therefore, be traced back the 4<sup>th</sup>-6<sup>th</sup> centuries when these North-Germanic people, now commonly called Scandinavians, or, in medieval times, Norsemen, invaded and settled in Eastern England.

There could be one or two exceptions to this rule as "gate" can also stem from the modern, literal, meaning of a moveable barrier across a gap. When turnpike highways were introduced in the 18<sup>th</sup> century, toll-gates were set up on the roads adding another layer to these 'gate' names. Clarborough was on one such turnpike linking Moorgate with the River Trent crossing at Gainsborough.

**Bridgegate** - Earliest mention found as far back as 1340 (spelt 'Briggate'). Scandinavian in origin, suggesting at a very early date a bridge had been erected to span the ford that gives Retford its name. Piercy tells us that in 1792 the bridge was in such a weakened state that it had to be taken down and the present one built.



**Carolgate** - the name comes from "Karlage", the Karls' lane or road. A Karl or Carl was a freeman, a Dane or Scandinavian, most probably a soldier, given land for settlement. Karlage probably originally ran through the outlying marshy land on which the Karls had been settled. In its early days as a town street Carolgate ended near the corner of Exchange Street and became a lane which forked at the Anchor Inn corner where it bore left down Thrumpton Lane (until the canal was dug), the fork becoming Farmers Lane which ran along the edge of Far Common to Whitehouses.

**Moorgate** - The name comes from "Mor", an Anglo-Saxon word meaning 'a marsh'. The word has narrowed its connotation, but its original meaning survives in the word "morass". Across Moorgate runs the brook from Grove, commonly called the Beck, which divides the parish of East Retford from Clarborough. This brook used to flood annually. The soil here is largely clay, and Moorgate was well called the "morgata" - the miry street.

Editor

## Clarborough School Log Book VE75

With the extensive plans in place by Clarborough & Welham Parish Council combined with Hayton Parish Council for VE75 Commemorations in early May cancelled due to Covid-19 it seems appropriate to look back to 1945 here.

When Clarborough Primary School was preparing to move into its new building in 2008 your editor had the opportunity to make extracts from the school's historical Log Books with permission from Nottinghamshire County Council via their Archives service (ref.:MSD/JS/101/1/3/08-2817).

Shown below are a few of the entries from those Log Books around the time of the end of World War 2 in Europe – these are literal transcripts from the Log Books with the exception of the note in red.

**22 Jan 1945** Attendance very low owing to severity of weather: Morning and afternoon 27 out of a possible 35.

**30 Jan 1945** Heavy snowstorm wrecked the attendance today – 11 scholars only were present in the morning and 14 in the afternoon. Registers were not marked.

**4 May 1945** Received instructions regarding closures for VE Day.

**8 May 1945** VE Day – The school closed for 2 days – Reassembled on the 10<sup>th</sup>. Victory celebrations were held in the Institute on May 8<sup>th</sup>. Tea and games for children from 4 till 6.45. Thanksgiving Service at 7pm – Whist Drive & Dance at night and a Bon-fire about midnight.

**15<sup>th</sup> August 1945** *VJ Day School was already closed for summer holidays*

**14 Jan 1946** The thermometer only registered 36°F this morning in the classroom. We had dancing to get warm.

**11 Apr 1946** School closes to-day until April 30<sup>th</sup> for Easter Holidays.

**30 Apr 1946** School reopens to-day, 8 children absent with mumps.

**6 Feb 1947** Snow falling. One tin of milk was to-day taken from the emergency stock to supplement school dinners. The B.Restaurant sent 1 tin of milk instead of custard to eat with stewed prunes, This was not enough to go round and the supply of potatoes had made only a meager helping each.

**26 Feb 1947** School was closed today as a snow blizzard stopped all transport. School lane had drifts waist high.

These notes provide an illuminating insight into local life 75 years ago. For example, compare the school role with our current 130+. It is also worth noting the entry for 4<sup>th</sup> May, 1945 – VE-Day was clearly on-the-cards for a while.

Editor

## More Keyboard Shortcuts

- If you've used Ctrl-A as above, the next set of actions can be really useful. **Ctrl-C** is copy, **Ctrl-V** is paste and **Ctrl-X** is delete. **Ctrl-F** is 'find' which is invaluable for finding words in word processors or on web pages.
  - When moving (say) pictures or frames around on a word processor document, simply dragging it can be too crude, making it jump positions. If the object is highlighted (has green 'handles' showing) then holding down the Alt key while tapping any of the four arrow keys at lower right of your keyboard nudges the object in tiny steps. Used extensively to position such objects in this Newsletter!
- Do remember the use of the Command key in Apple systems. These shortcuts also work in Ubuntu Linux systems.

## Hiroshima & Nagasaki

The final phase of World War 2 – the defeat of Imperial Japan – was becoming devastatingly destructive, particularly for the Japanese, but also in terms of casualties, for the Allies – mainly the US.

As US forces (along with Allies) progressively claimed Pacific bases from Japanese control, Japanese 'home' islands came within reach of large scale but ineffective high altitude precision bomber attacks. From early 1945 the US Army Air Force (USAAF) changed tactics to one of low level wide area incendiary raids. Coupled with Japan's largely wooden infrastructure, these raids proved devastating. Operating *Meetinghouse*, the raid on Tokyo of 9<sup>th</sup>-10<sup>th</sup> March 1945 killed an estimated 100,000 and devastated some 16 square miles.

Notwithstanding such devastation which progressively destroyed many of Japan's major industrial centres, no signs of surrender surfaced. To the Allies it looked as though the war would be a 'fight to the death' as far as Japan was concerned.

Nuclear fission, the process by which extremely large atomic nuclei could be split, releasing huge amounts of energy was discovered by Otto Hahn and Fritz Strassmann in Germany in 1938. The outbreak of World War 2 came soon afterwards and with it the emigration of many key scientist. In 1939 a key letter was drafted by Leó Szilárd and signed by Albert Einstein and sent to US President Franklin D. Roosevelt warning that Nazi Germany might develop a nuclear weapon.

In due course the US's *Manhattan Project* combined US, British and Canadian researches into one with the aim of producing a bomb before Germany did. In reality the German interests evaporated under the pressures of war but progress on the allies side steadily progressed.

By Spring 1945 the first explosive device had been assembled. It was decided that a test explosion must take place to ensure that future use of the weapon could be predicted. On 16<sup>th</sup> July the test, called *Trinity*, took place with an energy equivalent to 20,000 tons of TNT; the shock wave was heard over 100 miles away!

The Trinity test confirmed the new weapon's devastating potential and the July 26<sup>th</sup> *Potsdam Declaration*, although not mentioning the Trinity Test, unequivocally demanded the unconditional surrender of Japan or "the inevitable and complete destruction of the Japanese armed forces and just as inevitably the utter devastation of the Japanese homeland". Japan did not respond!

Thus, plans continued with the result that the first bomb, code named *Little Boy*, exploded over Hiroshima at about 08:10 local time on 6<sup>th</sup> August, 1945, immediately killing some 30% of the city's population (70-80,000).

US President Truman announced the use of the weapon and warned Japan that more could follow if they did not surrender – again, no response.

Just after 11:00 (local time) on 9<sup>th</sup> August, 1945 a second bomb (*Fat Boy*) was exploded over Nagasaki.

Following this, intense internal discussions continued until Emperor Hirohito broadcast his surrender to the nation on 15<sup>th</sup> August. The Allies celebrated **VJ-Day**.

club energy fitness

Retford's Friendliest Gym

NO JOINING FEE

01777 711 551  
www.club-energy-retford.co.uk

@clubenergyretford

Ladies ZONE  
Performance ZONE  
Boxing ZONE  
Studio ZONE  
Cardio ZONE  
Strength ZONE



### FREE TO MEMBERS;

- A huge timetable of live and virtual classes including Pound, Boogie Bounce and Kettlecise
- Personalised exercise prescription
- Fully Air Conditioned
- Saunas in both changing rooms

### NEW extended opening hours!

Mon - Thurs  
06:00 - 21:00

Fri  
06:00 - 20:00

Sat + Sun  
08:00 - 16:00

Bank Hol  
08:00 - 12:00



### CALL US TO JOIN

OR CLAIM YOUR FREE 3 DAY PASS

**01777 711551**

Mallard House, Westfield Road,  
Retford, DN22 7BT

@clubenergyretford

www.club-energy-retford.co.uk

12 Months Membership



## Retford Heritage Open Day

Retford Heritage Open day celebrates the 400<sup>th</sup> anniversary of the Mayflower Pilgrims with the theme of 'Journeys' with a programme through 12<sup>th</sup>-19<sup>th</sup> September. No booking required.

Bassetlaw Museum, Retford Civic Society, Retford Business Forum and other local organisations will be working in partnership with North Notts Lit Fest to create new and innovative ways to access Retford's heritage. Join our online event for a variety of activities such as virtual tours, competitions, podcasts and more!

The theme of 'journeys' will weave together a fabulous program of online content. Find out fascinating facts about some of Retford's beautiful heritage sites, take a relaxing virtual trip along the Chesterfield canal, enjoy the peal of church bells and live Facebook events all within current social distancing guidelines!

The event will be hosted on the Retford Heritage Open day Facebook page, with links to YouTube videos and downloadable activities.

'Like' our page on Facebook, 'Retford Heritage Open Day' to be able to access all the events!



### Additional Information

Contact for the day: Bassetlaw Museum, 01777 713 749  
[www.facebook.com/RetfordHeritageOpenDay](https://www.facebook.com/RetfordHeritageOpenDay)  
[www.facebook.com/nnlitfest](https://www.facebook.com/nnlitfest)

## The Hub, Retford reopens

We are delighted to announce that The Hub will re-open on Thursday 2 July, and, depending on volunteer availability, it will be open from 10am till 4.00 pm on Thursdays, Fridays and Saturdays every week.

The safety of our customers and volunteers will be our priority. The deli/café area, the museum, gallery and toilets will, sadly, not be open, and only 2 customers will be allowed in at any one time. Hand-sanitiser will be provided, and we ask that items not be touched unless a purchase is to be made.

There will be a range of items for sale: handmade crafts and foods such as local honey, eggs, and flour from Tuxford Windmill, and books and souvenirs, as well as most of the other things that we usually stock.

Please visit [retfordhub.myshopify.com](https://retfordhub.myshopify.com) for our new online website, and / or come to the shop. We look forward to seeing you.

## Idle Valley Nature Reserve

Local photographer Mike Vickers of Lound has captured a series of stunning wildlife images at Idle Valley Nature Reserve during lockdown including, crane, great white

egret, turtle dove and brown hare. Mike, a Volunteer Warden for Nottinghamshire Wildlife Trust, has been visiting even more regularly during lockdown and said: *"The extra free time during lockdown has enabled me to indulge in my passion for nature photography and reinforced my view that nature and local nature reserves are vitally important. I'm lucky that the reserve is only a few minutes from home but it's been rewarding to see so many people enjoying the reserve and its wildlife over the past few months."*

Nottinghamshire Wildlife Trust's Erin McDaid said:

"Mike's photos capture the essence of the site - it's one of the best sites in Nottinghamshire for watching birds and other wildlife and variety of Mike's photos underline that. We hope Mike's images inspire many others to visit the reserve."



The Wildlife Trust, a locally run charity, has faced a challenging time during lockdown with income from car parking, catering and events limited and the majority of its staff Furloughed to protect funding and jobs. The charity made an early decision to keep its nature reserves open to provide people with spaces to exercise and connect with nature during lockdown and whilst the Idle Valley car park off North Road and the café and toilet facilities remain closed, the reserve is open for walkers and wildlife watchers with many access points across the huge 450-hectare site. The Trust is making plans to reopen the other facilities as soon as practicable. The centre will also host a major lockdown inspired Postcard Show later in the year featuring hundreds of designs from across the UK as well as many international submissions.

Erin added: "Whilst we've not been able to welcome visitors in the usual way in recent months we're delighted that thousands of people like Mike have continued to enjoy our nature reserves. Mike's images are evidence of why the sites are so important and why we all need to work to protect them and to create a Wilder Nottinghamshire for both people and nature." A gallery of Mike's recent images as well as other updates can be found at :

[www.facebook.com/IdleValleyNatureReserve](https://www.facebook.com/IdleValleyNatureReserve)

### The need for seed!

We are delighted to confirm our Trading team is now **personally delivering** online bird feed purchases to postcodes **NG19-NG25 & DN22**, in addition to NG1-NG18.

To make this offer as effective as possible on behalf of our feathered friends, there is a minimum order of £20 on seed mixes & straights and starter sets. You can top up to £20 with whatever you like from

the shop! Pop to our shop to start browsing and place your order. [www.nottinghamshirewildlife.org/shop](https://www.nottinghamshirewildlife.org/shop)



# STIHL®

## AVAILABLE NOW

Ripon Farm Services are authorised dealers of Stihl products and we now have the full Stihl range available at our branch in Clarborough.

The STIHL name has stood for revolutionary technology and innovative ideas ever since the firm was founded. Throughout their 90-plus year history that has made them THE name for state-of-the-art engineering.



In addition to the full range of petrol powered garden machinery, Stihl also now offer their powerful Lithium-Ion cordless range too.  
**Please enquire in branch or by phone for more information.**



**RIPON**  
farm services

FOR NOW.  
AND THE FUTURE

Clarborough Hill, Clarborough, Retford, DN22 9EA  
Tel: 01777 704823 [www.riponfarmservices.com](http://www.riponfarmservices.com)



## Chesterfield Canal Trust

Like everyone else, we have had a frustrating list of cancellations, including our Festival and our Walking Festival. In theory the latter could have gone ahead, but a bunch of people in masks walking two metres apart is not what we think of as a Walking Festival, plus of course many of our walkers and walk leaders are in vulnerable groups, so might be very wary of stepping out.

We have not been able to run any boat trips. Twelve people inside a narrowboat cabin is not exactly conducive to social distancing. At the time of writing, we are investigating the possibility of running charters with family groups. We still hope to be able to run our incredibly popular Santa Specials, but please don't hold your breath.

Our tripboat Seth Ellis has had to move from its long time mooring at the Hop Pole pub in Retford. It has been at the Retford & Worksop Boat Club for many months, but will



soon be moving to its new permanent mooring at the Chequers Inn at Ranby.

All is not doom and gloom however. Waterways World, the leading national canal magazine, carried a wonderful four page report about our canal in its July issue that was highly complimentary.

The Trust has just submitted a planning application to restore 1.6 miles in Chesterfield. We are also hoping to start on an adjoining section in Renishaw this autumn. This should have started in May. Altogether this will add 2½ miles to the canal. You might wonder what this has to do with Clarborough & Welham. The answer is very simple. A fully restored canal will bring more boats and create more interest in the whole canal, including those sections that have been in water since 1777. The Trust is striving to get the restoration finished by 2027, which will be the 250th Anniversary of its opening.

Our website is full of information about the canal, trips etc. Just search for Chesterfield Canal Trust. We have started putting some old photos on it, such as the White Hart Inn which is now the Retford & Worksop Boat Club.

A boat called Perseverance arrived on our canal towards the end of March, intending to spend a couple of weeks here. However lockdown meant that it ended up staying for three months. The crew do regular reports (vlogs) on

YouTube. These are hugely popular with over ten thousand views of each one. You can see them by searching for Minimal List.

Rod Auton



## Black Lives Matter Protest

**The strength of feeling following the death of George Floyd is understandable and I am grateful to the vast majority of people who attended the Black Lives Matter protest (on 7<sup>th</sup> June) at Nottingham's Forest Recreation Ground in a peaceful and dignified manner.**

People want to make their voices heard. The right to lawful protest is a key part of any democracy, which UK police uphold and facilitate. Nottinghamshire Police attended the event to both uphold and facilitate and to help keep people safe from the continuing threat of coronavirus.

Both the Chief Constable and I are horrified and appalled by the footage that emerged from the US of the death of George Floyd at the hands of US police officers. Accountability and justice must surely follow.

It's reassuring that in this country, we believe in 'policing by consent' and the police work to deliver this type of service, day in day out.

I'm particularly proud that in Nottinghamshire we have made good progress in increasing the diversity of our police officers. In 2018 we had 92 officers from a BAME background. Today this figure has risen to 120 with more to come this year. In addition, we are attracting BAME officers from other forces and we have two Superintendents, 9 Inspectors and 15 Sergeants from BAME background.

Stop and search has increased significantly both nationally and in Nottinghamshire, but I'm pleased that our positive outcome rate is above any elsewhere in the country, showing that the force continues to make targeted and intelligence-led searches. But there is more to do which is why I am working to set up an on-going Community Listening Group and Independent Community Scrutiny Panel to ensure that we are listening to the views of our BAME communities.

**Paddy Tipping**

**Nottinghamshire Police & Crime Commissioner**

Above is an extract from Paddy's June newsletter, *The Beat*, which can be read in full on his website at: <https://www.nottinghamshire.pcc.police.uk> or, alternatively, from our community website; just follow **Law & Order ► Police & Crime Commissioner** and then click on **THE BEAT** poster.

**Editor**

## What are Post-16 T-level courses?

T Levels are new courses coming in September 2020, which will follow GCSEs and will be equivalent to 3 A Levels. These 2-year courses have been developed in collaboration with employers and businesses so that the content meets the needs of industry and prepares students for work.

T Levels will offer students a mixture of classroom learning and 'on-the-job' experience during an industry placement of at least 315 hours (approximately 45 days). They will provide the knowledge and experience needed to open the door into skilled employment, further study or a higher apprenticeship.

Students will be able to take a T Level in the following subject areas:

- accountancy
- agriculture, land management and production
- animal care and management
- **building services engineering**
- catering
- craft and design
- cultural heritage and visitor attractions
- design and development
- **design, surveying and planning**
- **digital business services**
- **digital production, design and development**
- **digital support and services**
- **education**
- financial
- hair, beauty and aesthetics
- **health**
- **healthcare science**
- human resources
- legal
- maintenance, installation and repair
- management and administration
- manufacturing, processing and control
- media, broadcast and production
- **on-site construction**
- **science**

### When they will start

The first 3 T Levels will be available at selected colleges, schools and other providers across England in September 2020. This means pupils who entered year 10 in September 2018 will be the first to be able to study them.

**The nearest provider will be Doncaster College & University Centre (DN1 2RF) which will be providing those courses highlighted in the above list from September, 2021.**

### How T Levels will work with other qualifications

T Levels will become one of the main choices for students after GCSE alongside:

- apprenticeships for students who wish to learn a specific occupation 'on the job'
- A levels for students who wish to continue academic education.

We are currently reviewing post-GCSE qualifications to create a simpler, high-quality system that students, parents and employers will all understand.

T Levels will be based on the same standards as apprenticeships, designed by employers and approved by the Institute for Apprenticeships and Technical Education (the Institute). We expect the total time for a T Level to be around 1,800 hours over the 2 years, including the industry placement. This is a significant increase on most current technical education courses.

This differs from an apprenticeship, which is typically 80% on-the-job and 20% in the classroom and is more suited to those who know what occupation they want to pursue, want to earn a wage and learn at the same time and are ready to enter the workforce at age 16.

<https://www.gov.uk/government/publications/introduction-of-t-levels/introduction-of-t-levels>

## Battle of Britain radar

A key part of Lord Dowding's (Commander-in-Chief of RAF Fighter Command) preparation for the Battle, besides pushing development of Hurricane and Spitfire, was his drive to develop and deploy Radar (radio detecting and ranging).

This technology, offered complete coverage of the east and south coasts of England (Chain Home/CH) and even low-level coverage (CHL). Combined with a well developed Observer Corps and central command from Bentley Priory (Harrow district) this allowed the resources of pilots and fighters to target incoming Luftwaffe attacks.

Interestingly, at the time the Luftwaffe high command didn't realise radar's values and they only managed to disable one site (Isle of Wight) for any significant time.

Editor

## Goacher's Farm Shop

Wood Lane, North Wheatley



The only traditionally grown Wheatley fruit.



Picked and PYO  
**Strawberries, Raspberries, Cherries,  
Plums, Apples, Pears etc**

Taste the difference!  
Fresh and frozen

Also available;  
**Asparagus, Turkeys, Honey, Jams,  
Chutneys, Potatoes, Vegetables, Eggs,  
Juices and Home baking**

**Now serving hot drinks**

For opening times please

Phone; **01427 880 341**

or **www.goforgoachers.co.uk**



## Wildlife under threat

Nowhere exemplifies the conflict between rising human populations and local wildlife than the image below.

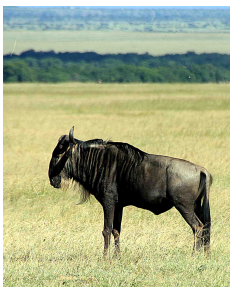


Taken a few years ago in Kenya's Maasai Mara, the herd in the distance belongs to one of the expanding settlements bordering the National Reserve.

The Maasai Mara National Reserve in south-west Kenya is contiguous with the larger Serengeti National Park in Tanzania. Both are largely savannah landscapes and home to the indigenous Maasai people. Their semi-nomadic lifestyle based around grazing livestock means that there is a constant tension between them and preservation of the National Reserves since their herds sometimes stray into reserve territory and animals from the reserve sometimes invade local communities.



The shot above was taken within the Reserve and shows a lioness feeding on the remains of a Cape Buffalo. Earlier we had come across Brown Hyenas grouped around this carcass but when this lioness approached they retreated – but kept a 'watching brief'. The Hyena shown above was apparently the leader of the pack and slowly approached the kill again. The lioness didn't seem to notice – or care – so within a few more minutes both were feeding almost nose-to-nose!



[Left] The Maasai Mara Reserve's major inhabitants are wildebeest, the population of which runs into millions. Their numbers provide the basis for

the major predators' food chains.

[Right] Lioness 'keeping an eye on things' as we pass by assisted by {below} a leopard.



How Covid-19 pandemic will affect Kenya and its Game parks, which are a major source of foreign currency is yet to become clear.

Two crucial industries bringing money in to support wildlife

conservation are ecotourism and legal trophy hunting.

Such income supports rangers to protect endangered species from poachers and support researchers and the wider conservation efforts aiming to encourage co-existence of human and animal populations. It also means that such species are less valuable when they are alive. There are also worries that families who have lost their incomes may resort of bushmeat hunting to support their families.

Whilst at the time of writing, no cases of Covid-19 had been reported from the Maasai people, Kenyan national strategies to prevent its spread have made dramatic changes to traditional Maasai life - ordinarily, within the community, access to health services, clean water, let alone soap, sanitizers, and masks is constrained to say the least. Add to that a lifestyle that is based on group living and the risks are obvious.

Editor

***"In a gentle way, you can shake the world."***

*Mahatma Gandhi (1869-1948)*





## Google it!

Back in our Winter 2018 issue we explored Google's Translate tools for both reading and writing material in foreign languages. In this article we will explore a few of Google's other really useful tools.

**a. As a calculator.** Simply type your sum into Google's usual search bar and tap the Enter key. You will get the answer displayed above a calculator that has some pretty powerful facilities too. The only thing you need to remember is that Google, along with most online tools, uses the \* symbol for 'multiply' rather than the lower case 'x'. Thus "6 times 7" would be written 6\*7. The other symbols (+, - and /) have their usual meanings of add, subtract and divide.

**b. As a converter.** Simply type your question such as "12 miles in km" or "8 inches in cm".

**c. Become an instant expert!** The number of people using Google on a daily basis runs into billions. If you are having problems with an appliance or device it is likely that many others will have met the same issues – and a few of them will have written their solutions online. All you need to do is carry out a sensibly worded search. This is where a bit of familiarity with **effective Google searching** comes in. This topic often appears in Clarborough & Welham IT Group lessons that resume in Clarborough Village Hall once Covid-19 circumstances allow. Briefly, key aspects of such searches include:

- Don't type a question such as "how far is it from Retford to Worksop?" just type "Retford Worksop distance"
- Use the tabs at the top of each Google search page. These usually have (left-right) *All, Images, Videos, News...* or similar. Click on these to shows particular type info.
- Use a hyphen (-) to exclude words. For example, "mustang -car" will exclude any 'hit' that has 'car' in it.
- Use the asterisk symbol (\*) as a 'wildcard'. If used as part of a search this finds all 'hits' with any number of letters replacing the asterisk. A simple example is a common family history option, entering "ann\*" when searching for a name will return all hits for Ann, Anne, Annette, Annabel, etc.

These are just a few of the wide range of techniques that make Google a really powerful search tool. Experiment!

Editor

## End of support for Microsoft Office 2010

**Support for Office 2010 will end on October 13<sup>th</sup>, 2020** and there will be no extension and no extended security updates. All of your Office 2010 apps will continue to function. However, you could expose yourself to serious and potentially harmful security risks.

Here's what the end of support means for you after October 13<sup>th</sup>, 2020:

- Microsoft will no longer provide technical support, bug fixes, or security fixes for Office 2010 vulnerabilities which may be subsequently reported or discovered.
- You'll no longer receive Office 2010 software updates.
- You'll no longer receive phone or chat technical
- No further updates to support content will be provided and most online help content will be retired.
- You'll no longer be able to download Office 2010.

**Editor's note:** I stopped using Microsoft Office many years ago and switched to the open-source Apache OpenOffice which I still use to produce this Newsletter. More recently I've also started to use the compatible LibreOffice. Both of these open-source applications are completely free! Much of the content of our Newsletters arrive in Microsoft Office formats but this is not an issue with OpenOffice or LibreOffice which both can read Microsoft files.

Editor

***"I realise that patriotism is not enough. I must have no hatred or bitterness towards anyone."***

*Edith Cavell (1865-1915) Last words*

## ReNew

### Carpet & Upholstery Cleaning



**Please Call Mob: 0755 000 2242**  
**Tel: 0177 770 2779**

*"The bitterness of poor quality service lingers long after the sweetness of price is forgotten"*



*Battle of Britain Memorial Flight © Greg Herdman 2015*  
*L-r: Hurricane, Lancaster and Spitfire*



## Aurora Wellbeing Centre Bassetlaw

The Aurora Centre, your local cancer charity in the Old Library Building,



Workshop has the following services available in the Centre. These have been trying times for all of us but particularly for those who have had the added worry and stress of being diagnosed with cancer or having treatment during this period.

### Aurora Services

Aurora continues to offer telephone-based support and services to people and their families affected

by cancer or long term health conditions whilst the centre remains closed and we continue to share information and advice and arrange counselling and bereavement support. Our support groups have moved online, along with Aurora courses and exercise classes. Right now, it is our priority to stay in touch with clients, volunteers and many friends of the charity. We are continuing to offer support and a friendly listening ear to anyone who may be struggling with feelings of anxiety, loneliness or depression and encourage you to chat about your concerns.

### Pre-Loved Charity Shop

Our Pre-loved Charity Shop is now open Monday to Friday 10:00 – 14:00 and donations are welcome. We have a fantastic selection of quality clothes, children's toys and a second hand books. Our volunteers have been busy making hand-crafted quality re-usable facemasks, which are washable with an internal breathable filter material and are available to buy or order from our shop.

### Valerie's Tearooms

We are currently operating a take away service from Valerie's Tearooms where you can purchase a hot drink, slice of cake or light refreshments, as well as a competitive Meal Deal. We are lucky to be situated in the delightful Memorial Gardens so come along and enjoy the gardens at the same time.

### Beauty Therapy

From August we will be able to offer a limited range of beauty treatments. Initially, these will be nail treatments, manicures, pedicures and back massages adhering to government guidelines and using all necessary PPE. For further information, prices or to make a booking please phone 01909 470 985.

### Heritage and Health Project

The centre might have been closed but we have been busy working behind the scenes. The Old Library Building is set to be transformed to its former glory thanks to a £1.56m National Lottery Heritage Fund grant. We will begin work very soon on an ambitious plan to regenerate this key historic Grade II listed building.

The project will create a dedicated heritage area including physical displays and an innovative virtual museum to tell the story of the Old Library and Museum throughout the decades. Aurora's aim is to engage people living with cancer and their families with heritage to support their wellbeing. This includes an innovative new activities programme, giving people an opportunity to connect with the history of Worksop. Keep up to date with the latest activities, visit

<https://www.aurorawellbeing.org.uk/worksop/heritage-health/>

### Support Local

If you would like to donate to Aurora to support local people in Bassetlaw diagnosed with cancer, please follow the link :

<https://localgiving.org/charity/aurorawellbeingcentres/AuroraWellbeingCentreBassetlaw>

Telephone service is open Monday to Friday, 10:00 to 16:00 on 01909 470 985 or email :

[admin@aurorawellbeing.org.uk](mailto:admin@aurorawellbeing.org.uk)

TWITTER @AuroraCentres

FACEBOOK @AuroraWellbeingCentreBassetlaw

Website & Newsletter :

[www.aurorawellbeing.org.uk/worksop](http://www.aurorawellbeing.org.uk/worksop)

## Latest news – community website

Here we highlight a few more news items from our community website's home page:

**Notts County Council's** Guidance for employees, the self-employed, employers and businesses.

**Staying safe online** during this emergency, particularly when working from home.



**Thursdays @ 9.30am at Clarlborough Village Hall**

A FUN full-body workout, using slightly weighted drumsticks, that combines cardio, conditioning & strength training with yoga & pilates inspired movements.

Contact Charlotte on 07817654782 or visit "POUND with Charlotte" on Facebook

## VE75+1 or VE76?

Very sadly the Coronavirus 'lockdown' covered the weekend when we should have been celebrating the 75<sup>th</sup> Anniversary of the end of World War 2 in Europe.

This followed 10 months of hard work by a dedicated organising group of residents from Clarborough, Welham and Hayton.

The organising group did, however, put forward an alternative type of commemoration of the event by suggesting we all hold an 'Afternoon Tea' in our gardens. The stunning weather aided this and there were many examples of street areas 'getting together' - at social distance of course - to commemorate the event. As we had asked, the playing of the 'Last Post' and 'Battle's O'er' could be heard across the villages at 15:00 on 8<sup>th</sup> May. Very moving! Some of these events carried on well into the evening - one, at least, not ending until 22:00.

Specially commissioned flags were flown in both Hayton and Clarborough.

The Organising Group had already spent a considerable amount of money in preparation for the event but we are determined that this should not be wasted, nor the ideas lost. This will not be the case as it is planned that there will be events held on 8<sup>th</sup> & 9<sup>th</sup> May 2021. Whether we call this VE76 or VE75+1 is still to be decided. There will have to be adjustment in the events and timings planned for this year as only 2 days will be available in 2021 rather than the 3 days planned for 2020. But we have booked the Piper, Cornetist and Band for events next year. This is all dependent on what rules and regulations are still in force at that time!

Saturday 15<sup>th</sup> August 2020, marks VJ75, the end of the war in Japan and the true end of the Second World War. There is no national celebration of this day but we will be flying the Union Flag in both Clarborough and Hayton to cover this day. Unfortunately there is no flag pole in Welham from which to fly a flag.

***So, get out your 2021 Diary and write in VE76 for those dates - 8 & 9 May 2021! We look forward to seeing you all there!***

Paul Willcock  
Co-ordinator: ClaWeHa VE75



## Fairtrade for Bassetlaw

The committee has reluctantly concluded that the time has come to disband the group. However at a difficult time for many, all over the world, this decision has a positive outcome, as the remaining funds, in excess of £300, are to be donated to a Traidcraft Exchange appeal

to support producers whose orders have dried up during the Covid-19 pandemic.

Fairtrade for Bassetlaw was set up 15 years ago by a couple of committed individuals who went out looking for like-minded people to join them. They attracted support from Traidcraft Fair Traders, church representatives, councillors and others. Much hard work ensued, resulting

in the Fairtrade Foundation awarding Fairtrade District status to Bassetlaw on 16<sup>th</sup> October 2009.

Bassetlaw schools, churches, shops and cafes, businesses, clubs and the Council have all been involved over the years and a programme of activities particularly during Fairtrade Fortnight (every February-March) has kept Fairtrade in the public eye. Highlights have included two members of the group dressing up as Fairtrade bananas, local schools holding events to support and understand Fairtrade, Fairtrade community meals and bake offs, while events in supermarkets have drawn in a supportive audience.

During this period, Fairtrade has acquired a much higher profile, with many more people aware of the need to support the small farmers in developing countries who grow the commodities which we rely upon every day, but are **not** always paid a fair price. All the major supermarkets now stock a range of Fairtrade products and many catering outlets use these routinely.

The current Fairtrade for Bassetlaw committee has been unable to recruit fresh blood, partly perhaps because many people now view Fairtrade as well-established, and now feel the time has come to close down the organisation, which will cease to exist on 31<sup>st</sup> July 2020.

But this does not mean Fairtrade has ceased to exist and we ask you as local residents to keep raising the profile of Fairtrade. This can be as simple as asking the cafe or restaurant you go to if there coffee, tea, sugar is Fairtrade. And if not you tell them how they can access Fairtrade products and offer to promote their cafe. The same applies to schools, your church, local community or business meetings. Make sure the drinks provided are Fairtrade and offer to provide them if not. However much has been achieved during the group's existence, we are optimistic that Fairtrade products will continue to be widely available, both locally and by mail order. Fairtrade for Bassetlaw has a Facebook presence and will continue to highlight local and international issues on it.

<https://www.facebook.com/Fairtrade4Bassetlaw/>

**The donation to Traidcraft Exchange will be the group's final collective action, and one which feels worth celebrating. But be sure Fairtrade will always be important in Bassetlaw and across many countries.**

We hope many will continue to support Fairtrade.

Check out Fairtrade information at the Fairtrade Foundation <http://www.fairtrade.org.uk> and Fairtrade purchases can be ordered online from Traidcraft : <https://www.traidcraftshop.co.uk>

## Do you require any landbased training?

### North Notts Training Group

"Cost effective professional training for a safe and efficient tomorrow"

Health & Safety, Pesticides, Chainsaws, Fork Lifts, First Aid,

Abrasive Wheels, Management, COSHH Employment Law,

Vermin Control, Livestock courses



## Online courses available

Contact: Vicki Wilson

Tel: 07855751689

[vkwilson1@yahoo.co.uk](mailto:vkwilson1@yahoo.co.uk)





## Environmental Enforcement to be Introduced across Bassetlaw District

Bassetlaw District Council is upping its commitment to making our district a cleaner and safer place to live, work and visit by targeting people who deliberately drop litter and fail to clean up after their dog.

The Council will be taking a firmer approach to littering and dog fouling by introducing Environmental Enforcement Officers across the district from August who have the powers to issue Fixed Penalty Notices of up to £100 should they witness people littering or failing to clean up after their dog.

Working in partnership with District Enforcement, a company that specialises in environmental enforcement, Officers will be patrolling the district, initially in the town centres of Worksop, Retford, Harworth and Tuxford, but also across the rest of the district including more rural areas.

Environmental Enforcement Officers will initially look to engage with residents and remind them to put their litter, cigarette butts and dog poo in a bin or take it home with them. They will also enforce offences relating to Public Spaces Protection Orders.

Cllr Julie Leigh, Cabinet Member for Environment at Bassetlaw District Council said: "Littering and dog fouling are some of the most reported issues to councillors and we will be taking a more targeted and proactive approach to tackling these anti-social activities.

"Residents tell us time and again how frustrating it is to see litter, cigarette butts and dog poo out in their communities. Our environment services team and caretakers on housing estates work extremely hard to clean up communities, but a small minority of people continue to drop litter or fail to clean up after their dog. As a consequence, Bassetlaw District Council is introducing proactive enforcement to target this unacceptable behaviour. We want people to take pride in where they live and we are confident that the professional approach of District Enforcement will help to change people's attitudes and behaviour and reduce the amount of litter and dog poo on our streets and in our communities."

Colin Buchanan, Head of Operations at District Enforcement, welcomed the partnership saying, 'District Enforcement is excited to be working in partnership with Bassetlaw District Council and play our part in keeping such a beautiful borough clean and tidy, with our sole ambition to reduce the amount of littering and dog fouling on the streets. We have a dedicated team of officers who will, on a daily basis, patrol the whole borough and take a fair and proportionate approach to the issuance of a fixed penalty notice for any environmental crime offences they witness.

District Enforcement have been given powers by Bassetlaw District Council to issue Fixed Penalty Notices of £100 for littering and dog fouling. Should the FPN not be paid, the offender could face prosecution and a potential fine of up to £2,500.

Environmental Crime Officers receive intensive training and ongoing professional development to maintain high standards.

They will also wear Body Cameras to capture interaction between Officers and members of the public. You can find more information about District Enforcement and the Council's new policy of issuing Fixed Penalty Notices by visiting [www.bassetlaw.gov.uk](http://www.bassetlaw.gov.uk) where you will also find a handy list of Frequently Asked Questions.

[Right] Sedge Warbler backlit  
© Mike Vickers

See Idle Valley article on page 16 for more on Mike Vickers.



### Dates for your Diary

Retford Heritage Day and Literary Festival: 12<sup>th</sup> - 19<sup>th</sup> September, 2020. Note: Bassetlaw Museum's Pilgrims Gallery will be one year old on 19<sup>th</sup> September!  
Retford Pilgrim Festival 2020: 14<sup>th</sup> - 27<sup>th</sup> November.  
Retford Christmas Market & Lights Switch-on: 29<sup>th</sup> November.

**As noted elsewhere, this list was compiled well before the events so please check our community website (see front page) for up-to-date information.**

### Clarborough & Welham Parish Council Meetings

14<sup>th</sup> September  
19<sup>th</sup> October  
30<sup>th</sup> November

**Meetings open 19:00 in Clarborough Village Hall**

Agendas are always posted at least a week in advance on notice boards and on our community website where you will also find approved Minutes and meeting dates through to January, 2021.

### Newsletter Advertising rates (for 4 consecutive issues)

Full page	£125.00
Half page	£75.00
Quarter page	£45.00
This size	£25.00

**Contact Greg (01777) 700 918**

**Special rates for 'one off' insertions  
Yet again, our greatest thanks go to our tireless (!) team of volunteer distributors.**

### Newsletter deadlines

26<sup>th</sup> October (Winter issue)  
18<sup>th</sup> January (Spring 2021 issue)